

# 2009-10 Baldwin County Schools Loxley, AL

June 10, 2010

## Contents

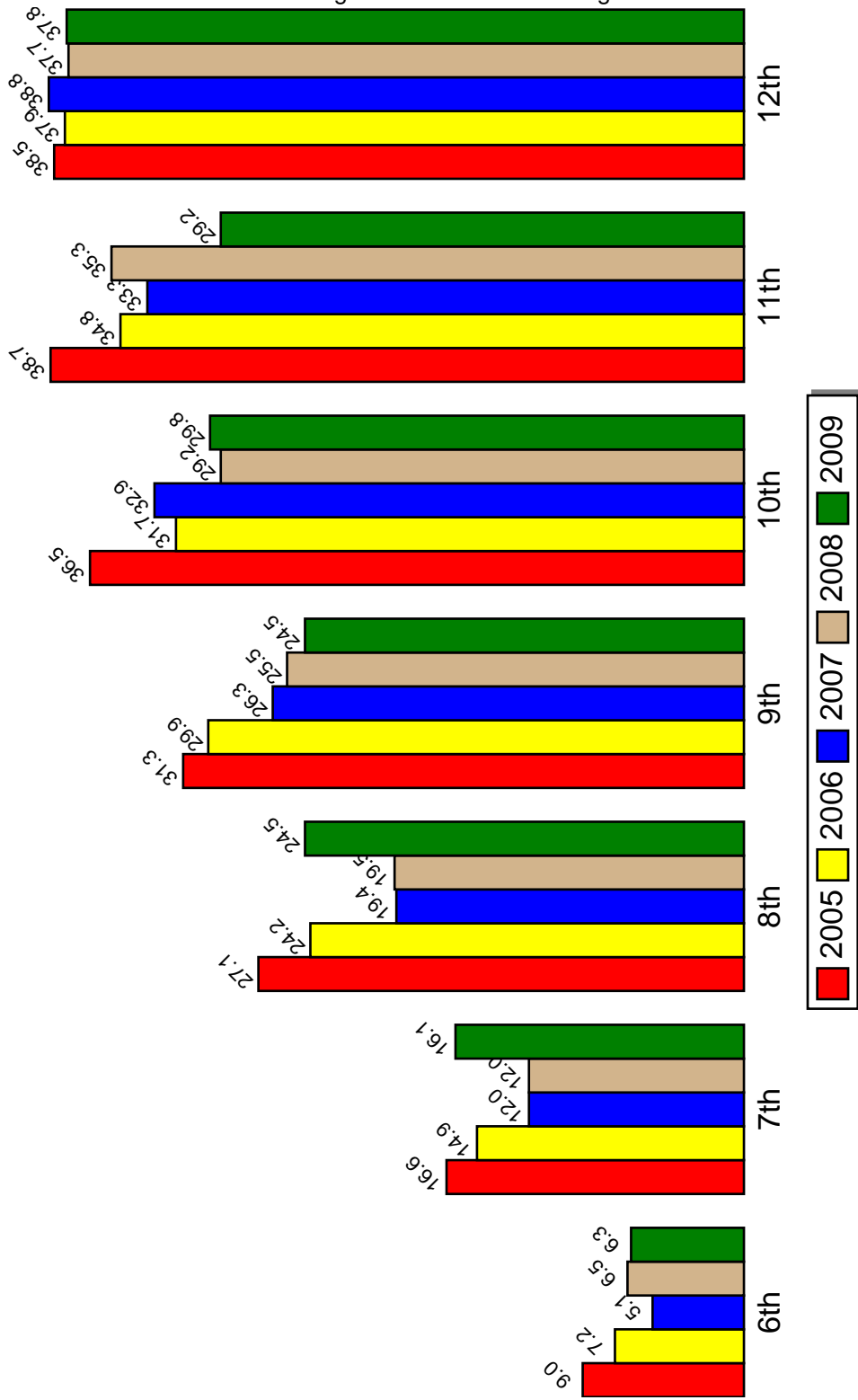
1 Annual & Monthly Frequency of Use Across Years	1
2 Perceived Risk of Use	38
3 Availability Across Years	46

## 1 Annual & Monthly Frequency of Use Across Years

The first set of graphs present data on the frequency of use. For the each drug, there is a chart reporting *Annual Use* (i.e. any use within the past year) and *Monthly Use* (i.e. use at least once per month).

# Annual Use of Cigarettes

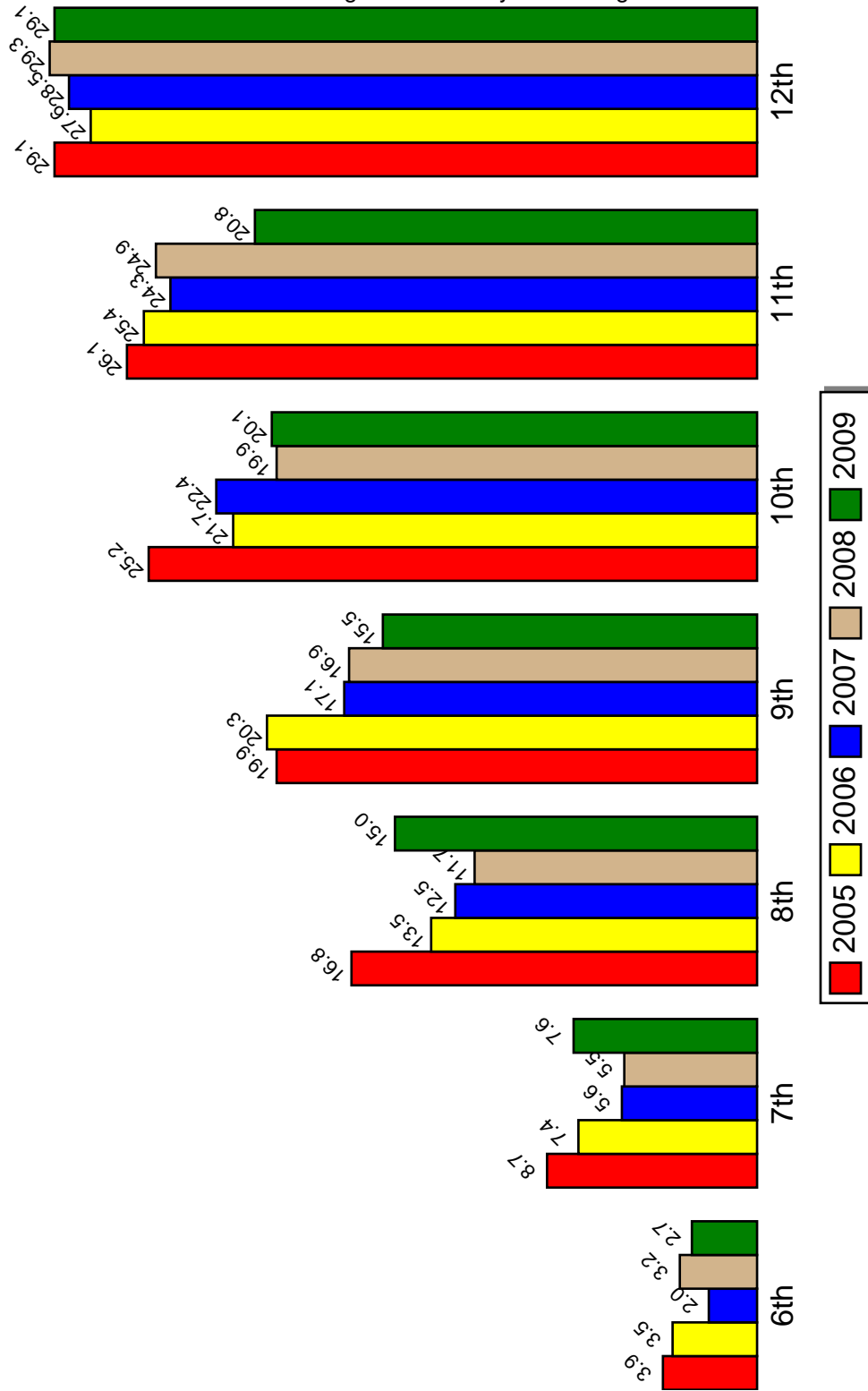
Figure 1: Annual Use of Cigarettes



Source: PRIDE Survey

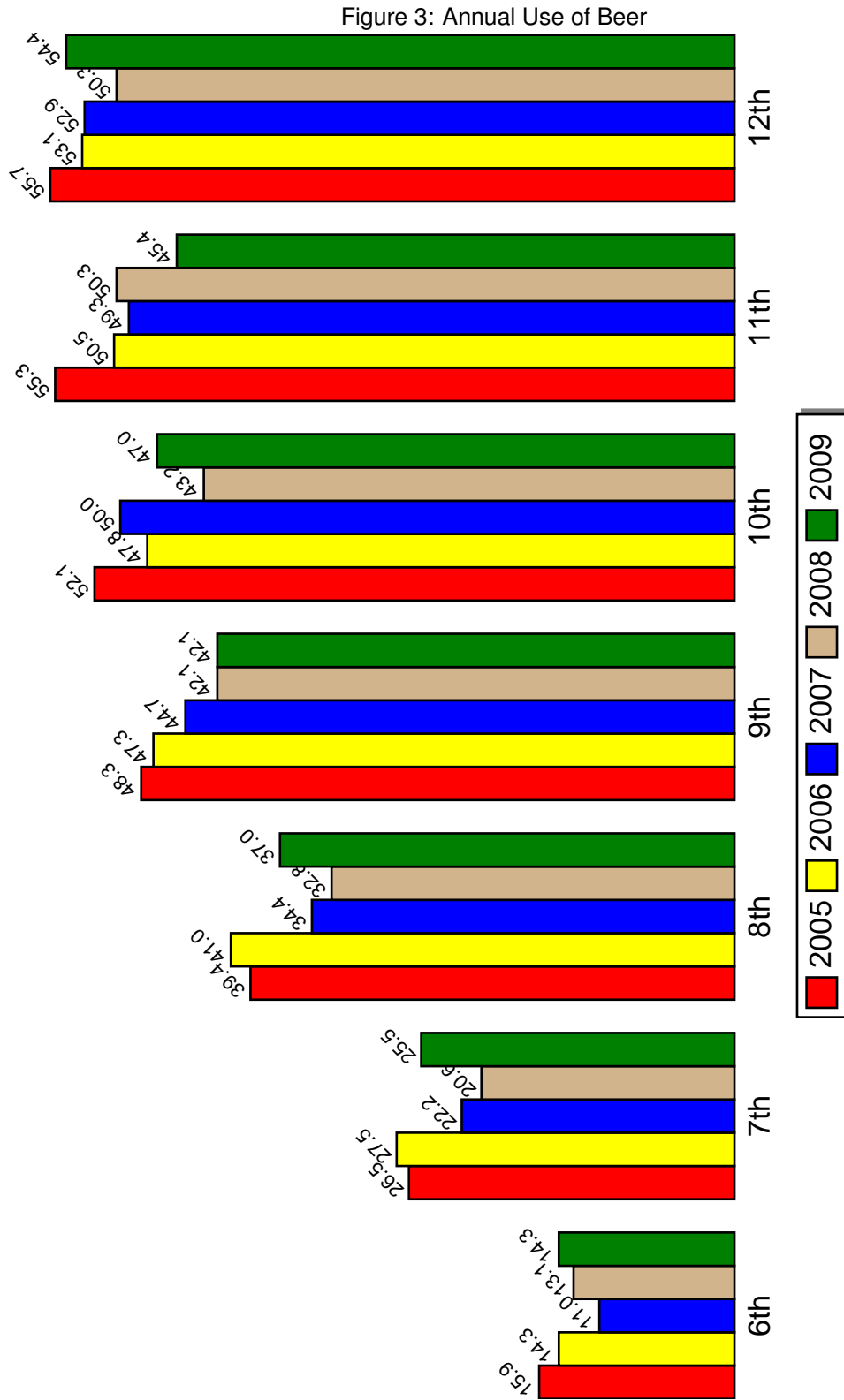
# Monthly Use of Cigarettes

Figure 2: Monthly Use of Cigarettes



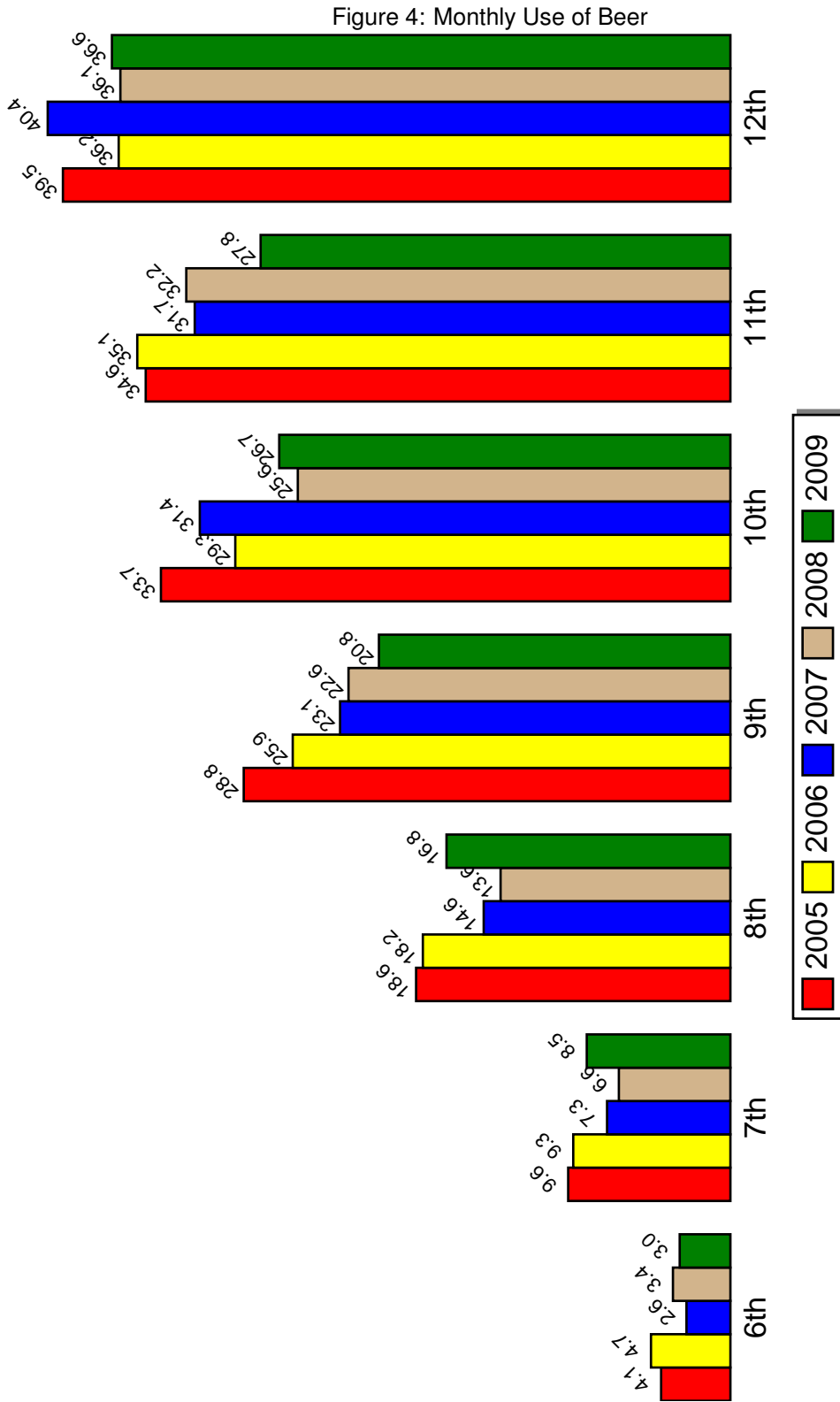
Source: PRIDE Survey

Annual Use of Beer



Source: PRIDE Survey

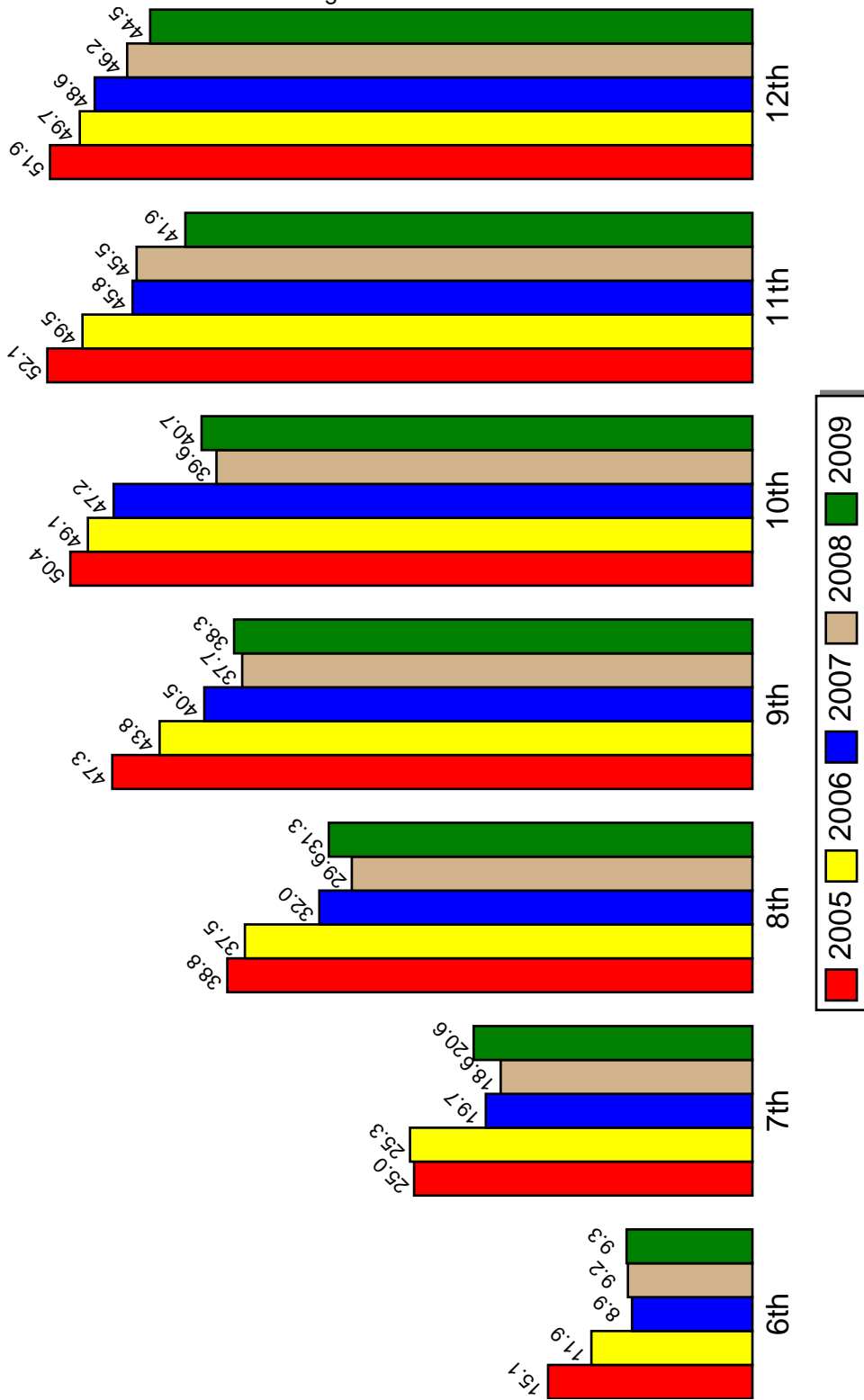
# Monthly Use of Beer



Source: PRIDE Survey

Annual Use of Wine Coolers

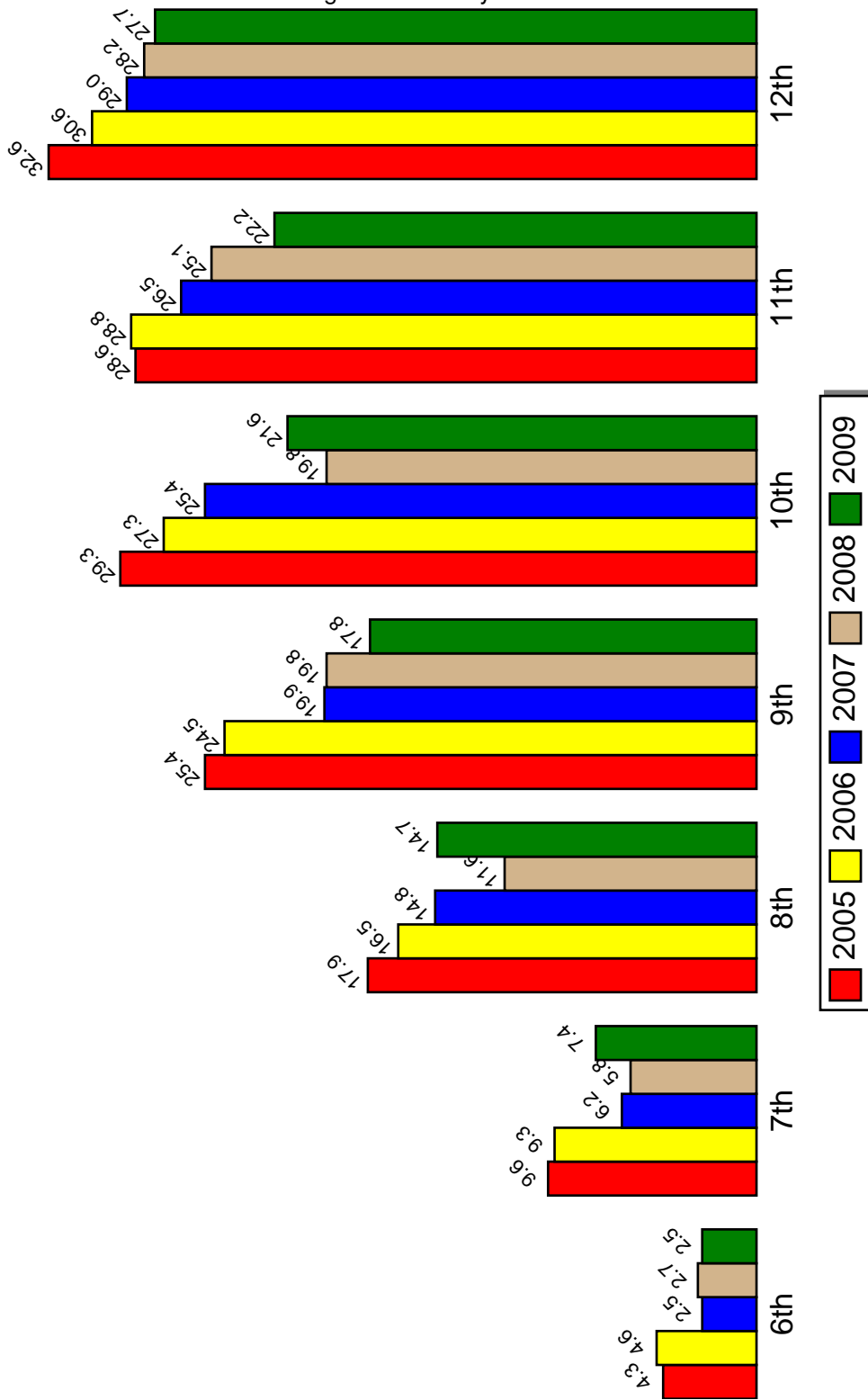
Figure 5: Annual Use of Wine Coolers



Source: PRIDE Survey

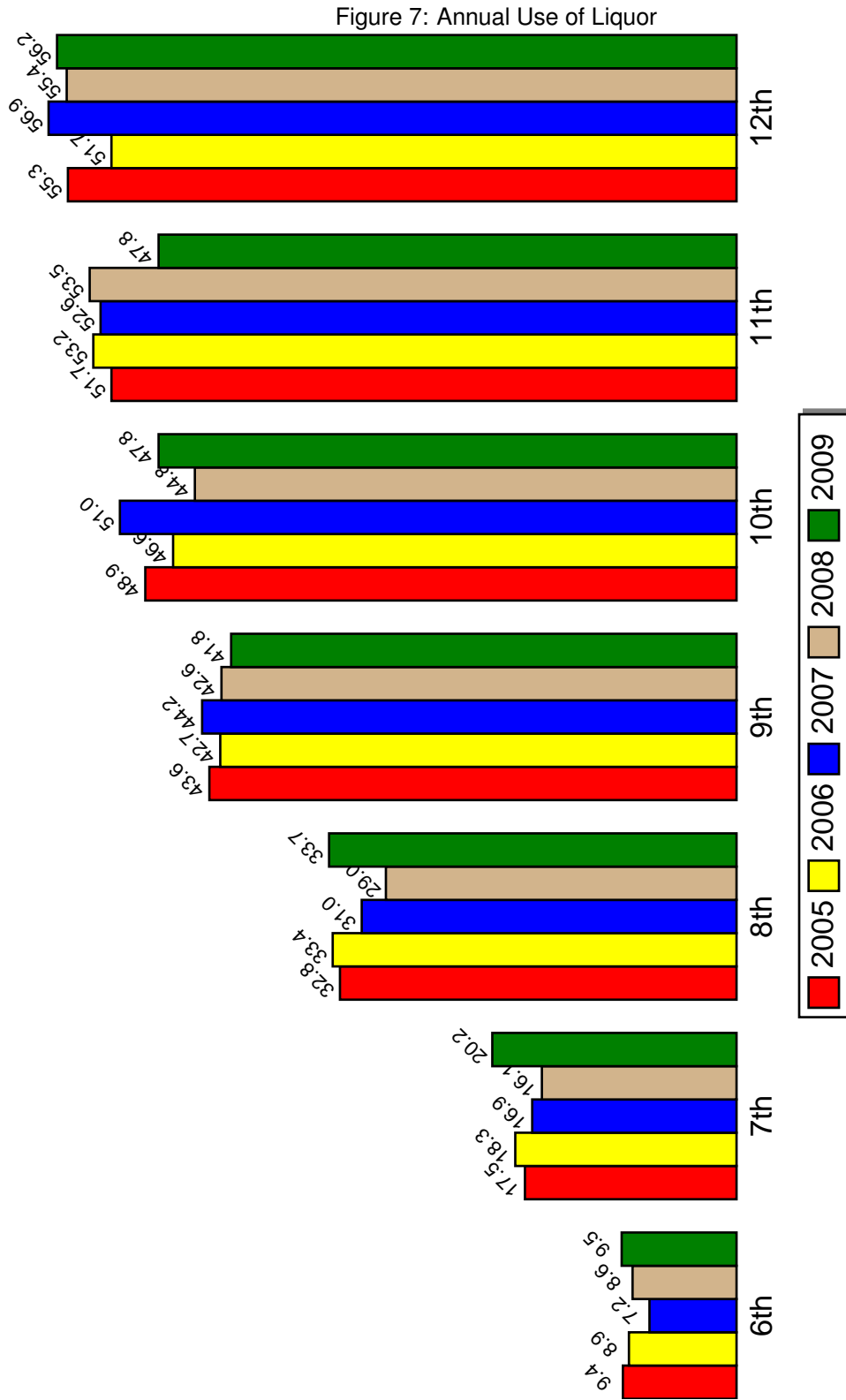
# Monthly Use of Wine Coolers

Figure 6: Monthly Use of Wine Coolers



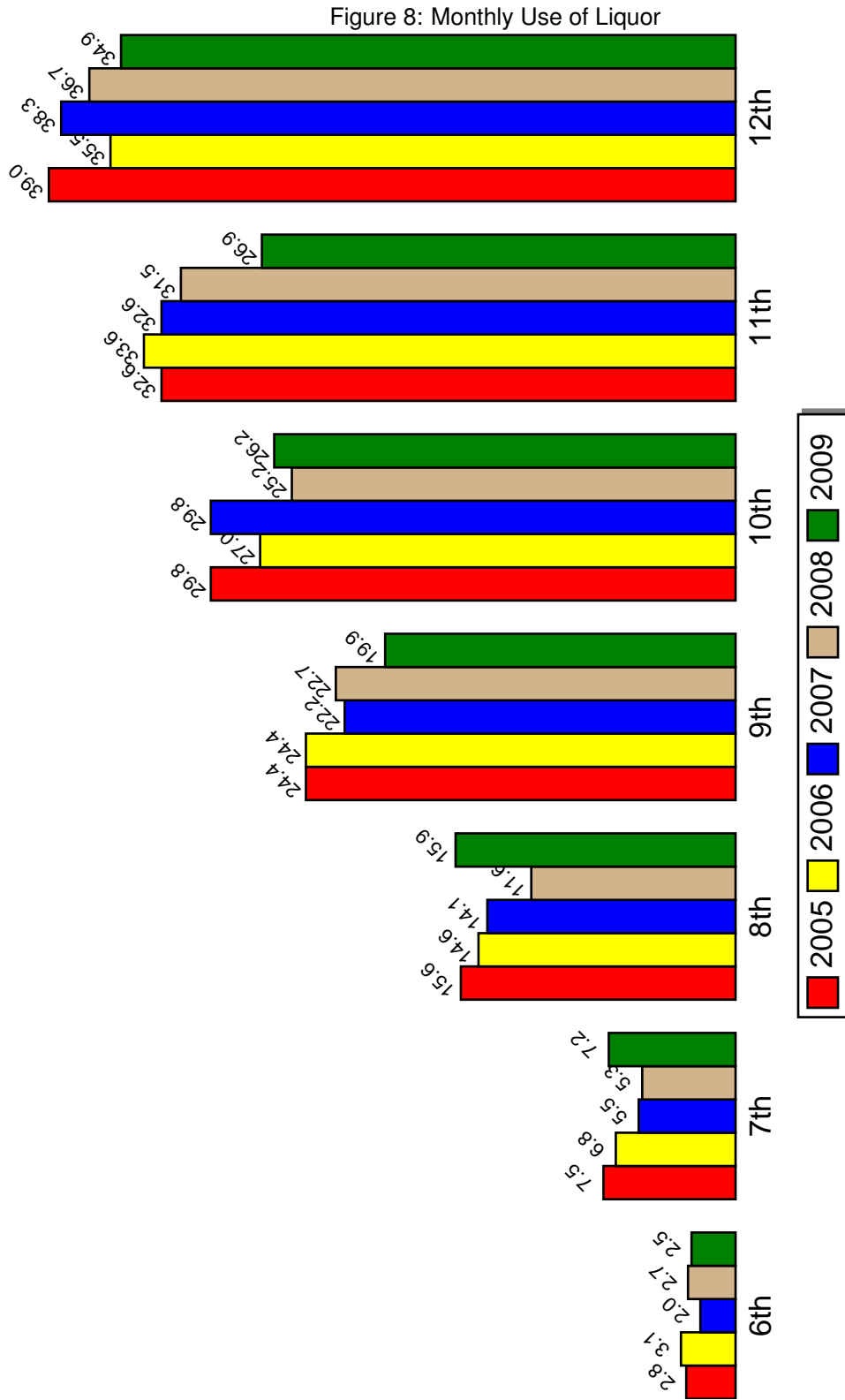
Source: PRIDE Survey

Annual Use of Liquor



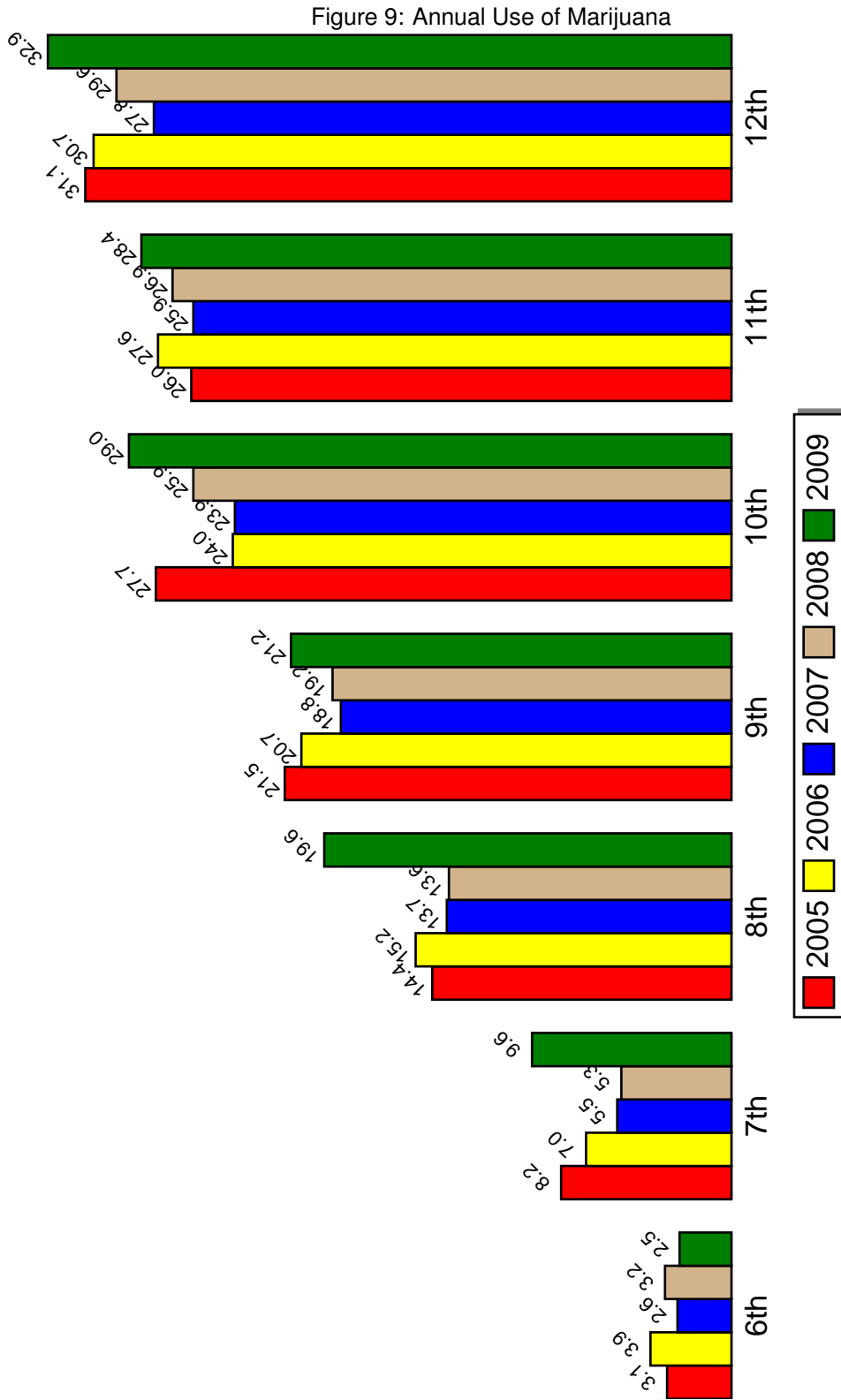
Source: PRIDE Survey

# Monthly Use of Liquor



Source: PRIDE Survey

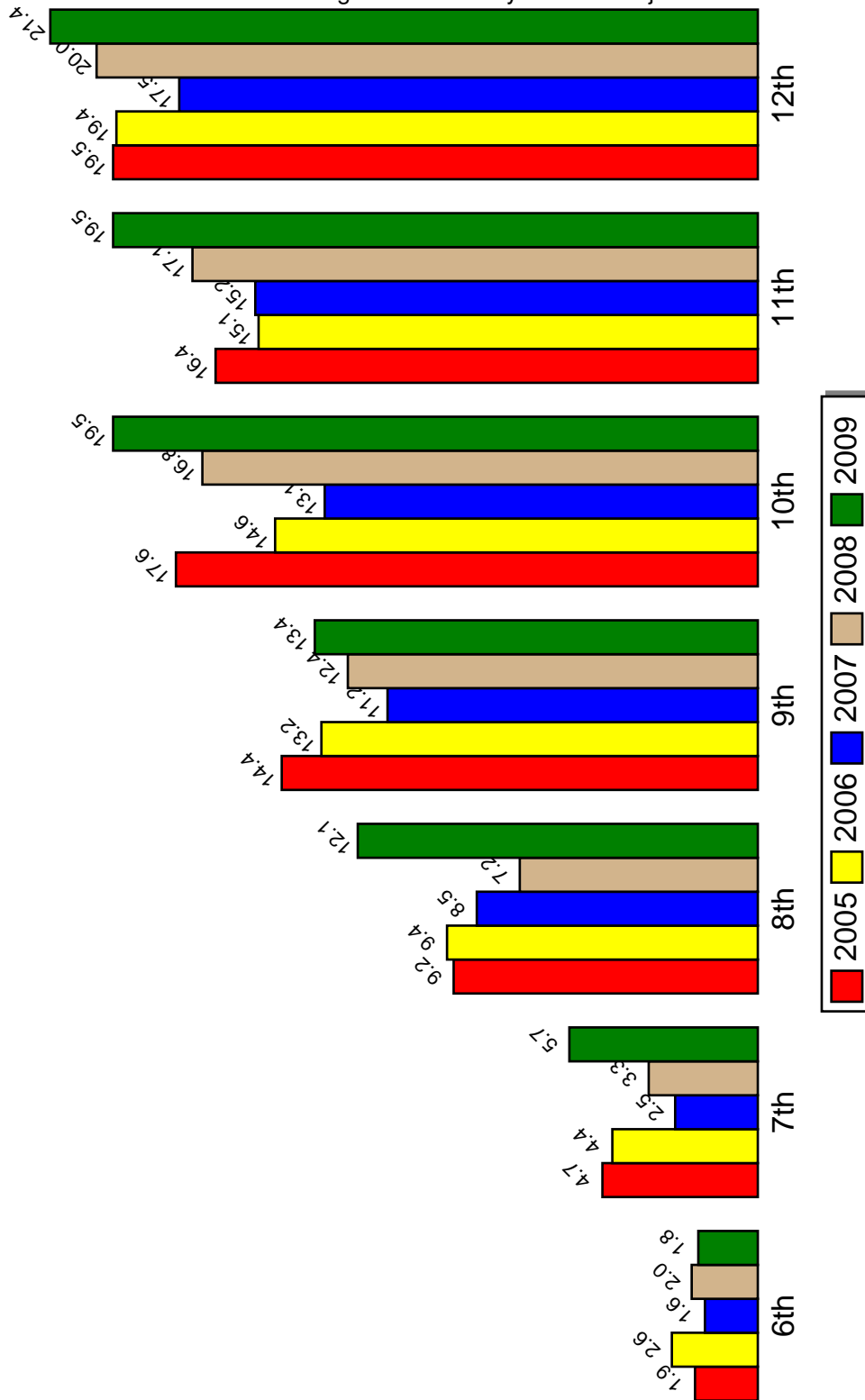
# Annual Use of Marijuana



Source: PRIDE Survey

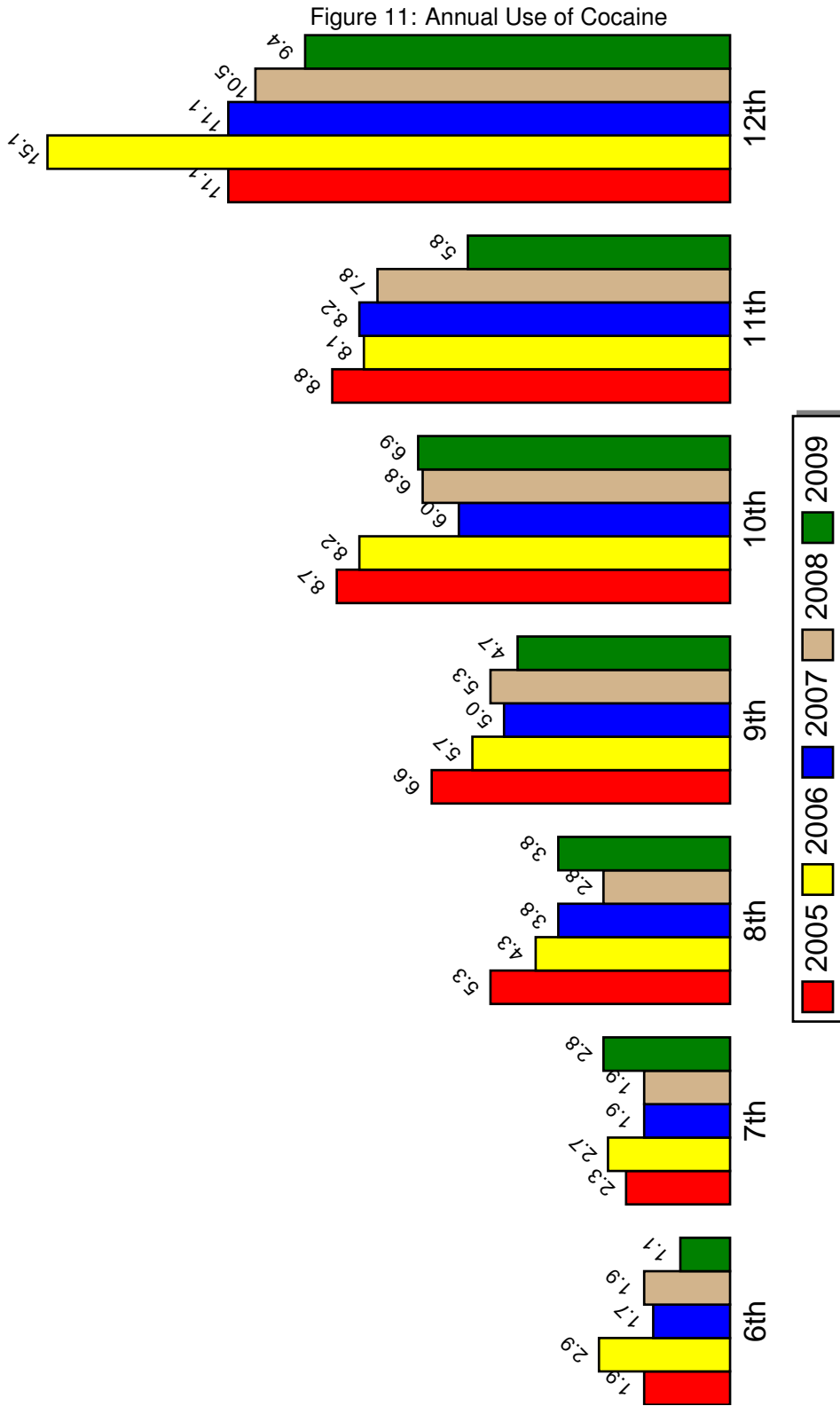
# Monthly Use of Marijuana

Figure 10: Monthly Use of Marijuana



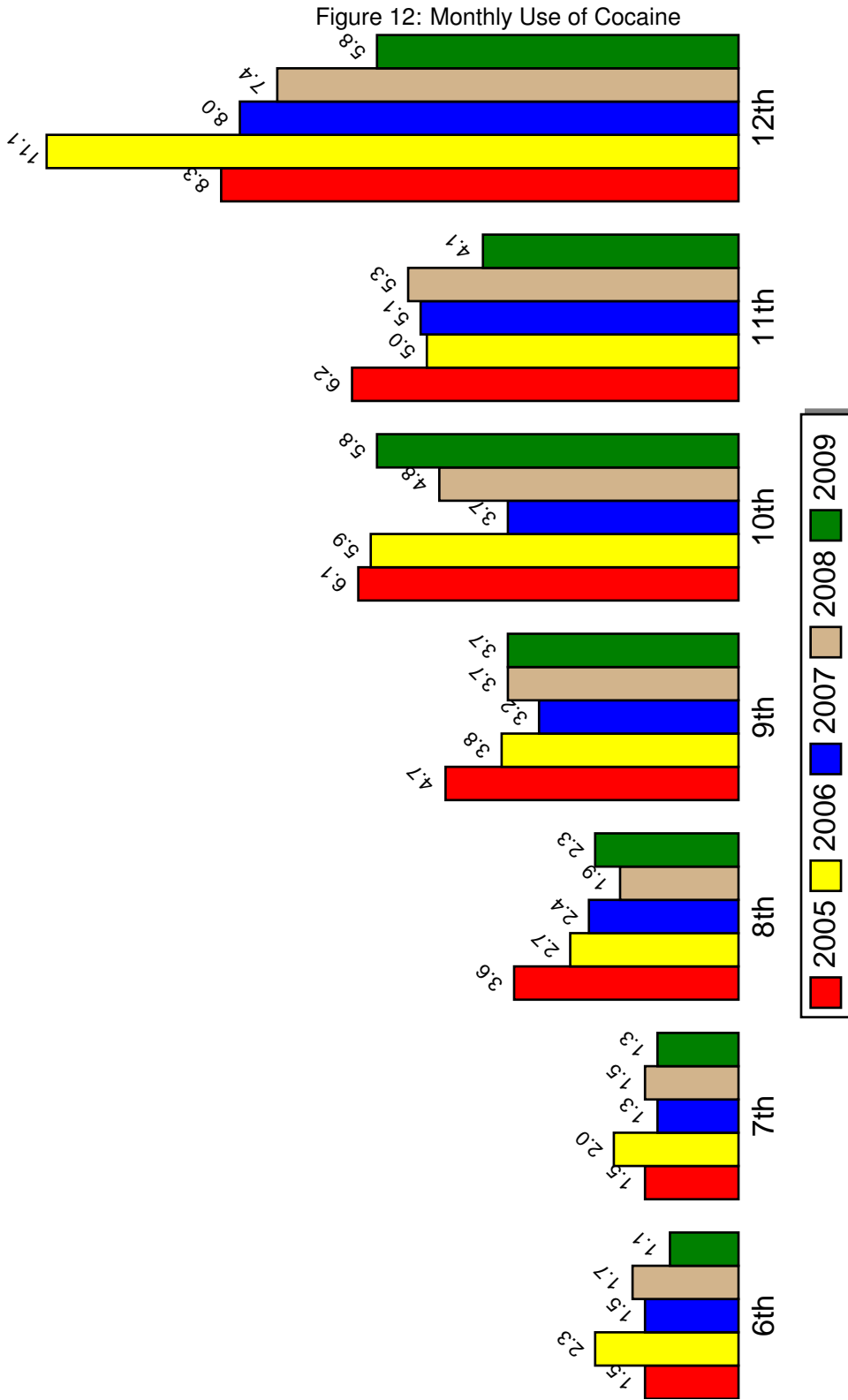
Source: PRIDE Survey

# Annual Use of Cocaine



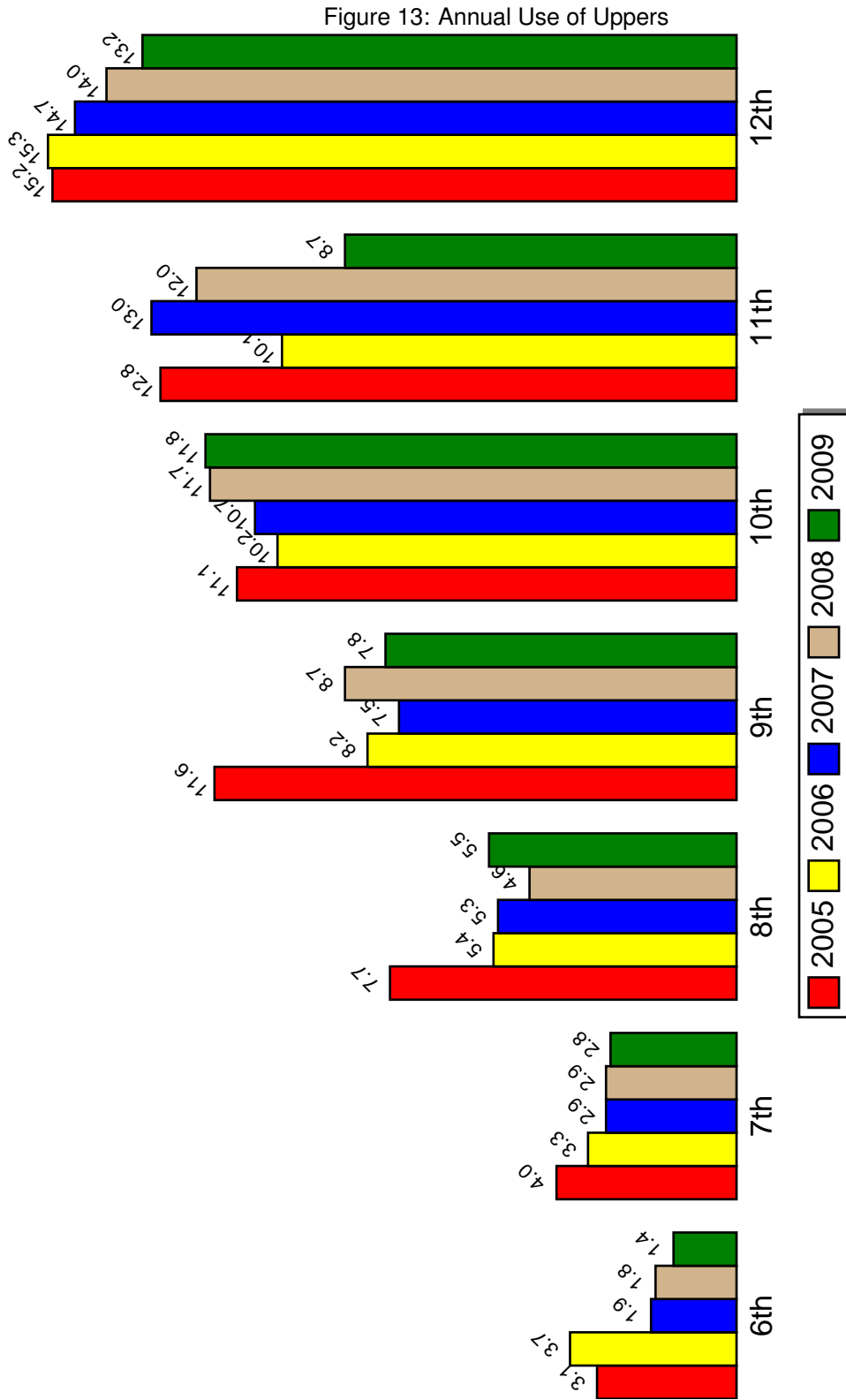
Source: PRIDE Survey

# Monthly Use of Cocaine

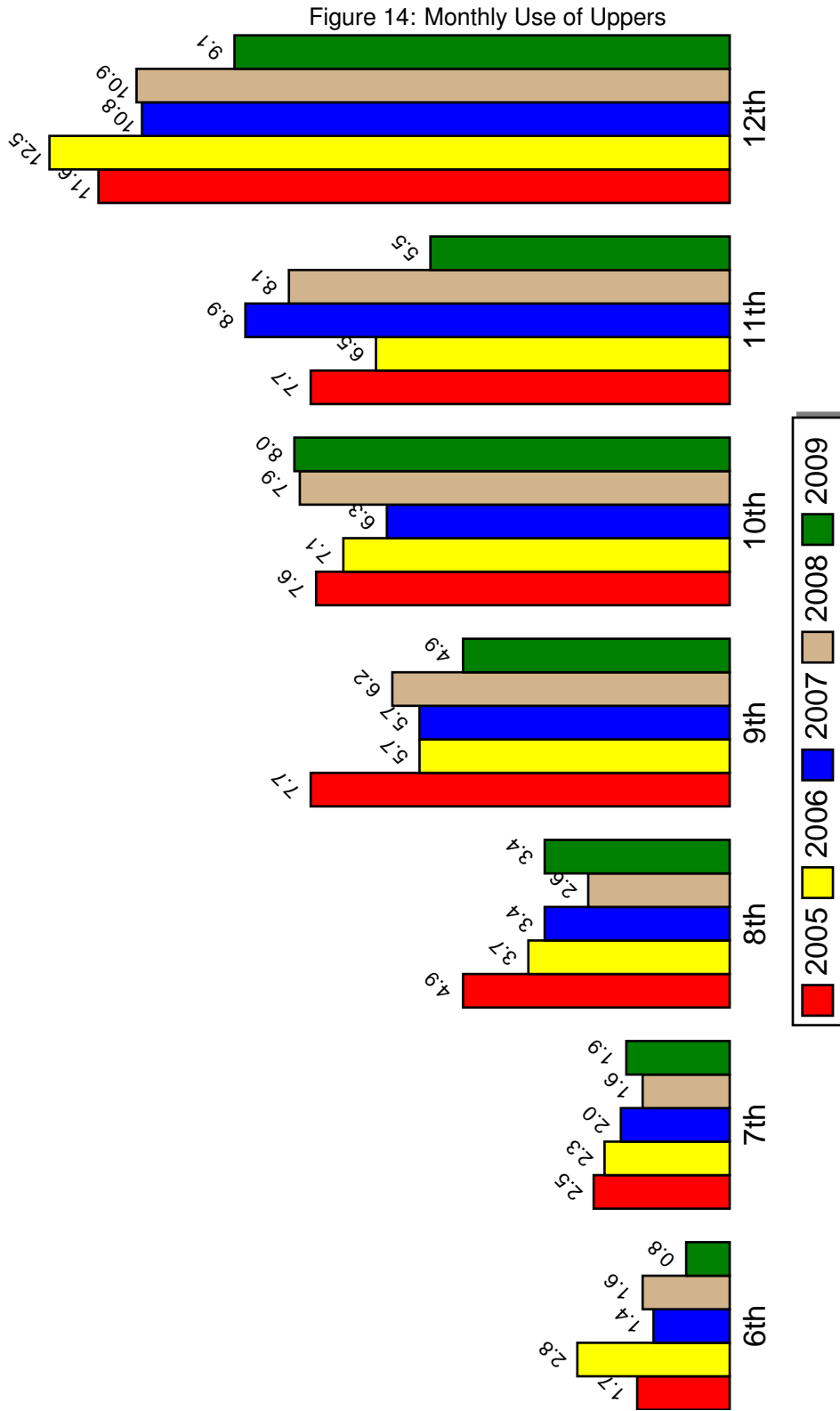


Source: PRIDE Survey

Annual Use of Uppers

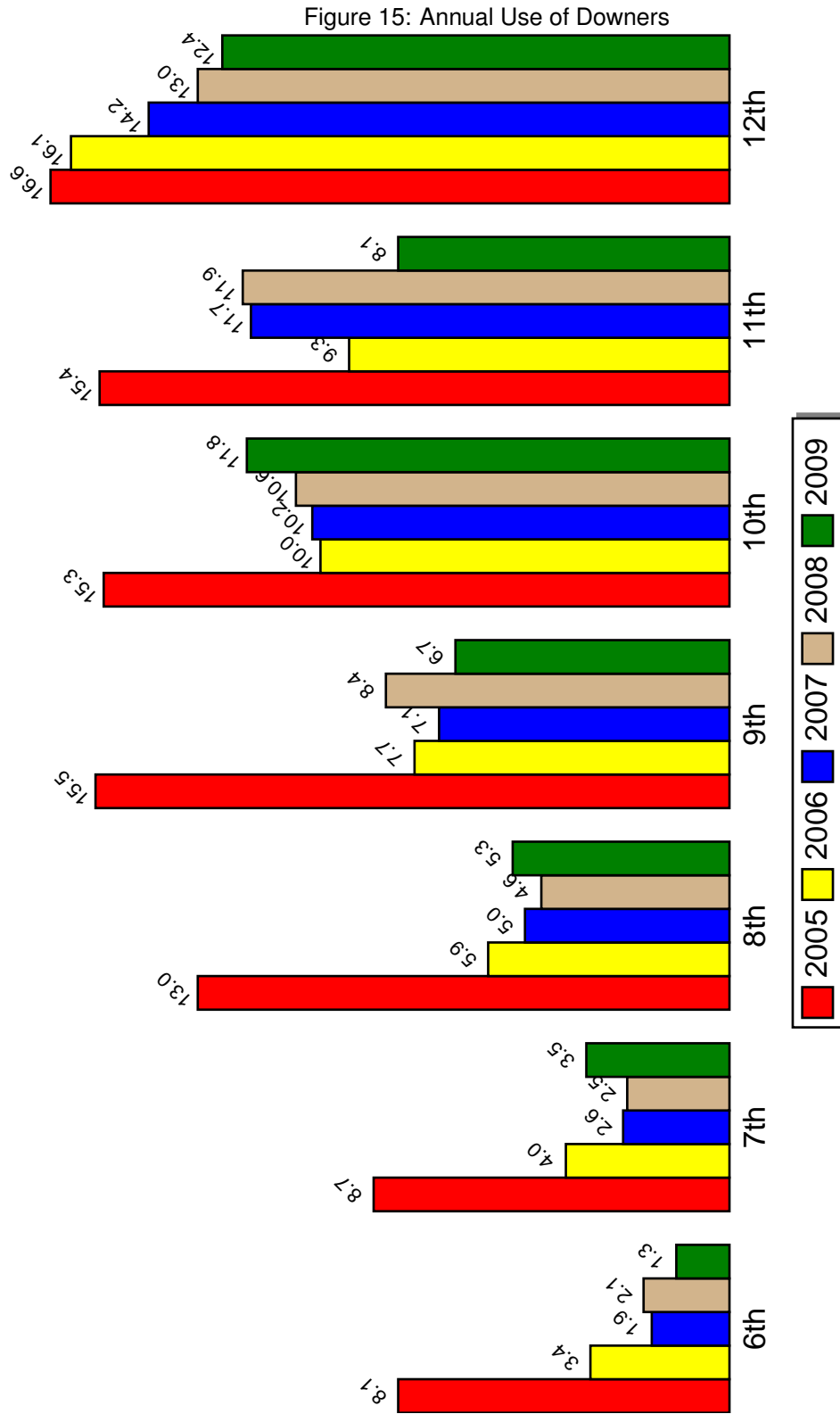


# Monthly Use of Uppers



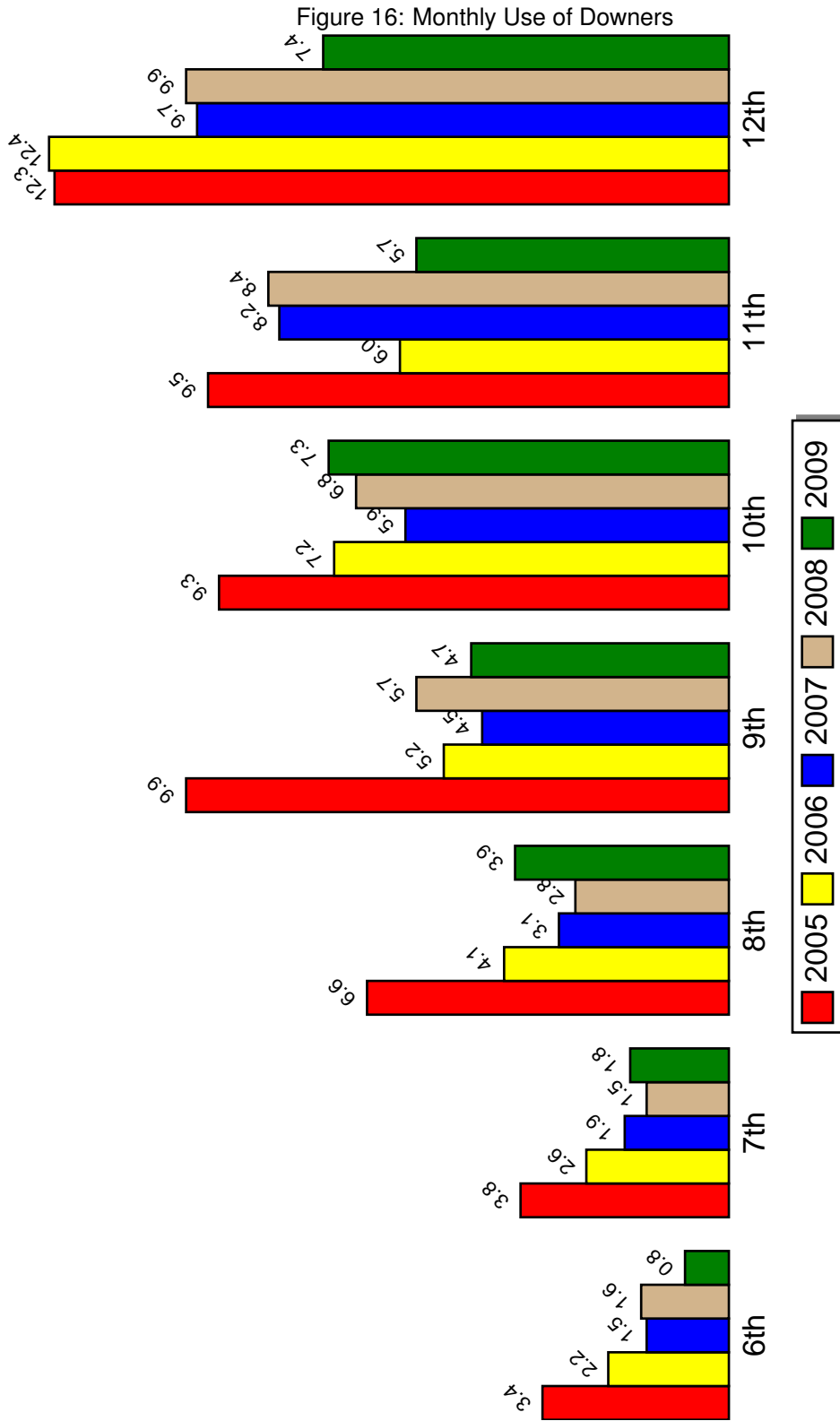
Source: PRIDE Survey

Annual Use of Downers



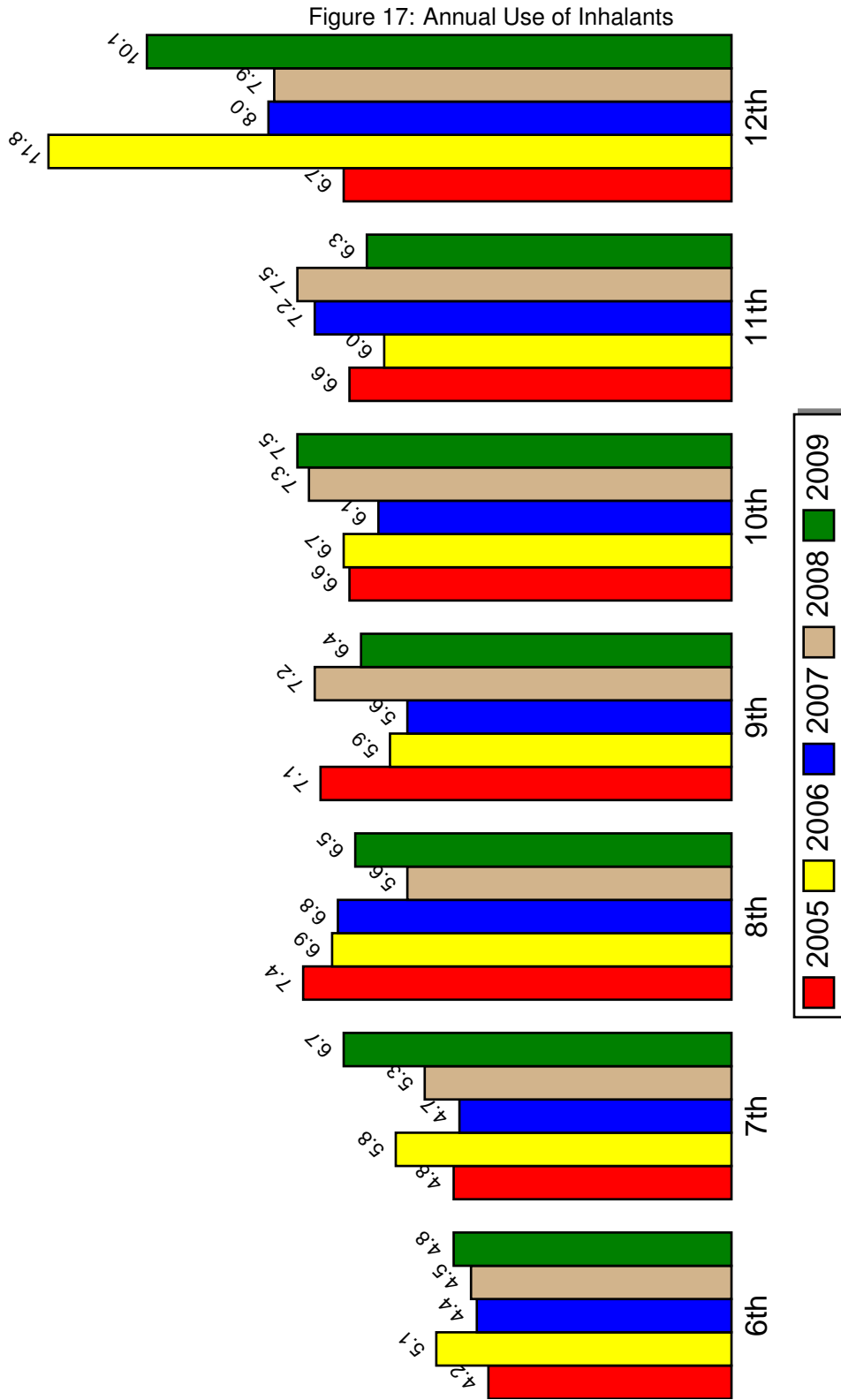
Source: PRIDE Survey

# Monthly Use of Downers



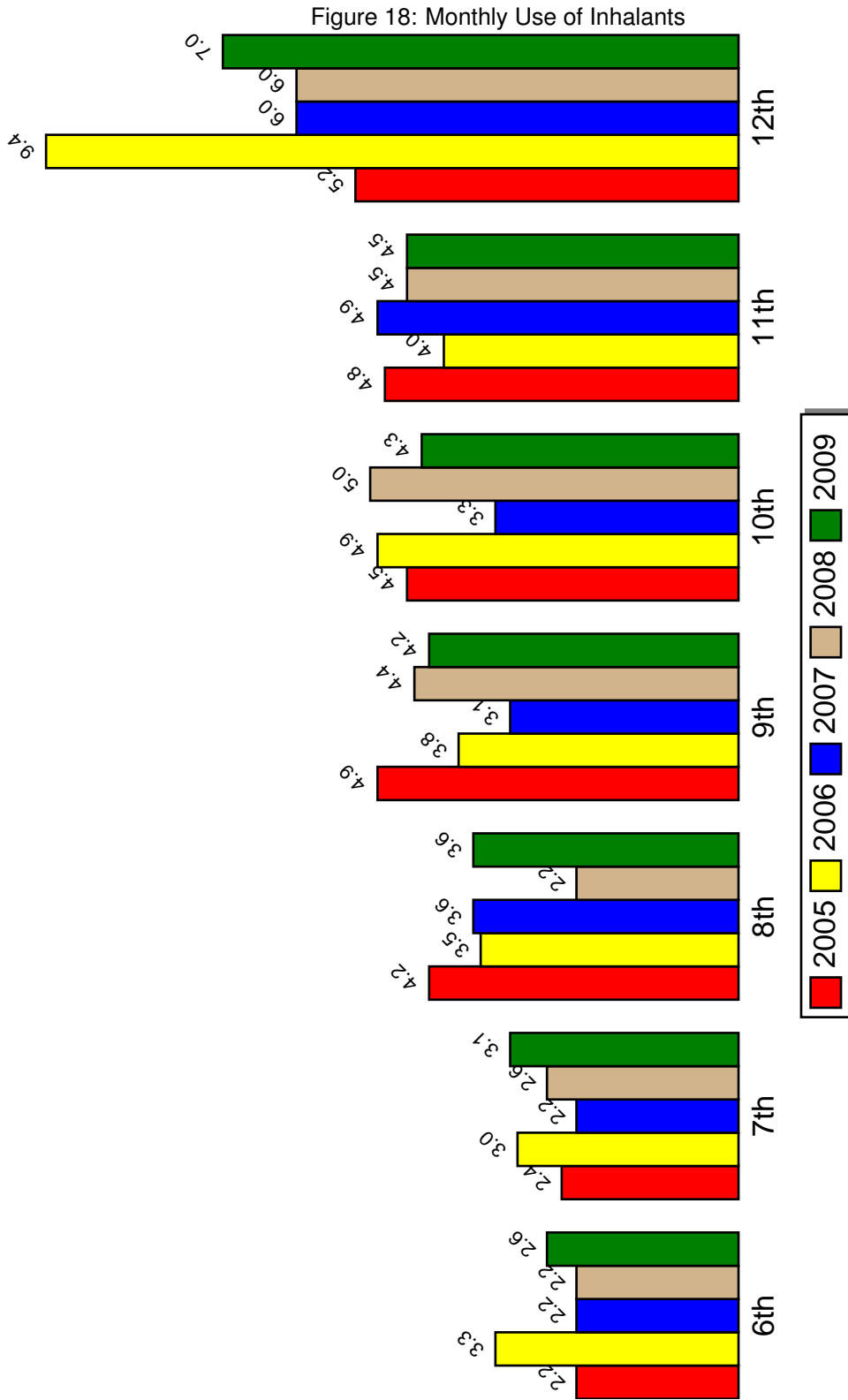
Source: PRIDE Survey

Annual Use of Inhalants



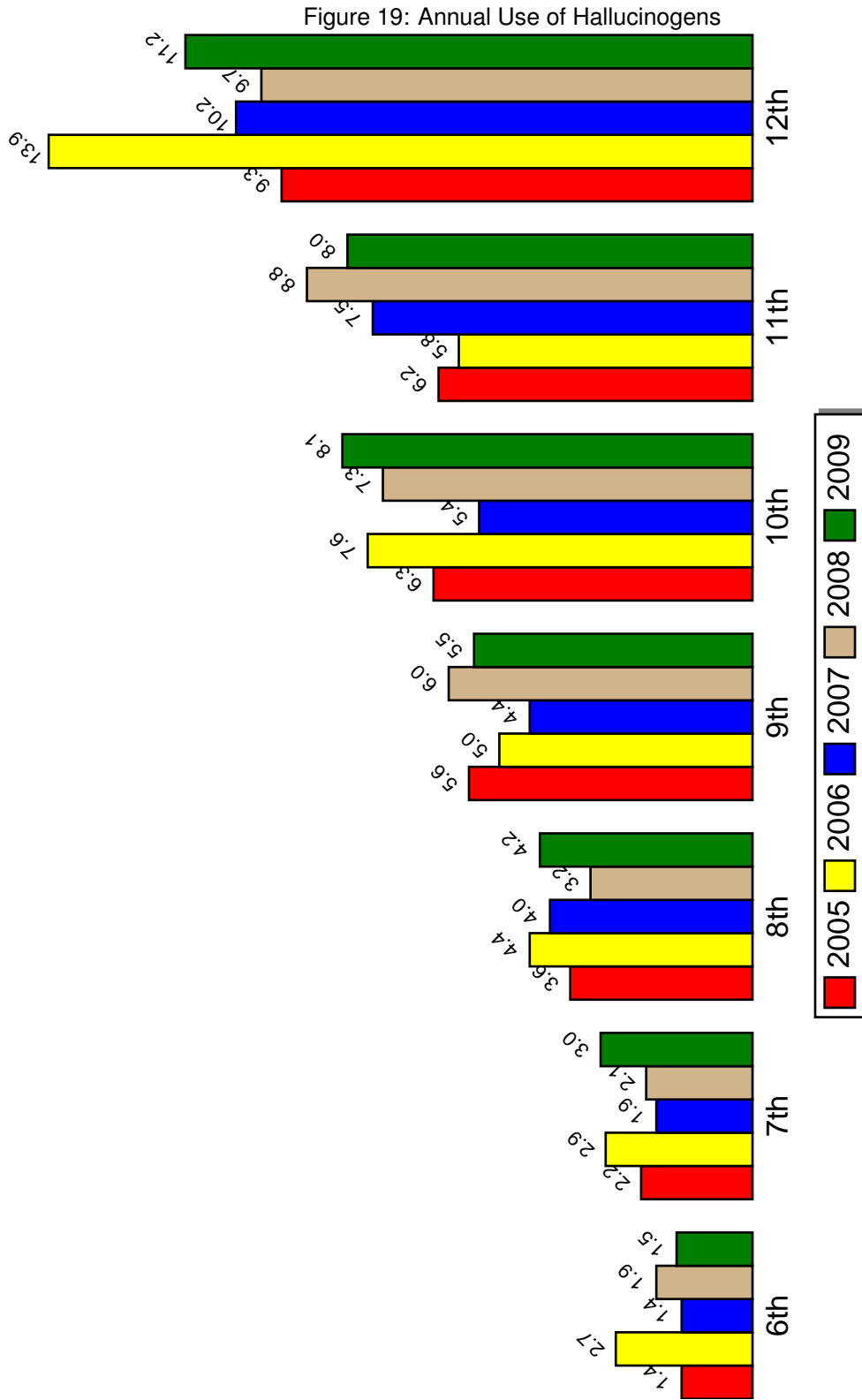
Source: PRIDE Survey

# Monthly Use of Inhalants



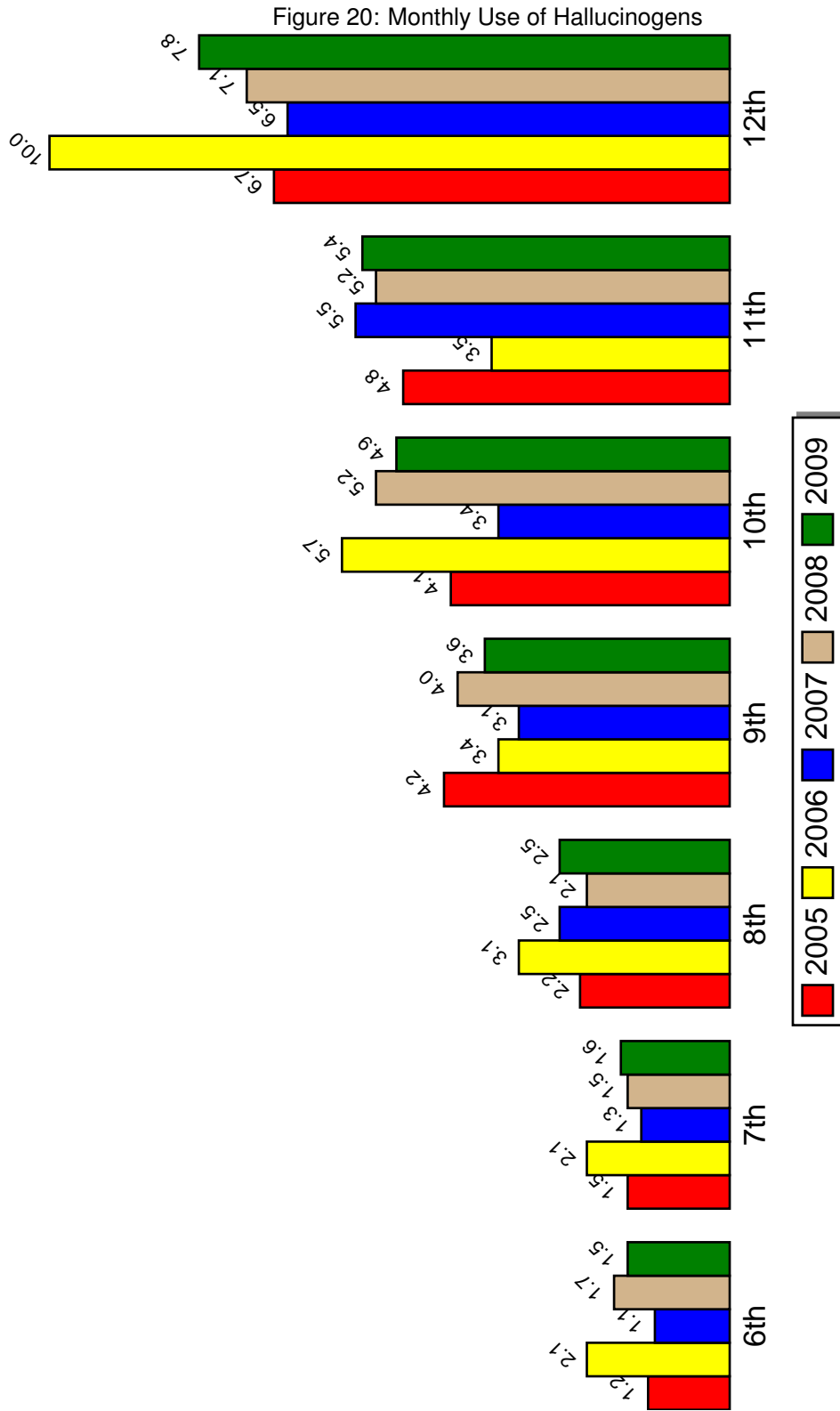
Source: PRIDE Survey

# Annual Use of Hallucinogens



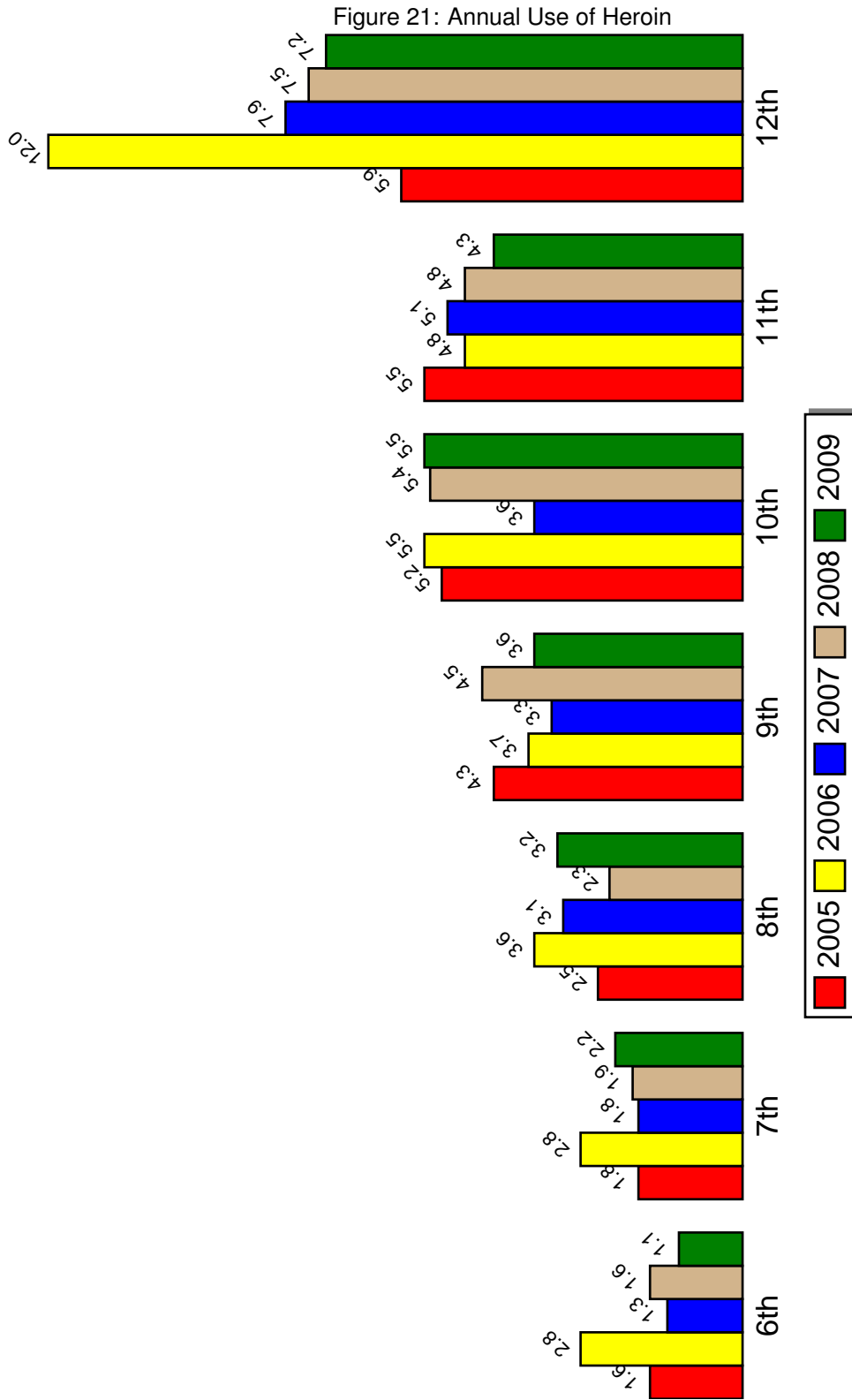
Source: PRIDE Survey

# Monthly Use of Hallucinogens



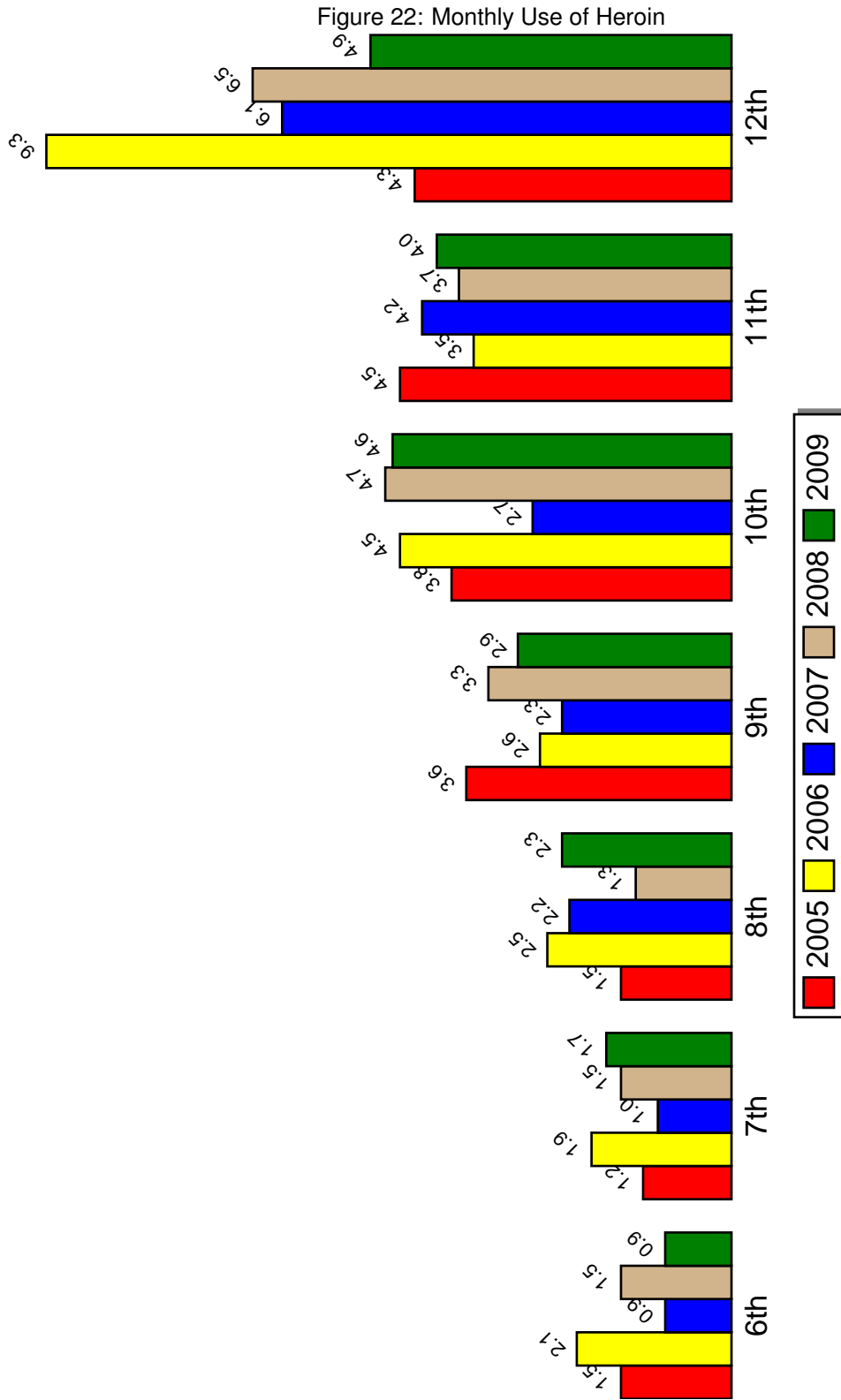
Source: PRIDE Survey

# Annual Use of Heroin



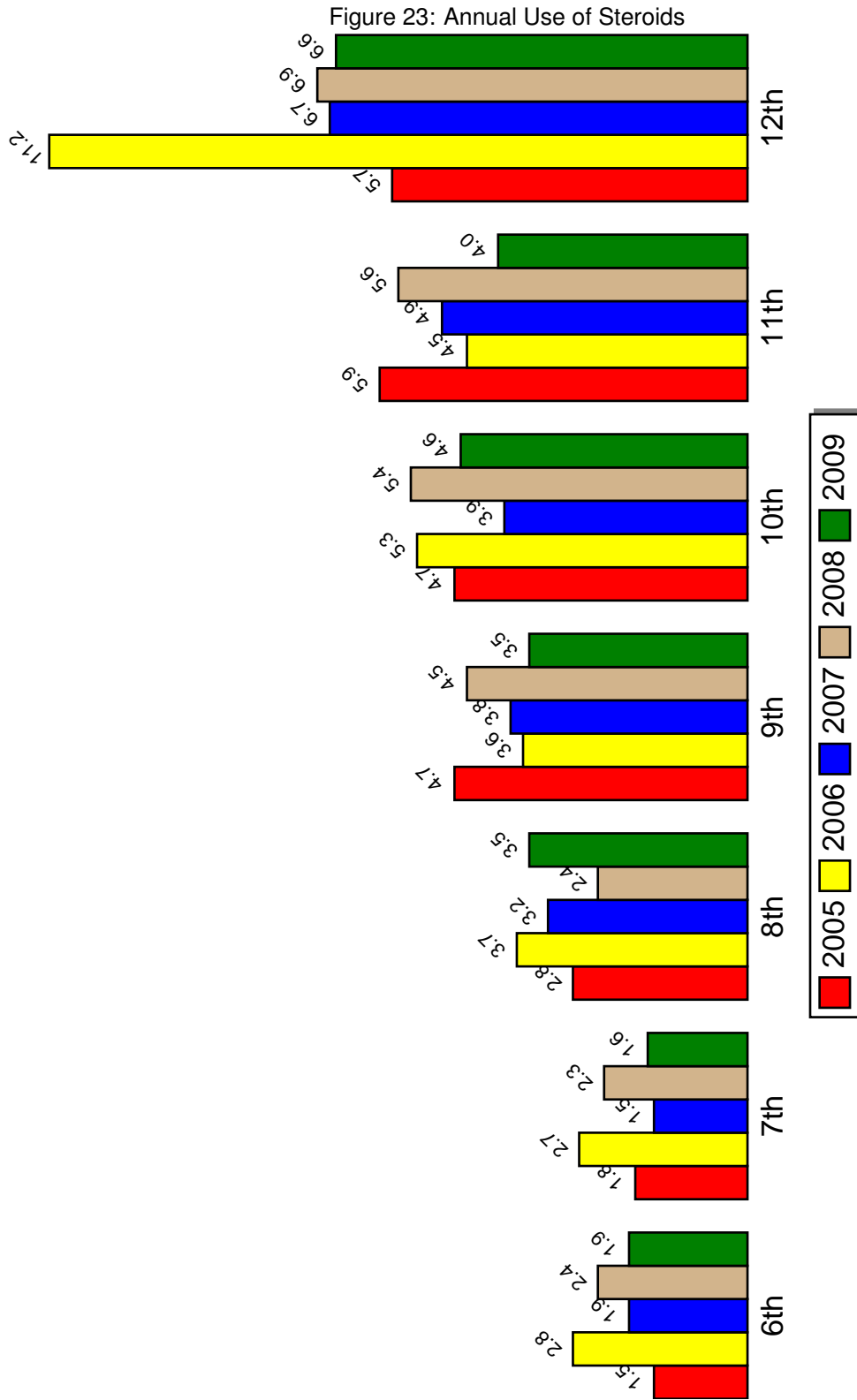
Source: PRIDE Survey

# Monthly Use of Heroin



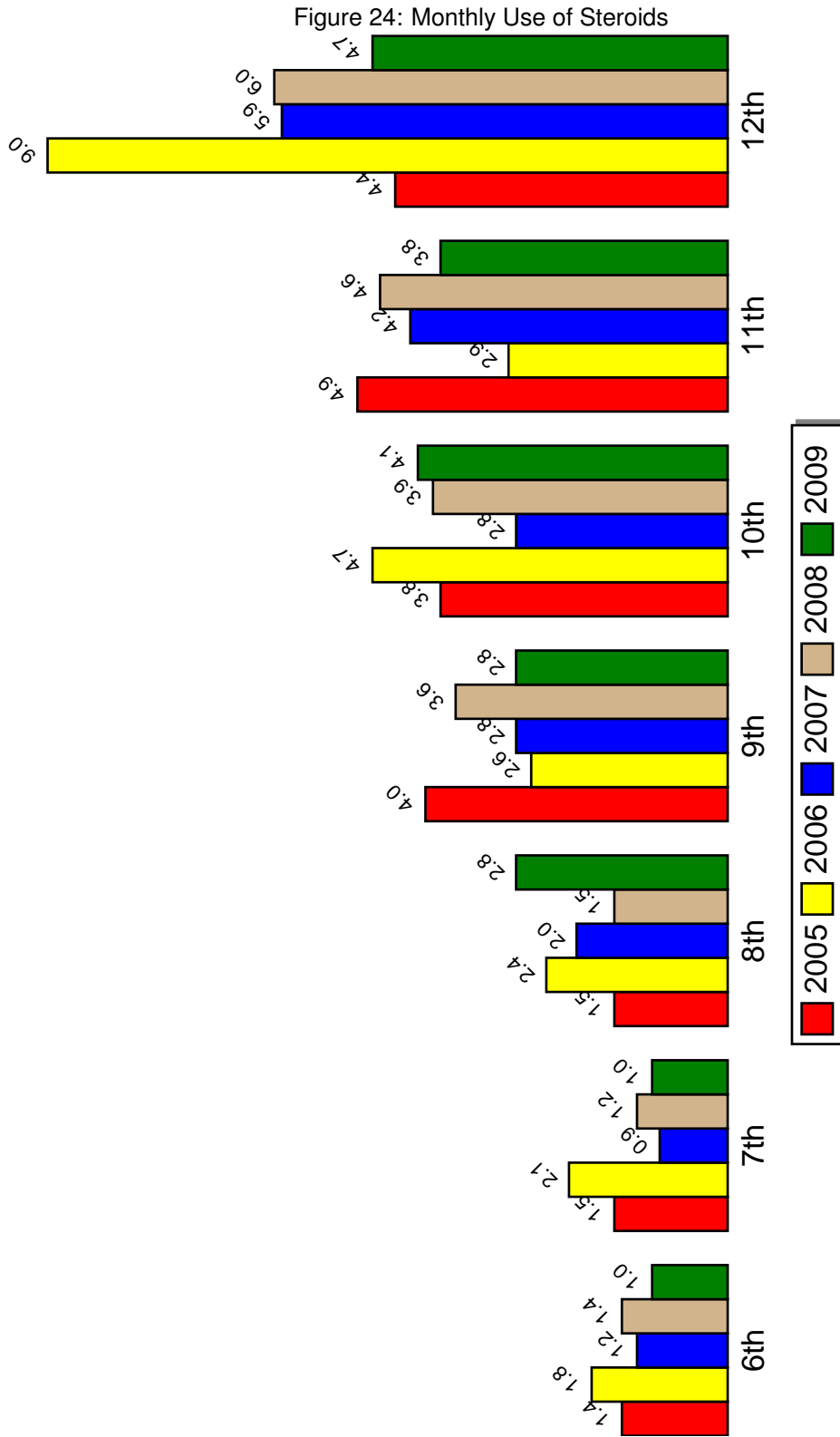
Source: PRIDE Survey

# Annual Use of Steroids



Source: PRIDE Survey

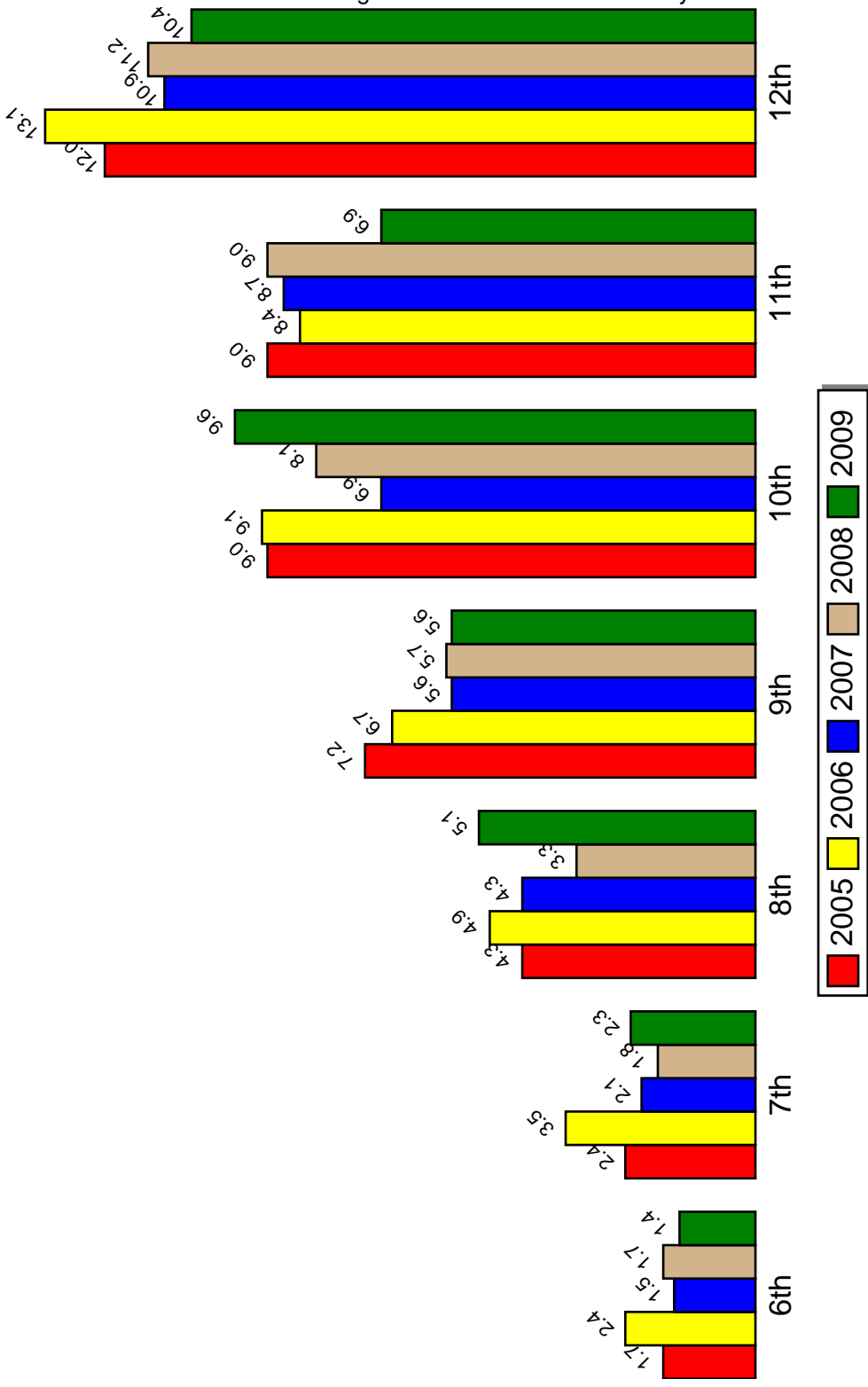
# Monthly Use of Steroids



Source: PRIDE Survey

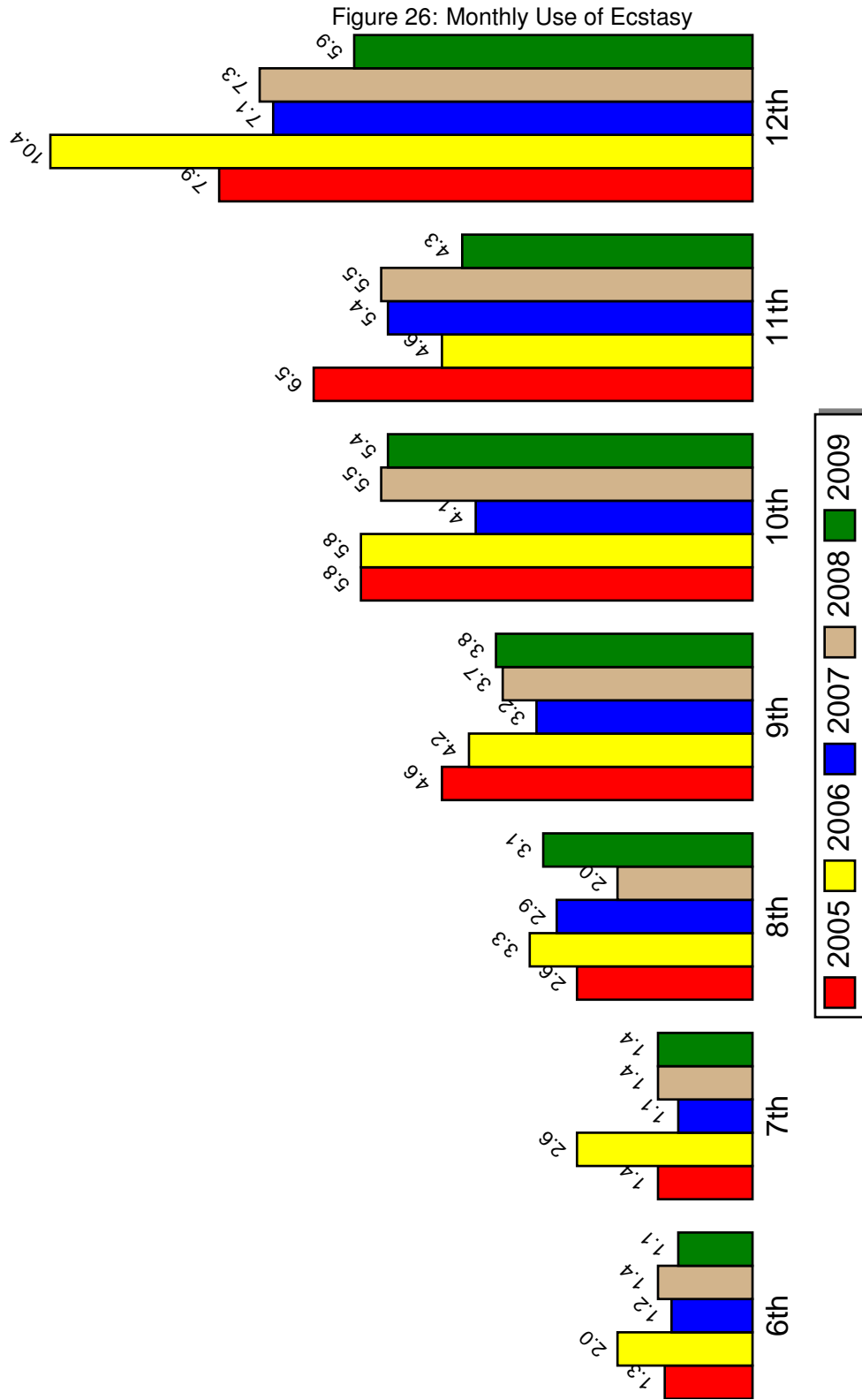
Annual Use of Ecstasy

Figure 25: Annual Use of Ecstasy



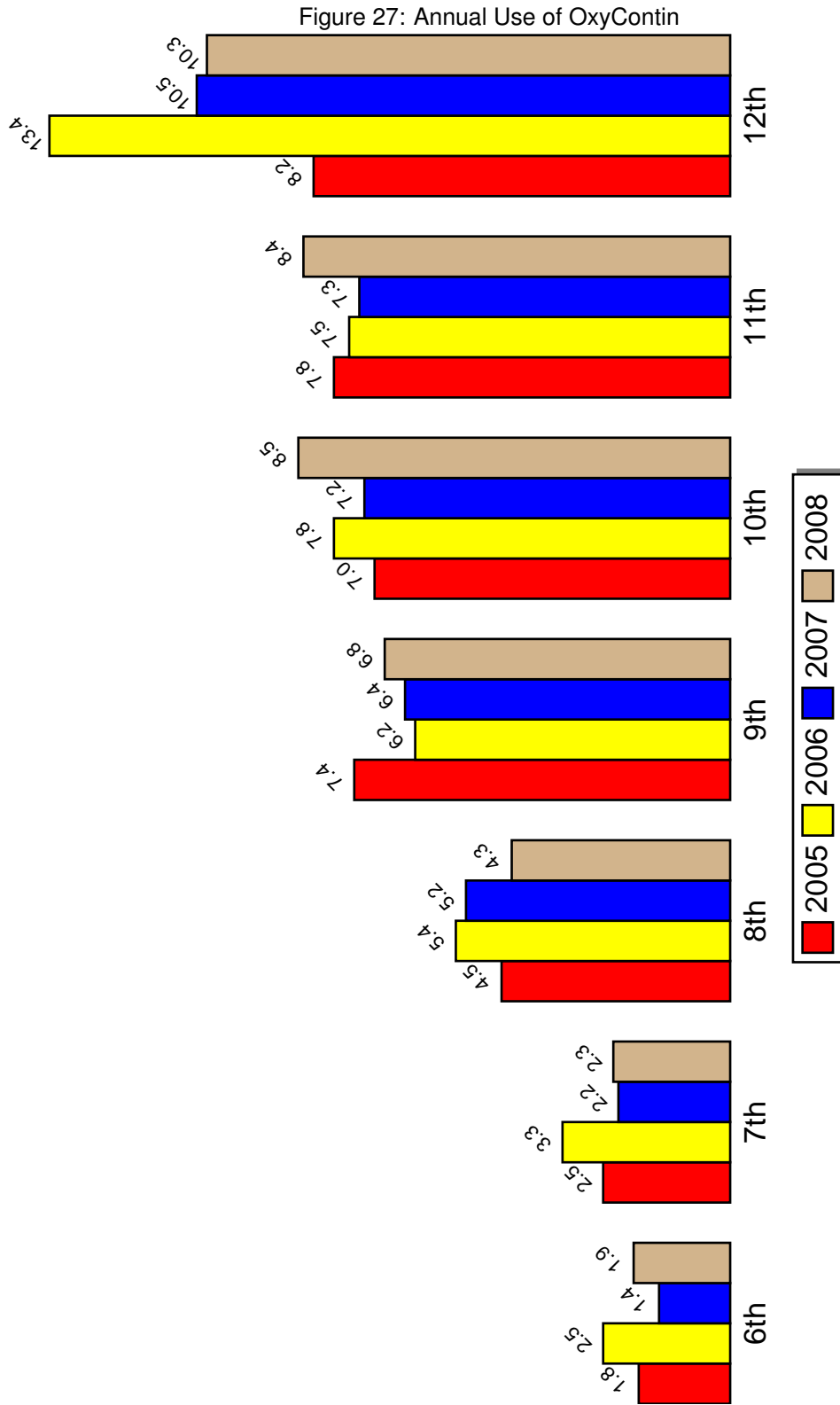
Source: PRIDE Survey

# Monthly Use of Ecstasy



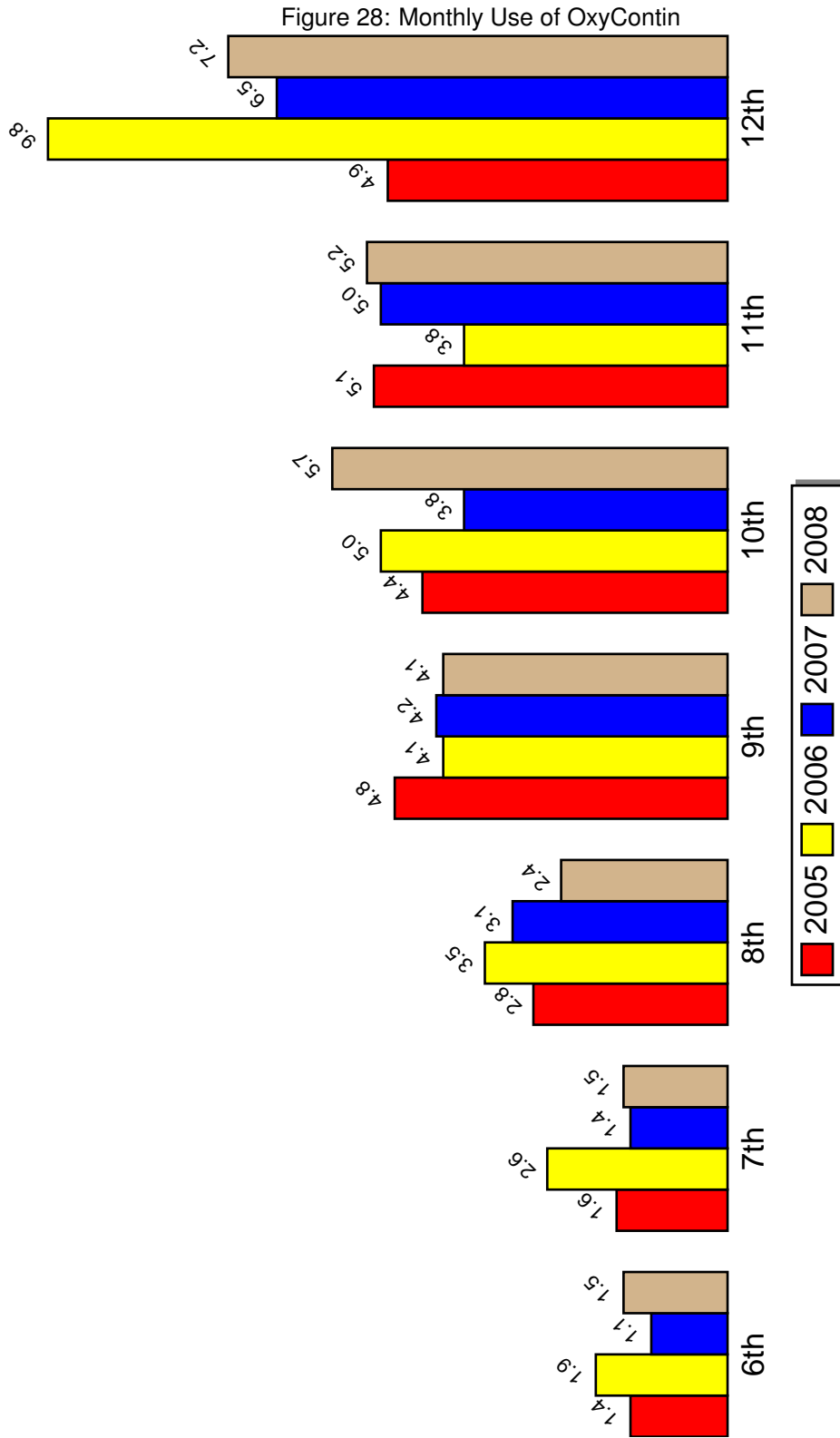
Source: PRIDE Survey

# Annual Use of OxyContin



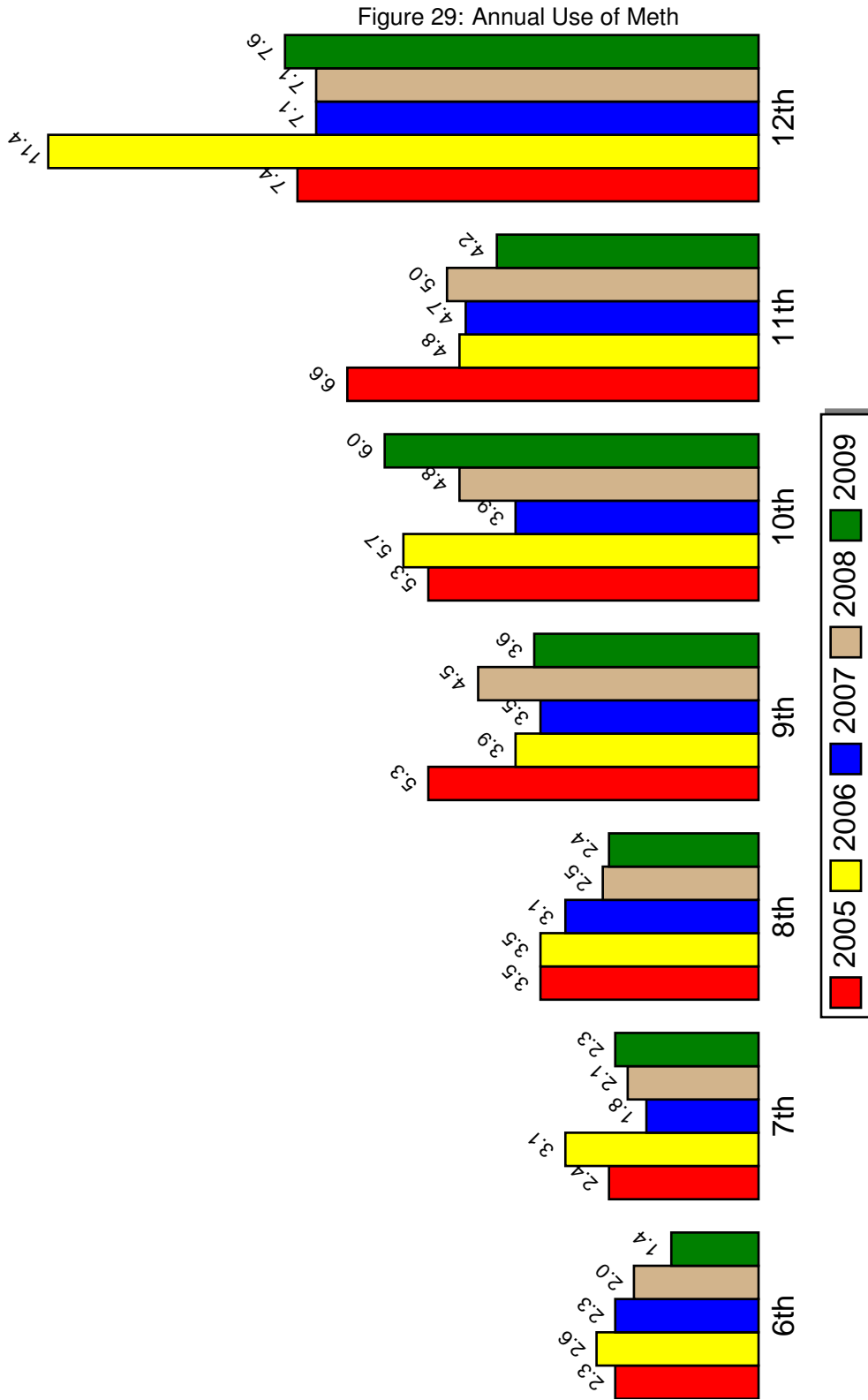
Source: PRIDE Survey

# Monthly Use of OxyContin



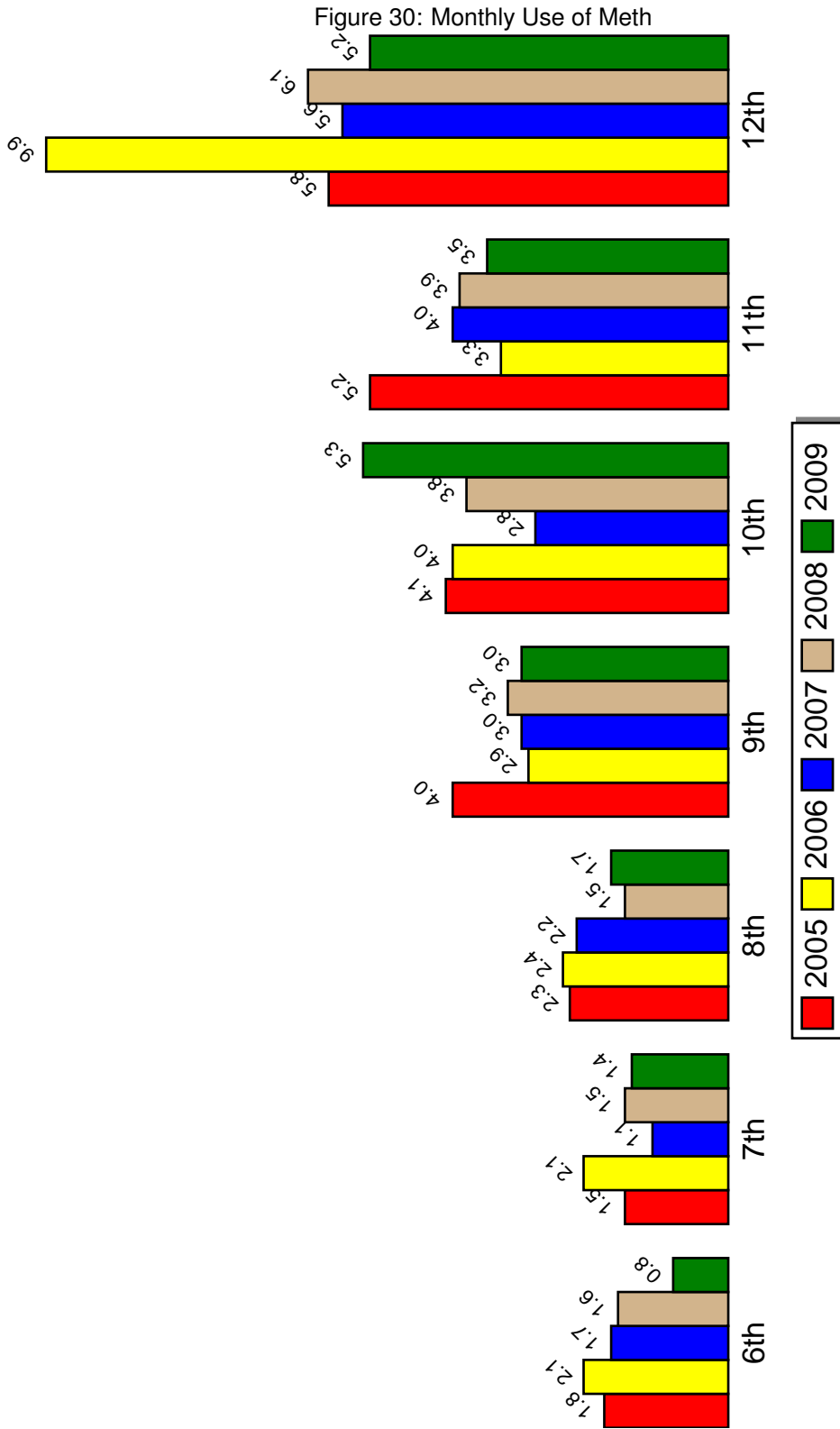
Source: PRIDE Survey

# Annual Use of Meth



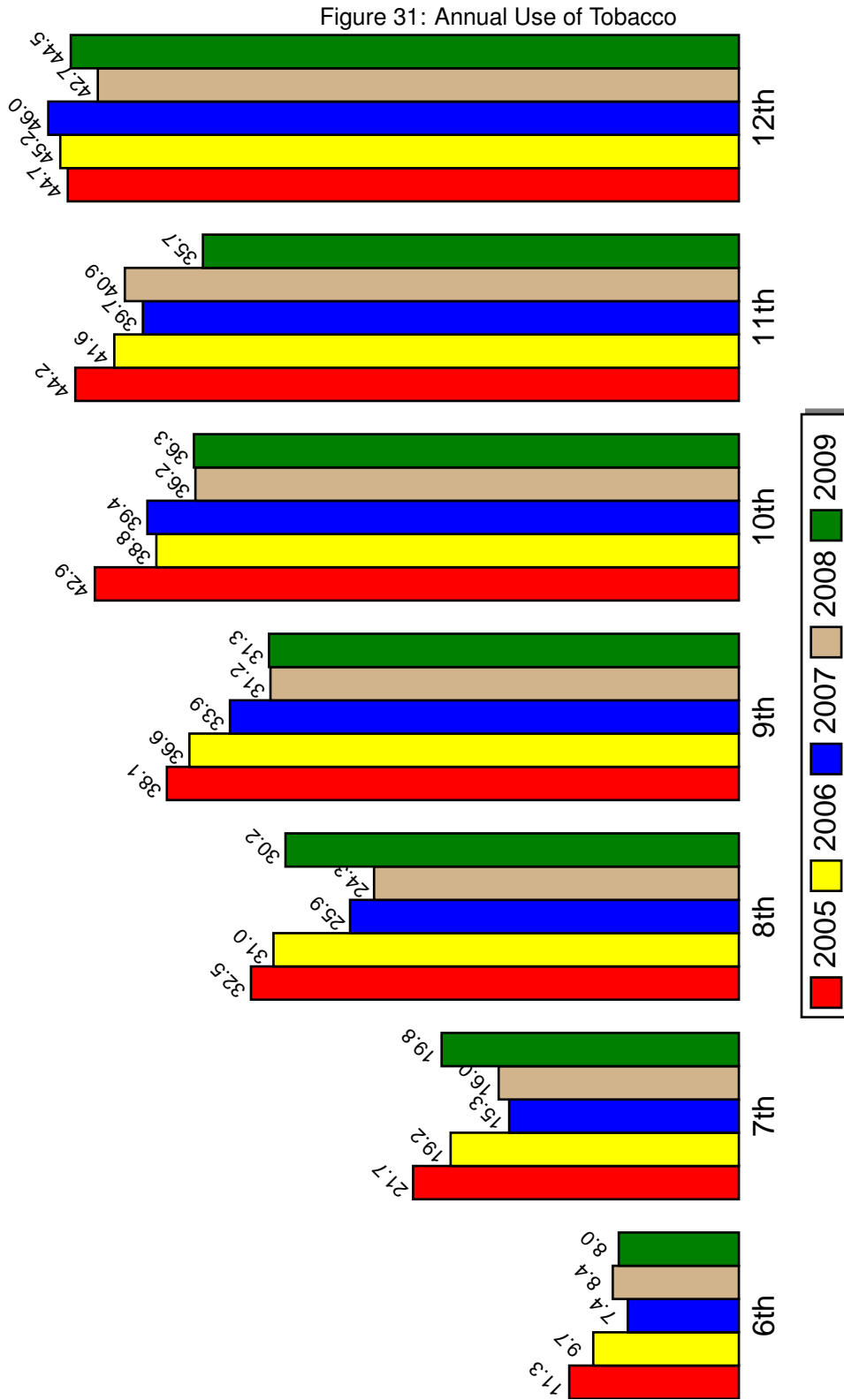
Source: PRIDE Survey

# Monthly Use of Meth



Source: PRIDE Survey

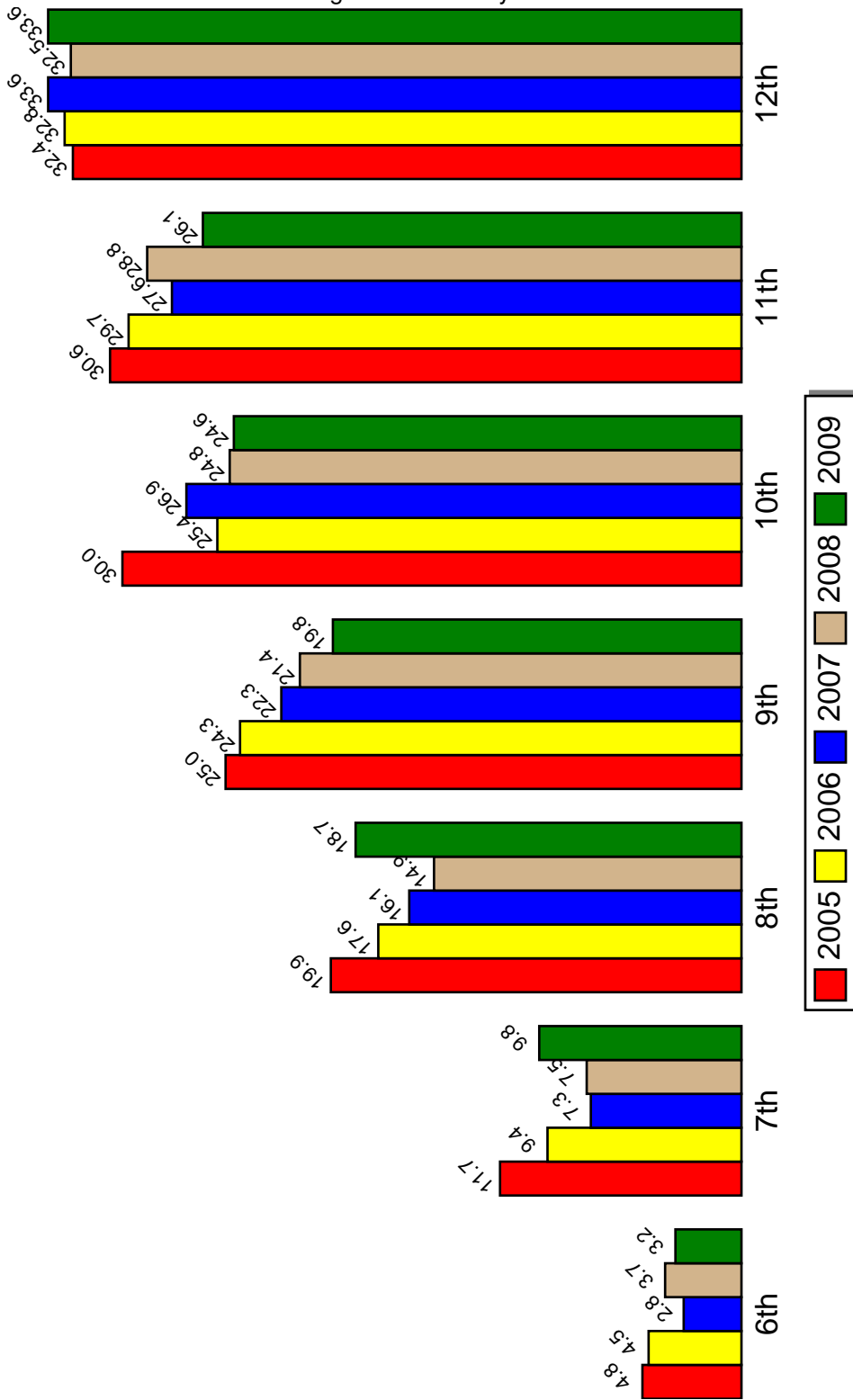
Annual Use of Tobacco



Source: PRIDE Survey

Monthly Use of Tobacco

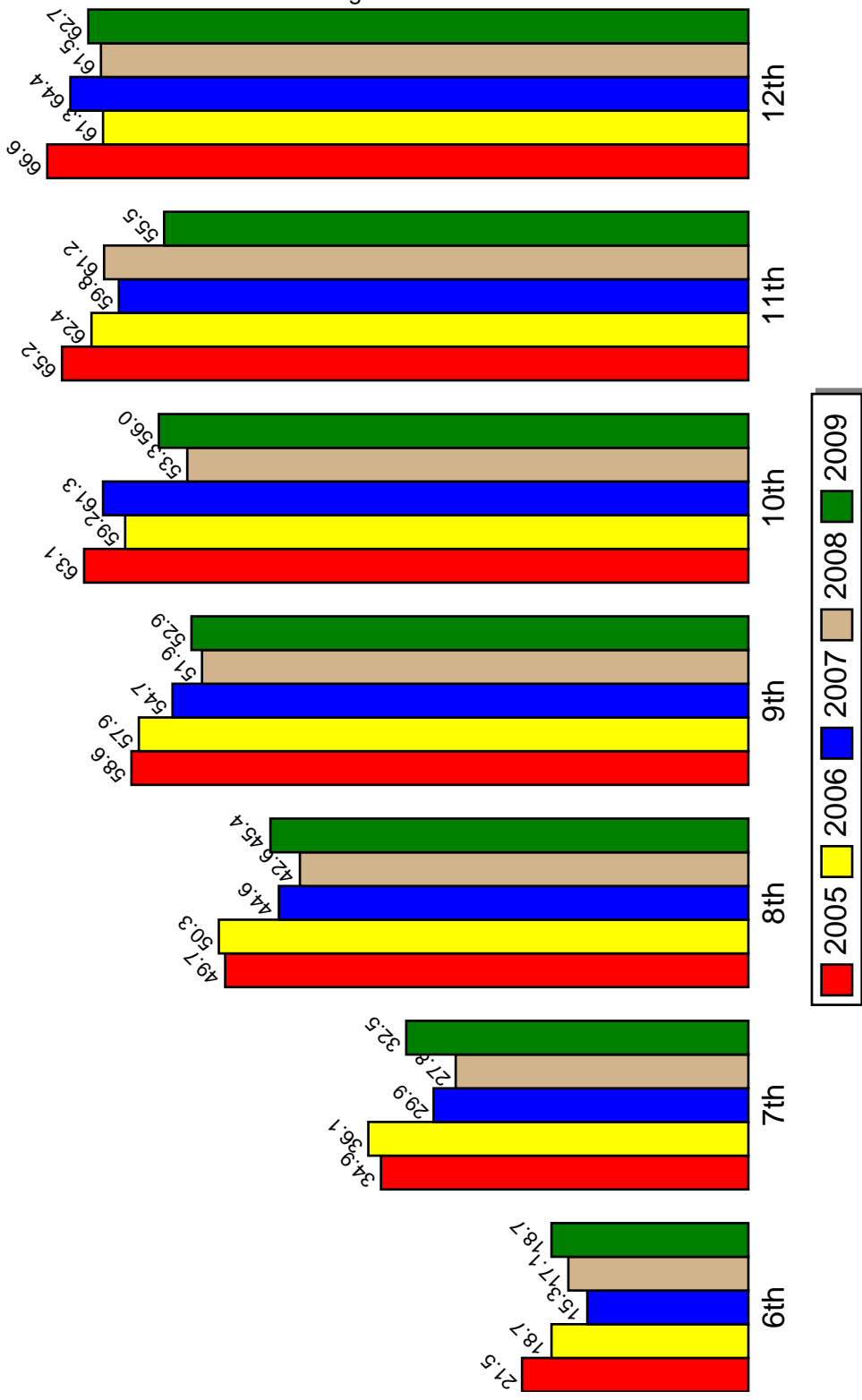
Figure 32: Monthly Use of Tobacco



Source: PRIDE Survey

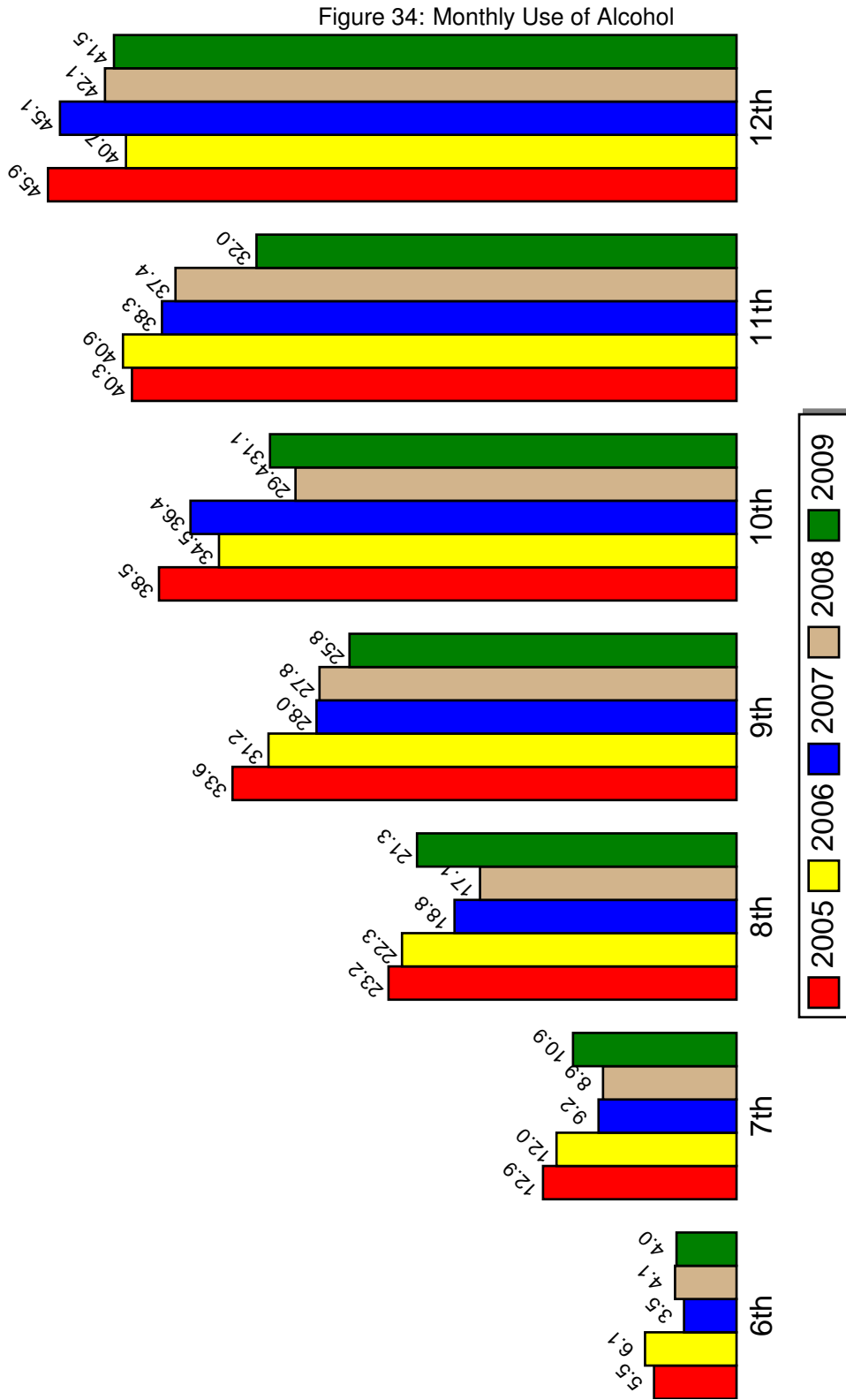
Annual Use of Alcohol

Figure 33: Annual Use of Alcohol



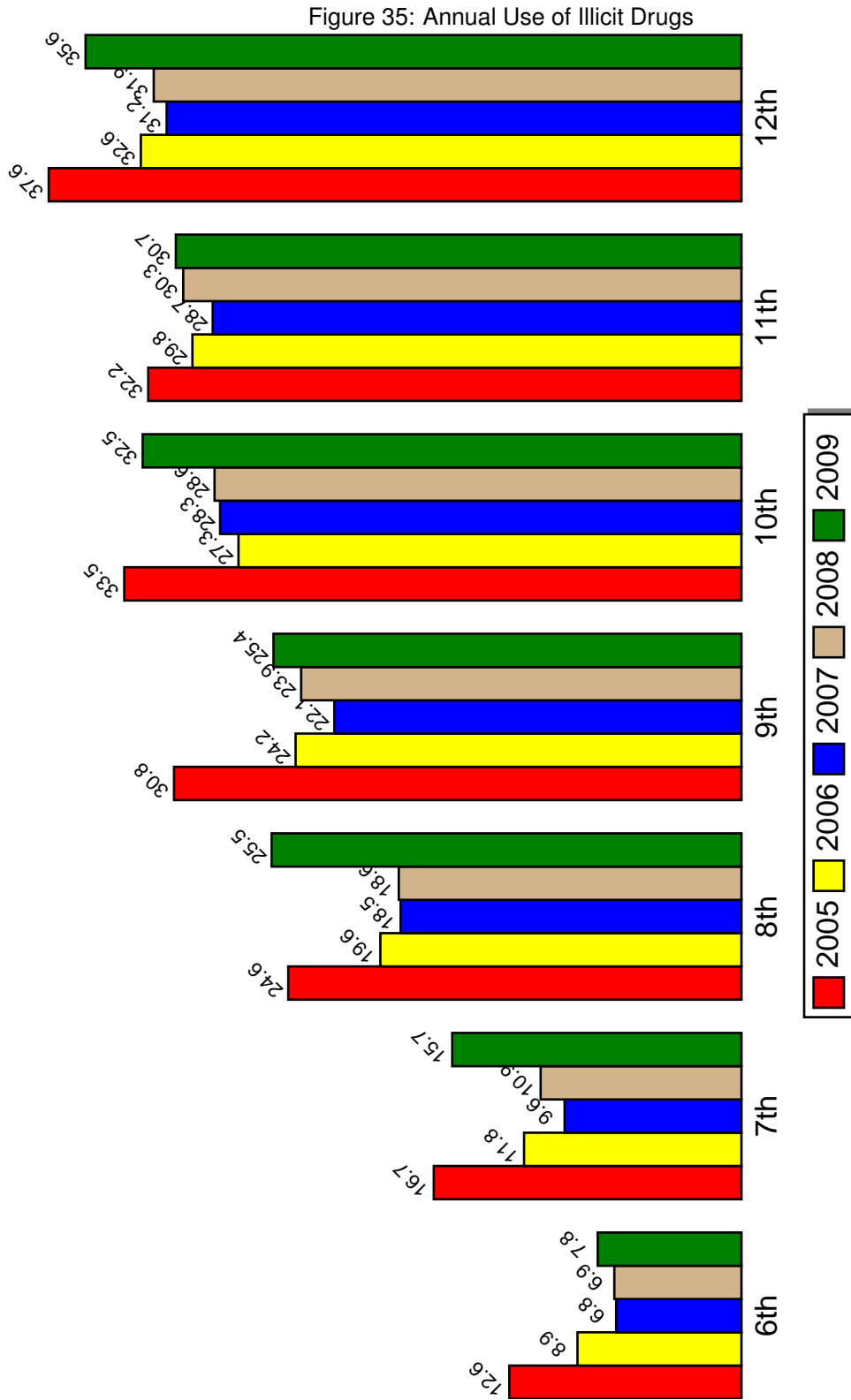
Source: PRIDE Survey

Monthly Use of Alcohol



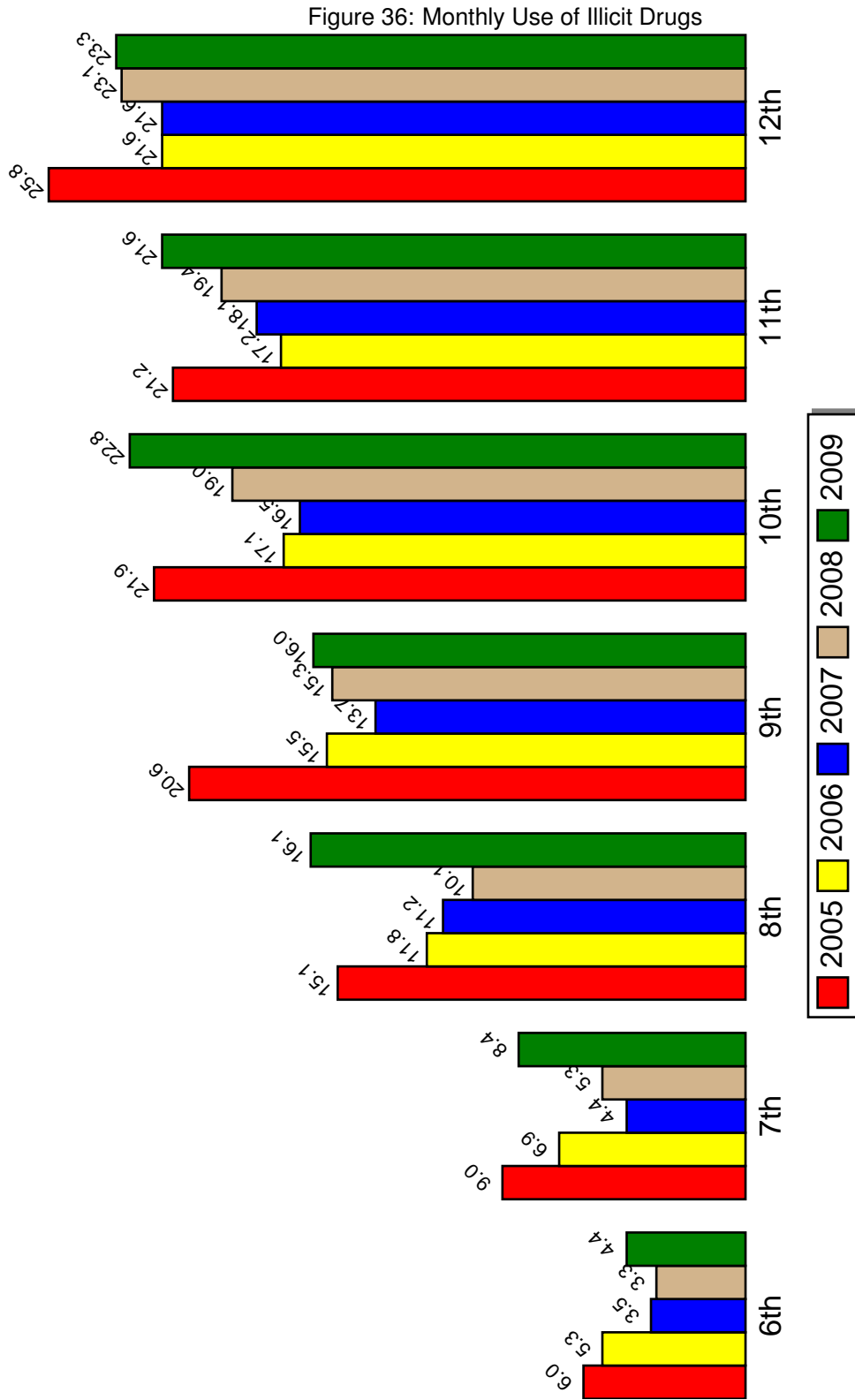
Source: PRIDE Survey

Annual Use of Illicit Drugs



Source: PRIDE Survey

# Monthly Use of Illicit Drugs

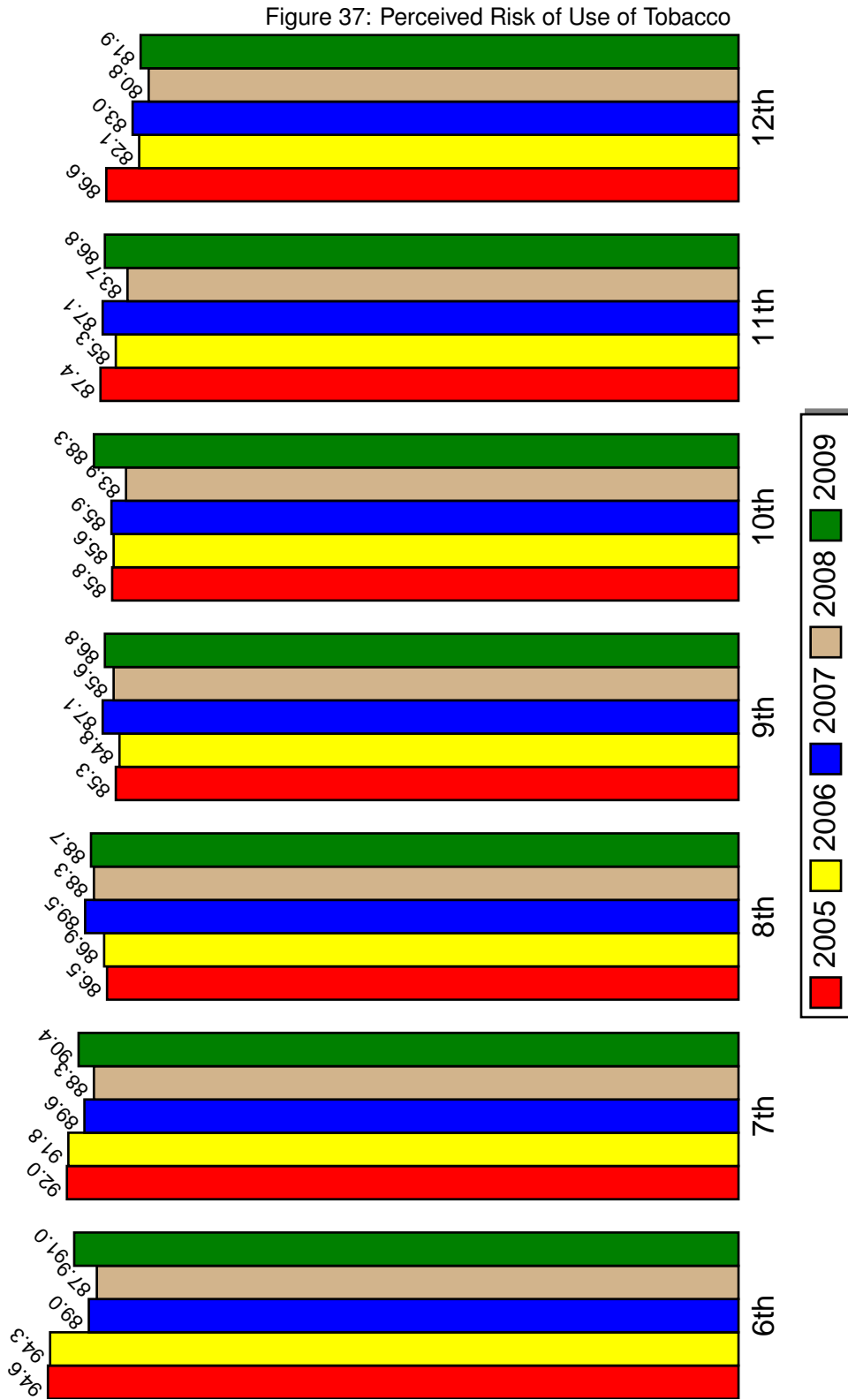


Source: PRIDE Survey

## 2 Perceived Risk of Use

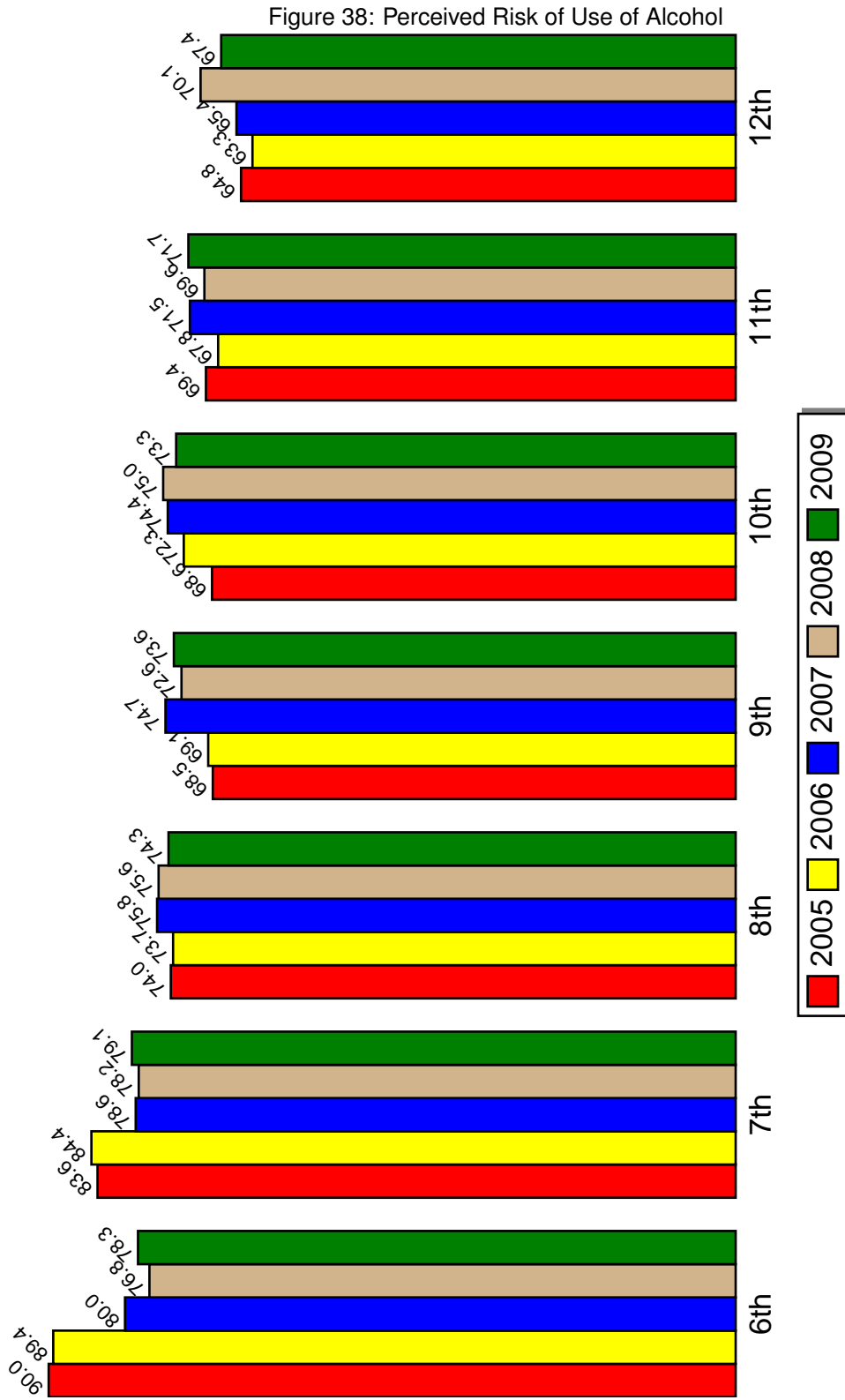
The second set of graphs present data on the perceived risk of drugs. Each graph presents the percent of students who report a particular drug as being *Harmful* or *Very Harmful* to get. *Note: For alcohol the graph presents the percent of students who report regular use of alcohol as being a Moderate Risk or Great Risk.*

Perceived Risk of Use of Tobacco



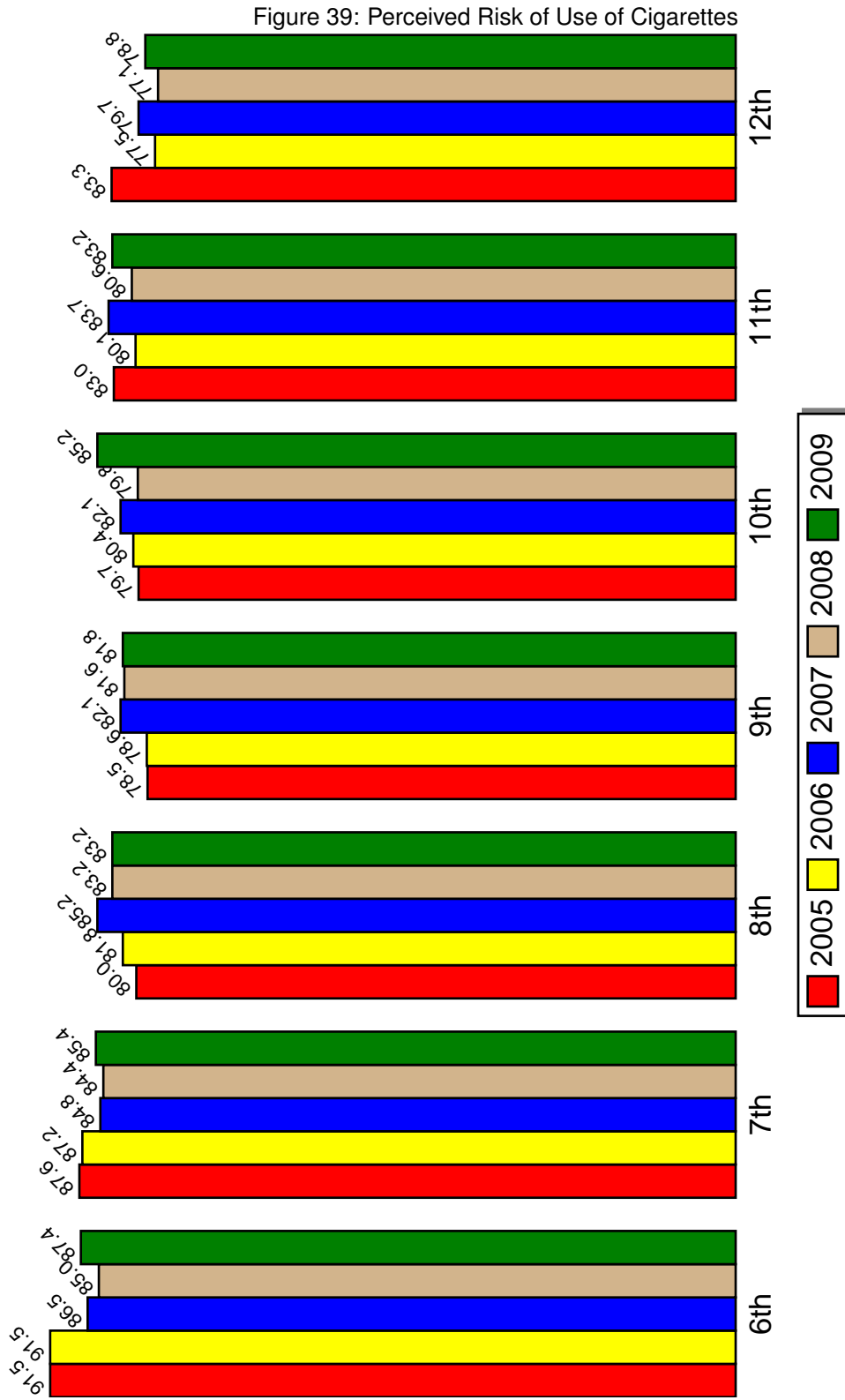
Source: PRIDE Survey

Perceived Risk of Use of Alcohol



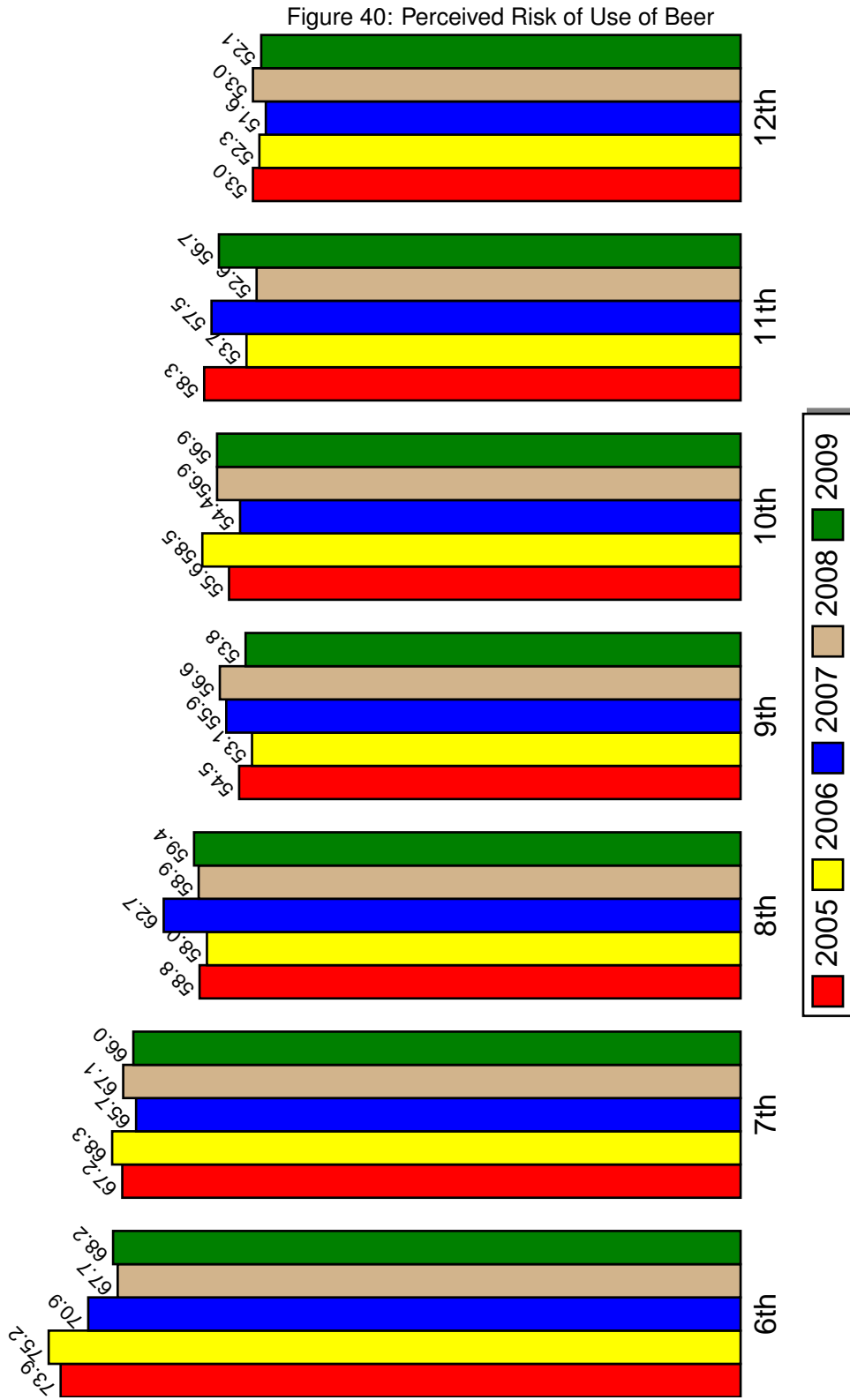
Source: PRIDE Survey

Perceived Risk of Use of Cigarettes



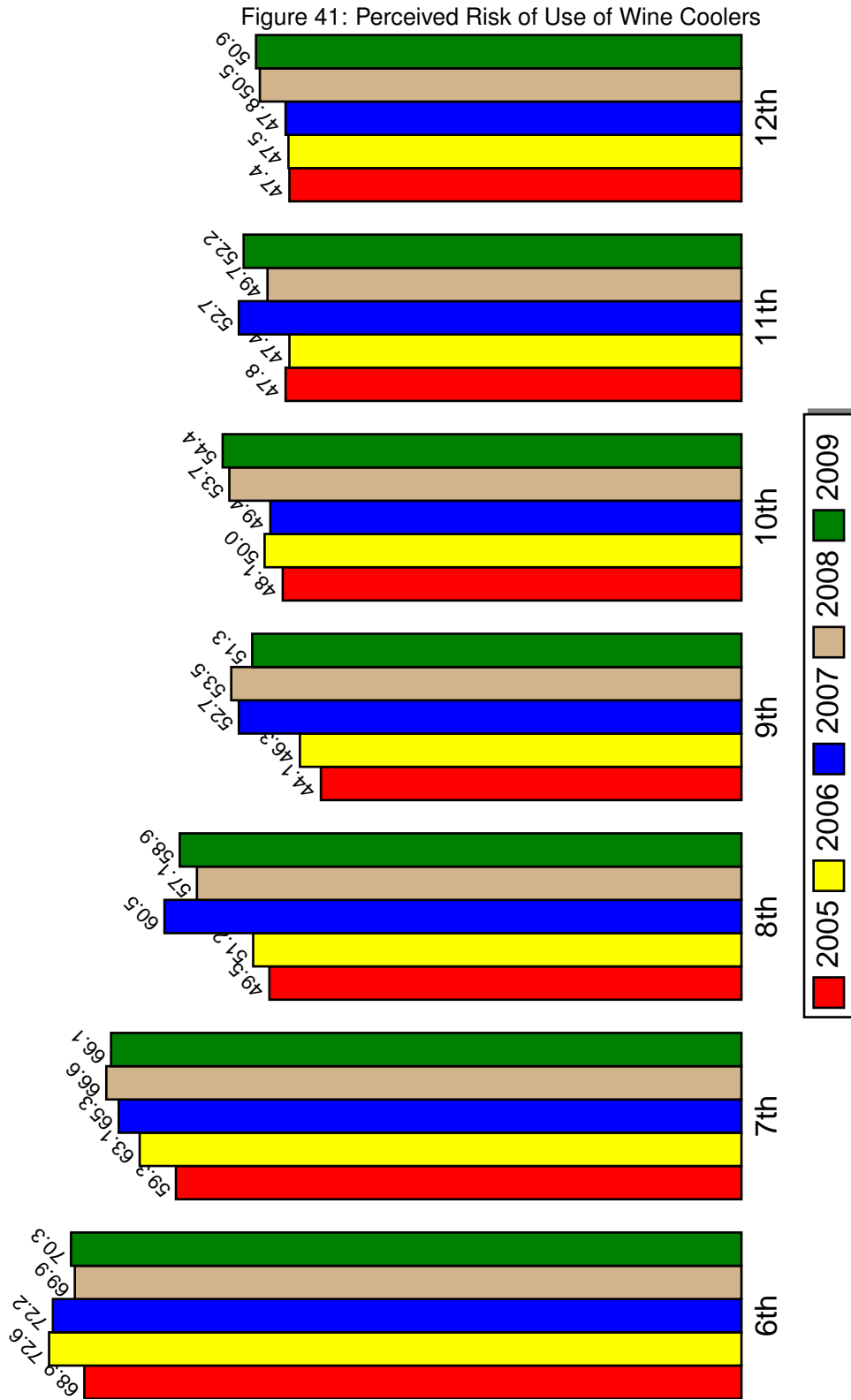
Source: PRIDE Survey

Perceived Risk of Use of Beer



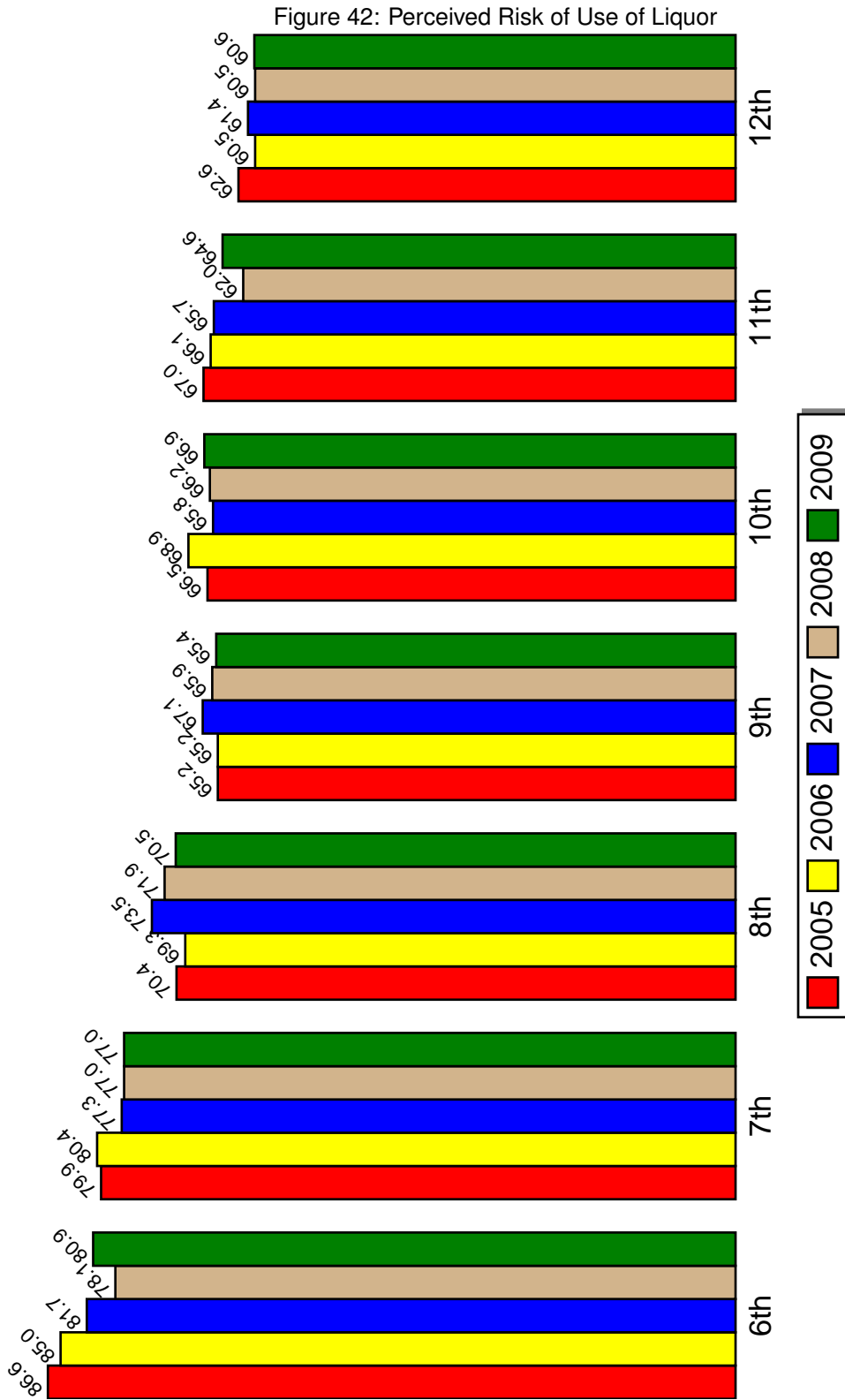
Source: PRIDE Survey

Perceived Risk of Use of Wine Coolers



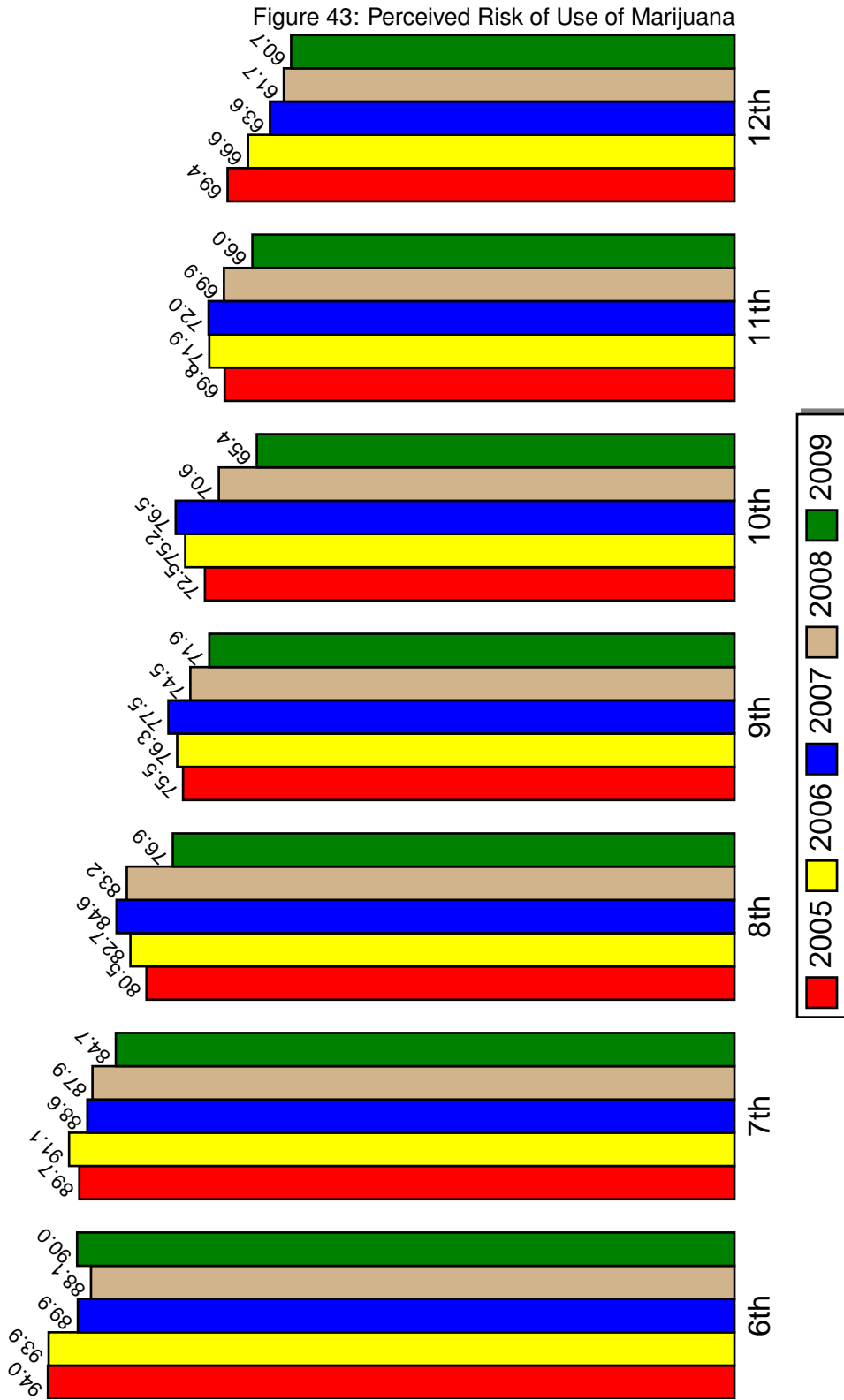
Source: PRIDE Survey

Perceived Risk of Use of Liquor



Source: PRIDE Survey

Perceived Risk of Use of Marijuana



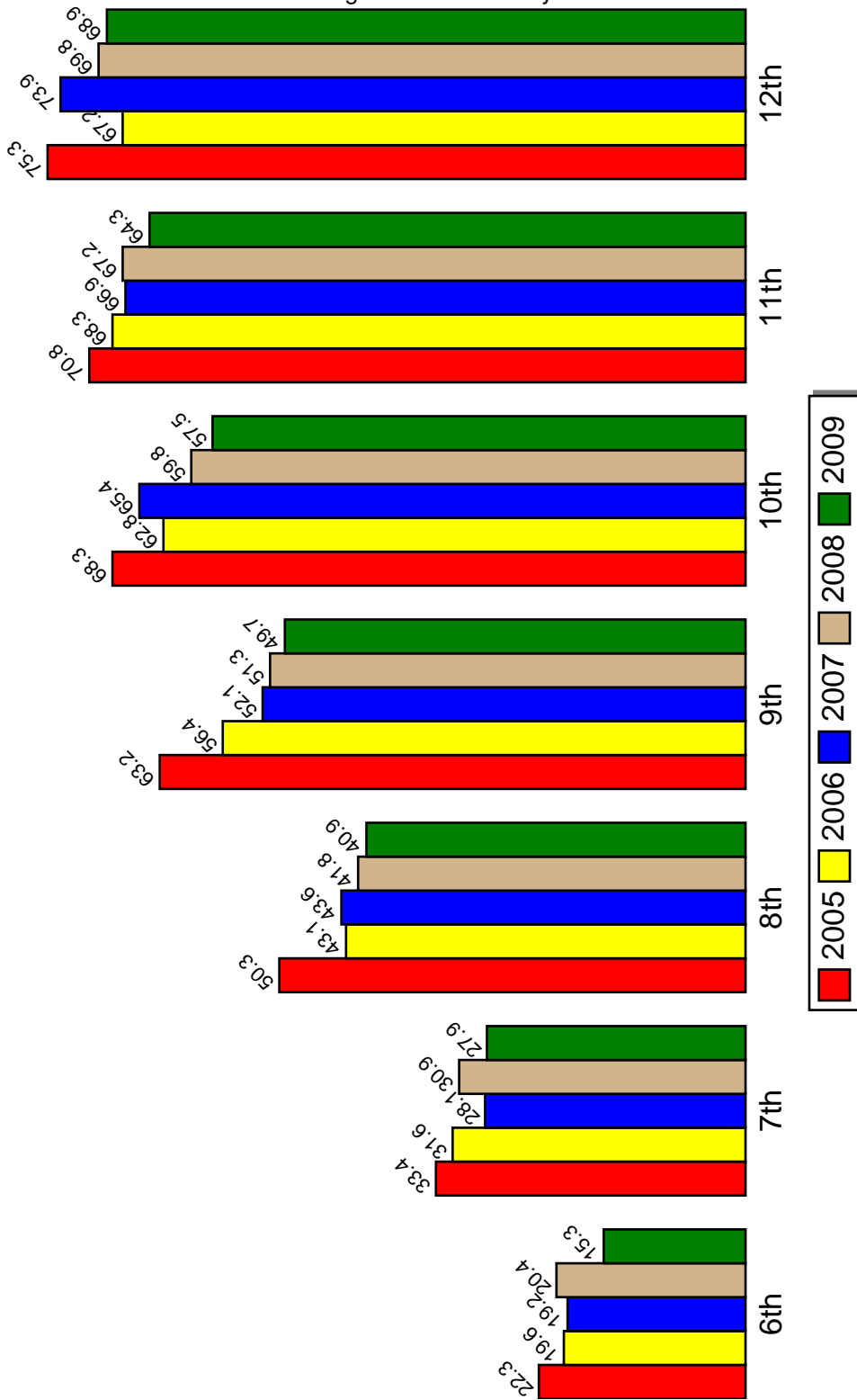
Source: PRIDE Survey

### **3 Availability Across Years**

The third set of graphs present data on the availability of drugs. Each graph presents the percent of students who report a drug as being *Fairly Easy* or *Very Easy* to get.

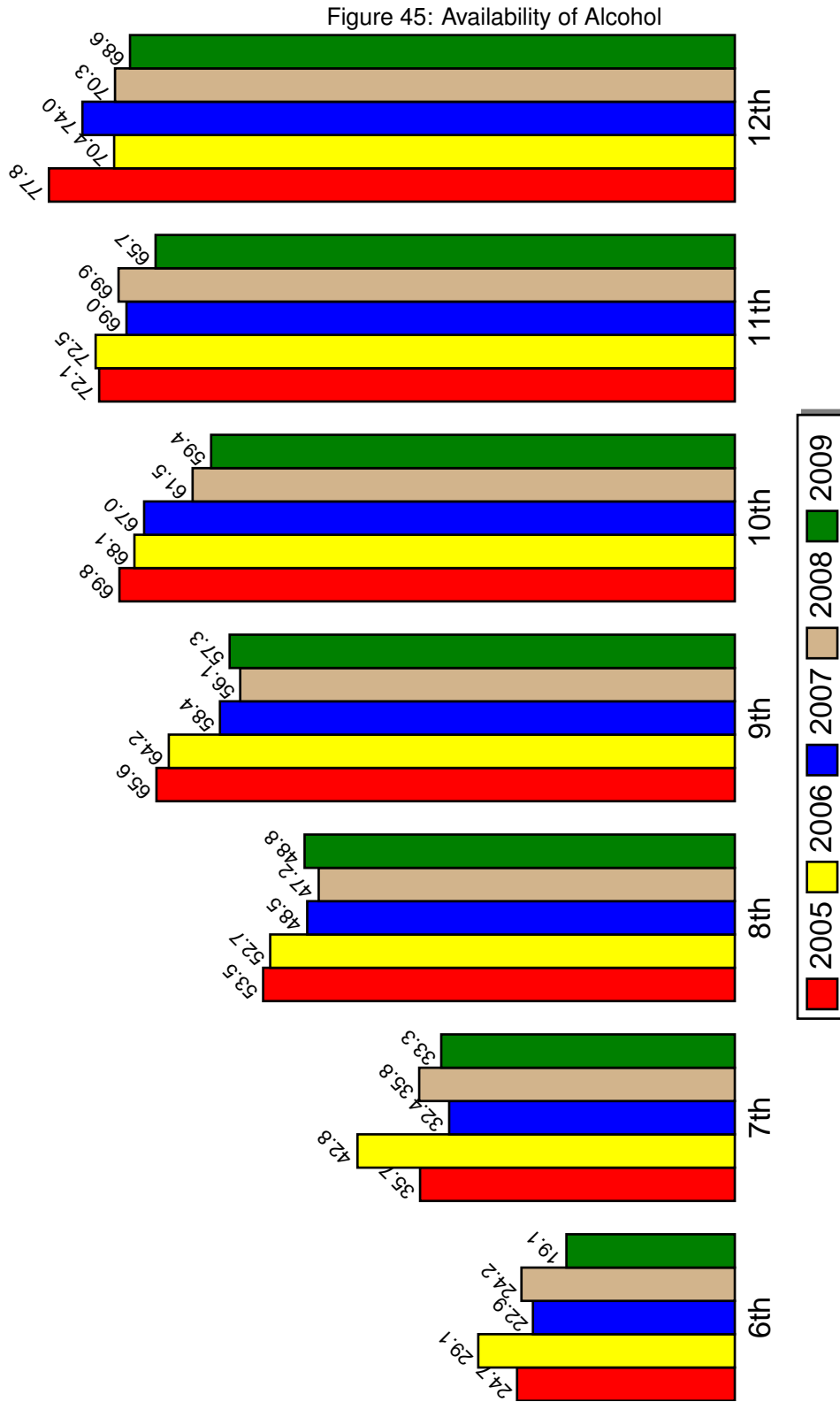
Availability of Tobacco

Figure 44: Availability of Tobacco



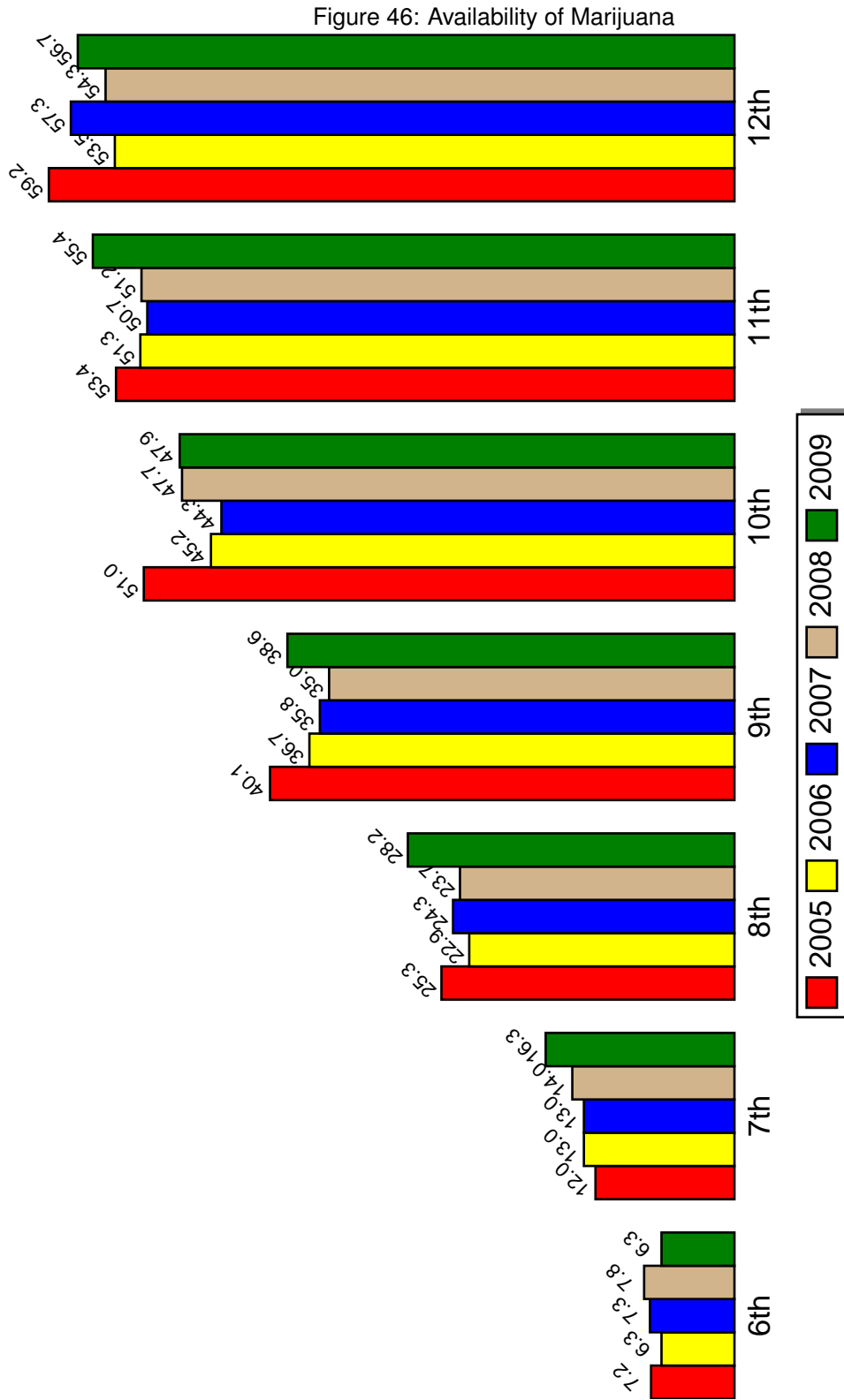
Source: PRIDE Survey

# Availability of Alcohol



Source: PRIDE Survey

Availability of Marijuana



Source: PRIDE Survey