

Executive Summary
Fairhope High School
Baldwin County, AL



June 10, 2010

Contents

1	Introduction	1
2	Demographics	2
3	Prevalence of Drug Use	2
4	Students' Perception of Risk	3
5	Students' Perception of Disapproval	6
6	Age of First Use	10
7	Students' Perception of Availability	11
8	Violence Indicators	13
9	Where Students Use	14
10	When Students Use	15
11	School Safety	17
12	Risk and Protective Factors	18
13	The Pride Surveys Questionnaire	20
14	Why Schools Use Pride Surveys	21

1 Introduction

We at PRIDE Surveys have reviewed the education legislation, No Child Left Behind (NCLB), and attended meetings in Washington, D.C., with USDOE for briefings on the legislation. This summary and the complete report on your CD-ROM are intended to assist you in meeting the requirements of NCLB.

Under the NCLB, schools are required to establish a Uniform Management and Information Reporting System. The collected data, from *anonymous student surveys*, shall include:

"...the incidence and prevalence, age of onset, perception of social disapproval of drug use and violence by youth in schools and communities".

The graphs and tables in this summary are compiled from data collected in your school(s) using the ***Pride Surveys Questionnaire for Grades 6-12***. These graphs and tables cover the areas typically of most interest for school systems. The areas covered are demographics, prevalence of use, perception of risk, students' perception of parental and peer disapproval, age of first use, violence indicators, where and when students use drugs, school and community safety, and risk and protective factors. The drugs covered in this summary are *any tobacco* use, *any alcohol* use, and *any marijuana* use during the past year. Marijuana is typically used as a measure of illicit drug use as it is by far the most commonly used of the illicit drugs.

This summary and the accompanying CD-ROM (full report) will assist you in meeting the requirements of NCLB and requirements from agencies that have similar requirements in assessment and evaluation.

NOTE: THIS IS ONLY A BRIEF SUMMARY OF YOUR RESULTS. YOUR FULL AND COMPLETE REPORT CAN BE FOUND ON YOUR CD-ROM.

If you have questions about this report or if you wish to have information on other ***Pride Surveys*** services and products, please call the ***Pride Surveys*** Office or write to the following address:

Pride Surveys

Janie Pitcock

160 Vanderbilt Court

Bowling Green, KY 42103

1-800-279-6361

1-270-746-9596

E-Mail: janie.pitcock@pridesurveys.com

Web Site: www.pridesurveys.com

2 Demographics

Total number of students surveyed: **1,049**

- Number of 9th grade students surveyed: **326 (31.1%)**
- Number of 10th grade students surveyed: **286 (27.3%)**
- Number of 11th grade students surveyed: **249 (23.7%)**
- Number of 12th grade students surveyed: **188 (17.9%)**

3 Prevalence of Drug Use

NOTE: For tables, *N of Valid* is the number of students who answered the question and *N of Missing* is the number of students who did not answer the question.

% Students Who Use Tobacco, Alcohol & Marijuana
(Past Year)

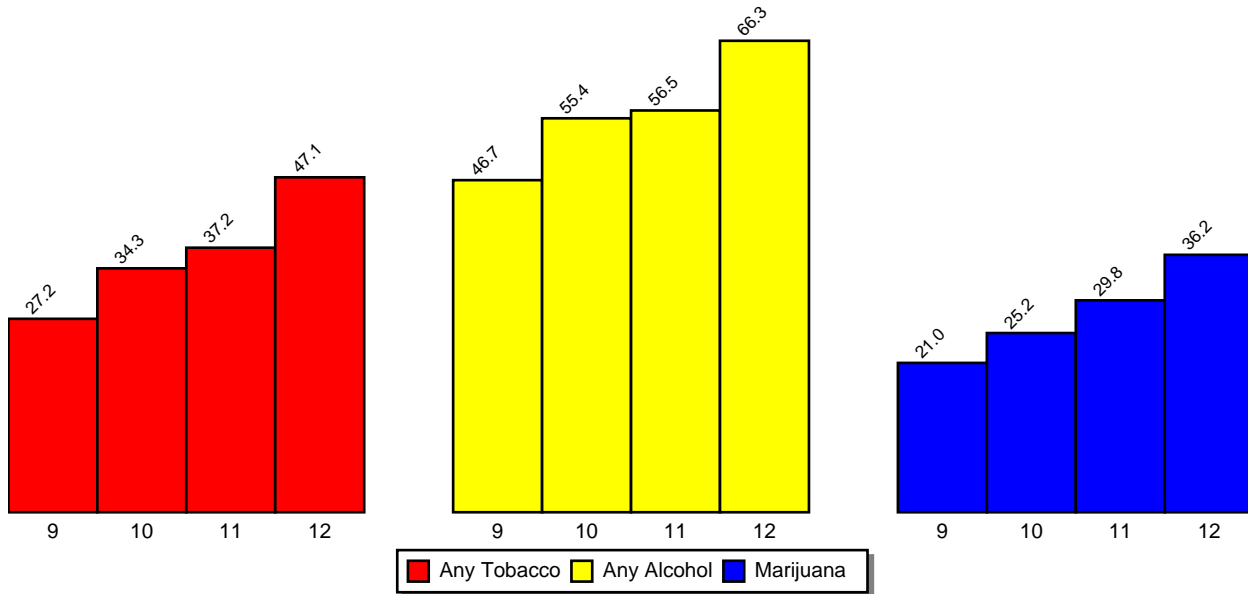


Table 1: Frequency of Use – Any Tobacco?

Grade Level	N of Valid	N of Miss	Daily	Weekly	Monthly	Annual
9th	324	2	8.0	13.6	17.6	27.2
10th	280	6	7.1	14.3	22.1	34.3
11th	247	2	13.0	19.0	25.1	37.2
12th	187	1	14.4	25.1	31.6	47.1
9-12	1038	11	10.1	17.1	23.1	35.1
Total	1038	11	10.1	17.1	23.1	35.1

Table 2: Frequency of Use – Any **Alcohol**?

Grade Level	N of Valid	N of Miss	Daily	Weekly	Monthly	Annual
9th	323	3	2.8	9.6	22.0	46.7
10th	280	6	2.9	13.9	27.1	55.4
11th	246	3	3.3	19.1	32.5	56.5
12th	187	1	4.8	21.9	45.5	66.3
9-12	1036	13	3.3	15.3	30.1	54.9
Total	1036	13	3.3	15.3	30.1	54.9

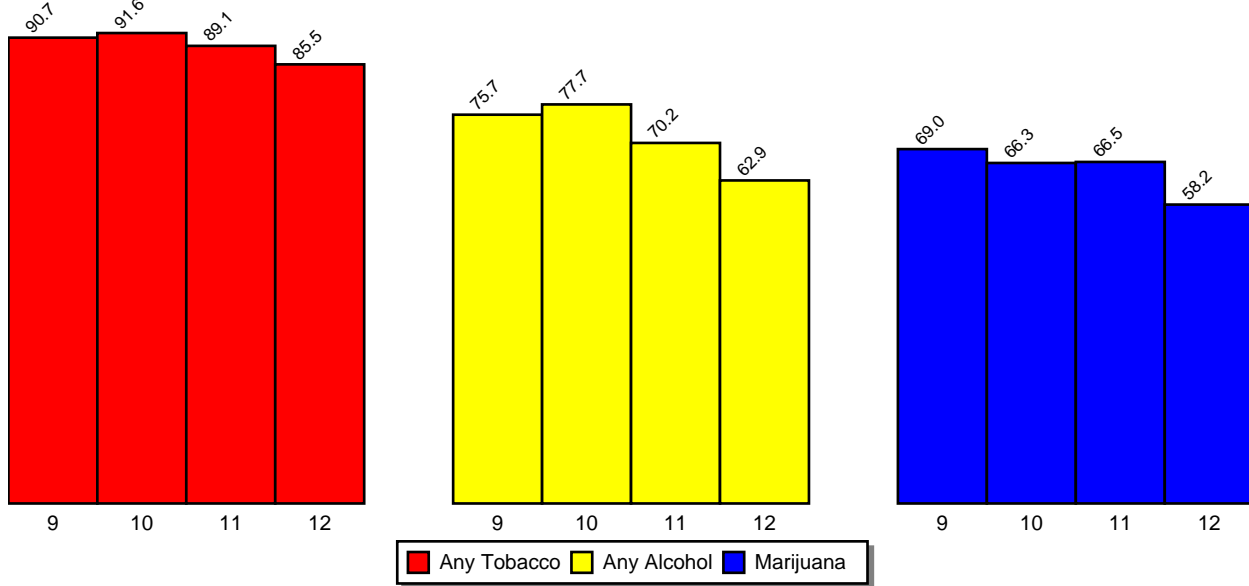
Table 3: Frequency of Use – Any **Marijuana**?

Grade Level	N of Valid	N of Miss	Daily	Weekly	Monthly	Annual
9th	324	2	5.2	9.0	12.7	21.0
10th	278	8	6.1	12.6	16.9	25.2
11th	245	4	7.8	13.5	20.4	29.8
12th	185	3	10.3	17.8	22.7	36.2
9-12	1032	17	7.0	12.6	17.4	26.9
Total	1032	17	7.0	12.6	17.4	26.9

4 Students' Perception of Risk

Students are asked about their perception of risk of any use of various drugs with the possible responses being *No Harm*, *Some Harm*, *Harmful* or *Very Harmful*. Past analysis of national statistics indicates that as students' perception of risk increases, use of substances decreases. It is also typical for the perception of risk (*Harmful* or *Very Harmful*) to decrease as a child gets older. (Note: In order to comply with federal guidelines an additional question was added to the questionnaire regarding use of alcohol on a regular basis. Responses to this questions are analogous with the other harm questions and include *No Risk*, *Slight Risk*, *Moderate Risk* and *Great Risk*. Harm questions regarding alcohol are based on the new question and report the percentage of students who regard regular alcohol use as *Moderate Risk* or *Great Risk*. Your students' responses are detailed in the following tables.

% Students Who Perceive Tobacco, Alcohol & Marijuana As Harmful Or Very Harmful*



*Alcohol responses are Moderate Risk or Great Risk. Source: Pride Surveys

Table 4: Students' Perception of Risk of Tobacco

Grade Level	N of Valid	N of Miss	Harmful or Very Harmful
9th	323	3	90.7
10th	285	1	91.6
11th	248	1	89.1
12th	186	2	85.5
9-12	1042	7	89.6
Total	1042	7	89.6

Table 5: Students' Perception of Risk of Alcohol

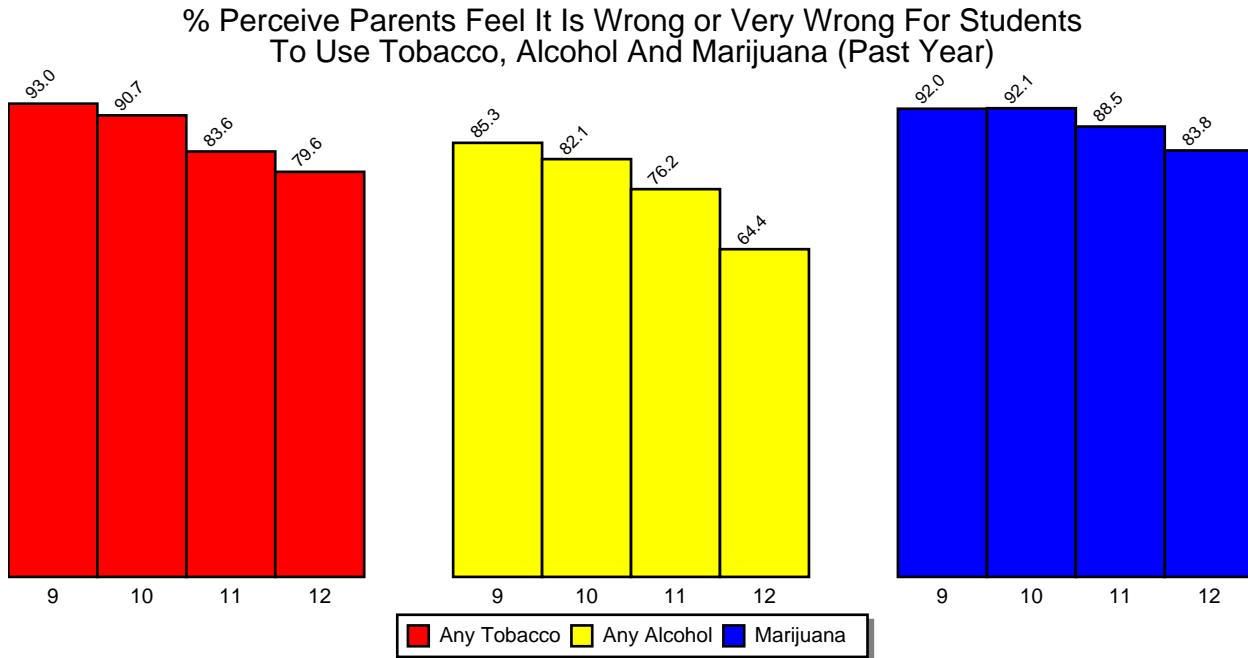
Grade Level	N of Valid	N of Miss	Moderate or Great Risk
9th	317	9	75.7
10th	273	13	77.7
11th	242	7	70.2
12th	178	10	62.9
9-12	1010	39	72.7
Total	1010	39	72.7

Table 6: Students' Perception of Risk of **Marijuana**

Grade Level	N of Valid	N of Miss	Harmful or Very Harmful
9th	323	3	69.0
10th	285	1	66.3
11th	245	4	66.5
12th	184	4	58.2
9-12	1037	12	65.8
Total	1037	12	65.8

5 Students' Perception of Disapproval

Past analysis of national statistics indicates that the majority of students tend to perceive parents as feeling it is *Wrong* or *Very Wrong* for students to use tobacco, alcohol and marijuana for all grade levels. Your students' responses are detailed in the following tables.



Source: Pride Surveys

Table 7: Students' Perception Of **Parents'** Disapproval Of Use of **Tobacco**

Grade Level	N of Valid	N of Miss	Wrong or Very Wrong
9th	315	11	93.0
10th	279	7	90.7
11th	244	5	83.6
12th	181	7	79.6
9-12	1019	30	87.7
Total	1019	30	87.7

Table 8: Students' Perception Of **Parents'** Disapproval Of Use of **Alcohol**

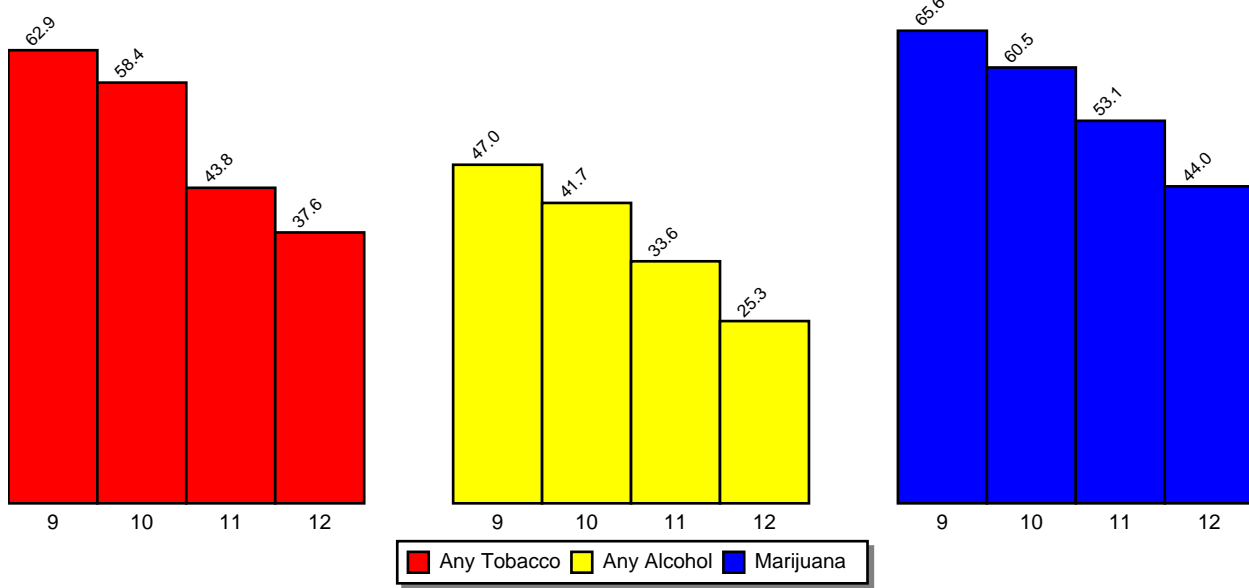
Grade Level	N of Valid	N of Miss	Wrong or Very Wrong
9th	312	14	85.3
10th	279	7	82.1
11th	244	5	76.2
12th	180	8	64.4
9-12	1015	34	78.5
Total	1015	34	78.5

Table 9: Students' Perception Of **Parents'** Disapproval Of Use of **Marijuana**

Grade Level	N of Valid	N of Miss	Wrong or Very Wrong
9th	313	13	92.0
10th	277	9	92.1
11th	244	5	88.5
12th	179	9	83.8
9-12	1013	36	89.7
Total	1013	36	89.7

Typically, students perceive a decreasing amount of disapproval from their friends as they grow older. This is helpful in understanding peer pressure. The following tables detail your students' responses to their friends' disapproval.

% Perceive Friends Feel It Is Wrong or Very Wrong For Students To Use Tobacco, Alcohol And Marijuana (Past Year)



Source: Pride Surveys

Table 10: Students' Perception of Friends' Disapproval of Use of Tobacco

Grade Level	N of Valid	N of Miss	Wrong or Very Wrong
9th	313	13	62.9
10th	279	7	58.4
11th	240	9	43.8
12th	178	10	37.6
9-12	1010	39	52.7
Total	1010	39	52.7

Table 11: Students' Perception of Friends' Disapproval of Use of Alcohol

Grade Level	N of Valid	N of Miss	Wrong or Very Wrong
9th	313	13	47.0
10th	278	8	41.7
11th	241	8	33.6
12th	178	10	25.3
9-12	1010	39	38.5
Total	1010	39	38.5

Table 12: Students' Perception of **Friends'** Disapproval of Use of **Marijuana**

Grade Level	N of Valid	N of Miss	Wrong or Very Wrong
9th	314	12	65.6
10th	276	10	60.5
11th	241	8	53.1
12th	175	13	44.0
9-12	1006	43	57.5
Total	1006	43	57.5

6 Age of First Use

The question *At what age did you first use...* is used to measure this statistic. The possible responses to this question range from *8 or Under* to *17 or Older*. The table shows the age range that represents the average category score for this question of those students who answered the question with a response other than *Never Used*.

Table 13: When did you first use any **tobacco**?

Grade Level	N of Valid	N of Miss	Avg Age
9th	96	230	12.625
10th	106	180	13.528
11th	98	151	13.480
12th	95	93	14.274
9-12	395	654	13.476
Total	395	654	13.476

Table 14: When did you first use any **alcohol**?

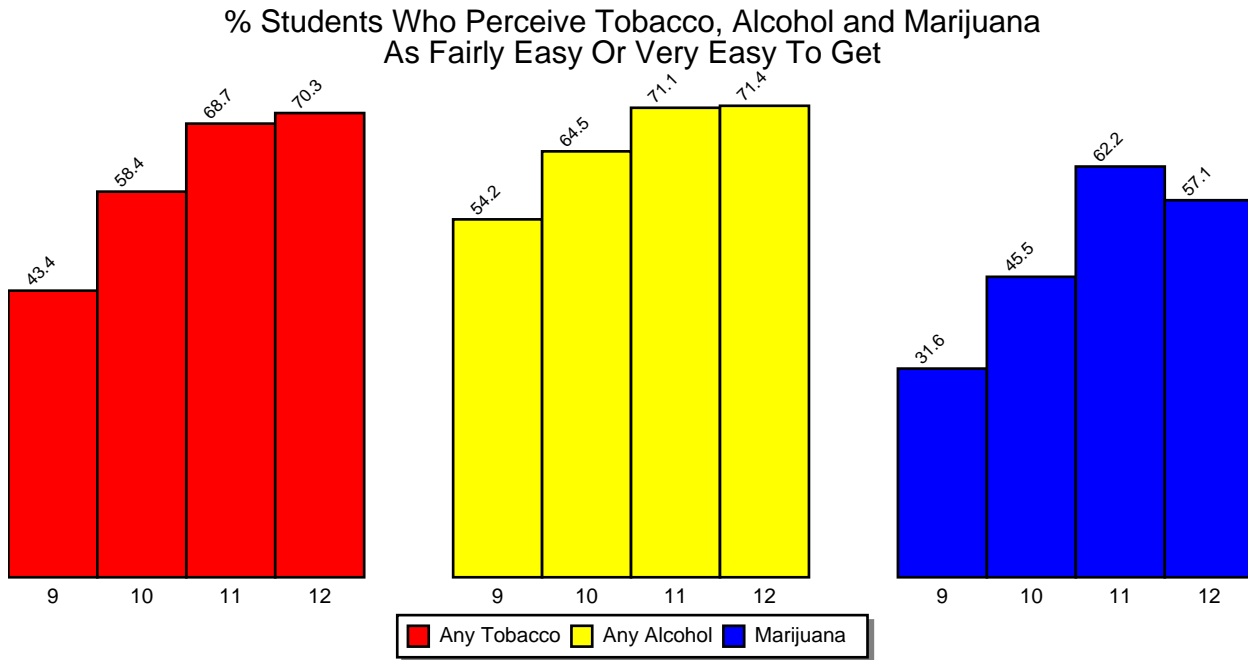
Grade Level	N of Valid	N of Miss	Avg Age
9th	150	176	12.627
10th	163	123	13.485
11th	149	100	13.879
12th	128	60	14.094
9-12	590	459	13.498
Total	590	459	13.498

Table 15: When did you first use any **marijuana**?

Grade Level	N of Valid	N of Miss	Avg Age
9th	71	255	13.113
10th	74	212	14.095
11th	86	163	14.605
12th	73	115	14.507
9-12	304	745	14.109
Total	304	745	14.109

7 Students' Perception of Availability

Past analysis of national statistics indicates that as students get older a larger percentage of them tend to perceive tobacco, alcohol and marijuana as *Fairly Easy* or *Very Easy* to get. Your students' responses are detailed in the following tables.



Source: Pride Surveys

Table 16: Students' Perception of Availability of **Tobacco**

Grade Level	N of Valid	N of Miss	Fairly Easy or Very Easy to Get
9th	320	6	43.4
10th	279	7	58.4
11th	246	3	68.7
12th	182	6	70.3
9-12	1027	22	58.3
Total	1027	22	58.3

Table 17: Students' Perception of Availability of **Alcohol**

Grade Level	N of Valid	N of Miss	Fairly Easy or Very Easy to Get
9th	319	7	54.2
10th	279	7	64.5
11th	246	3	71.1
12th	182	6	71.4
9-12	1026	23	64.1
Total	1026	23	64.1

Table 18: Students' Perception of Availability of **Marijuana**

Grade Level	N of Valid	N of Miss	Fairly Easy or Very Easy to Get
9th	320	6	31.6
10th	279	7	45.5
11th	246	3	62.2
12th	182	6	57.1
9-12	1027	22	47.2
Total	1027	22	47.2

8 Violence Indicators

Except where noted by an '**', the following table lists the percentage of students who made any positive response to the following questions.

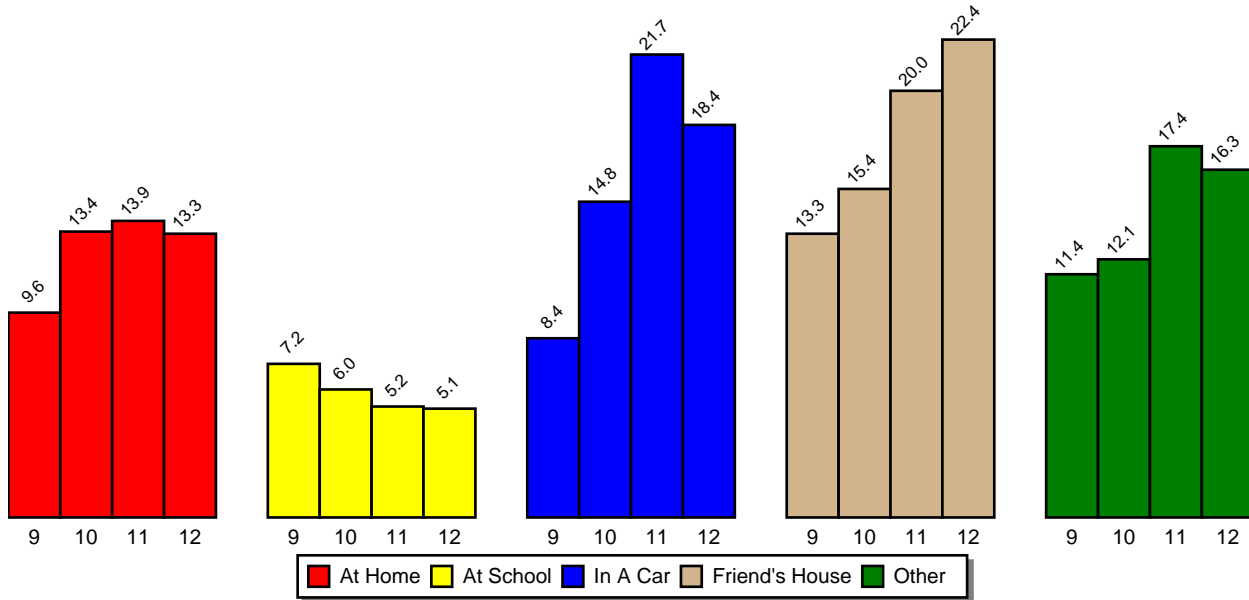
Table 19: Violence Indicators

Violence Indicator	Num	Pct
Get into trouble with police	296	28.5%
Threatened a fellow student	282	27.5%
Being afraid at school	132	12.9%
Being hurt at school	111	10.8%
Participated in gangs	90	8.6%
Thought <i>often</i> or <i>a lot</i> about suicide*	64	6.2%

9 Where Students Use

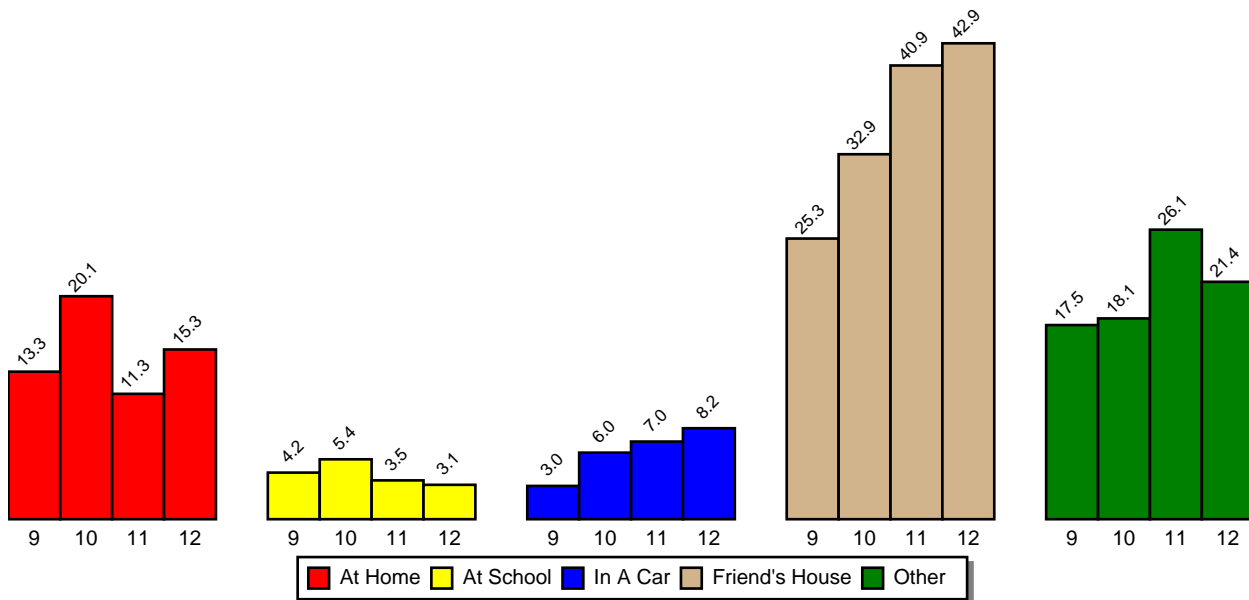
The following graphs show where students report using tobacco, alcohol and marijuana. Past analysis of national statistics show that *At School* is typically the *least* popular place of use.

Where Do You Use Any Tobacco



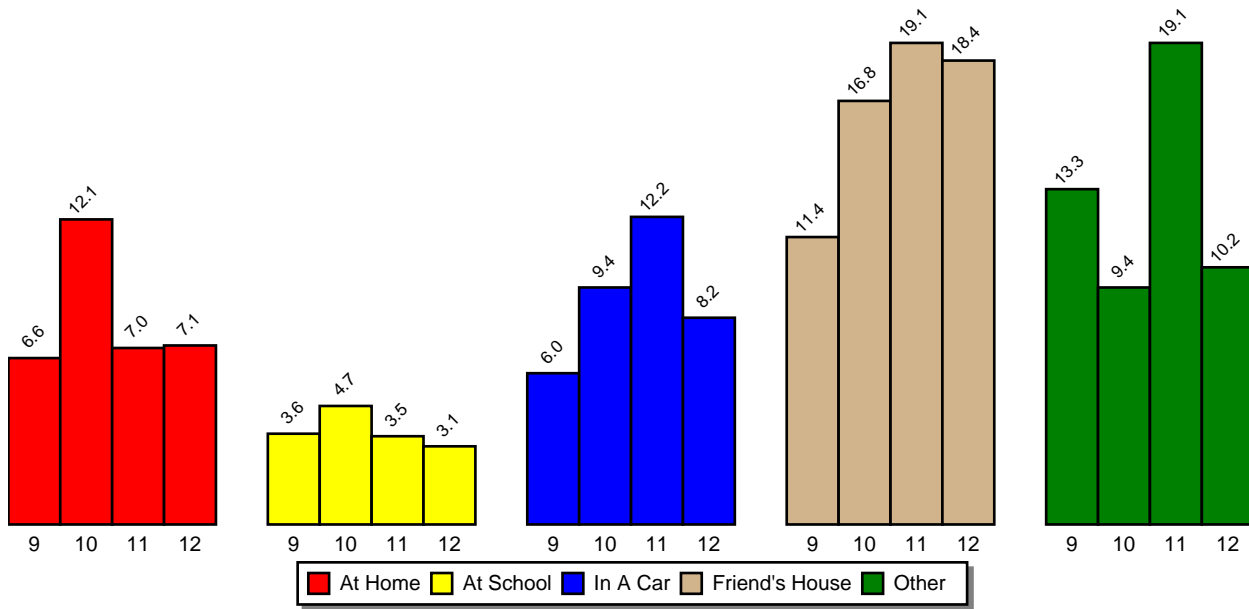
Source: Pride Surveys

Where Do You Use Any Alcohol



Source: Pride Surveys

Where Do You Use Marijuana

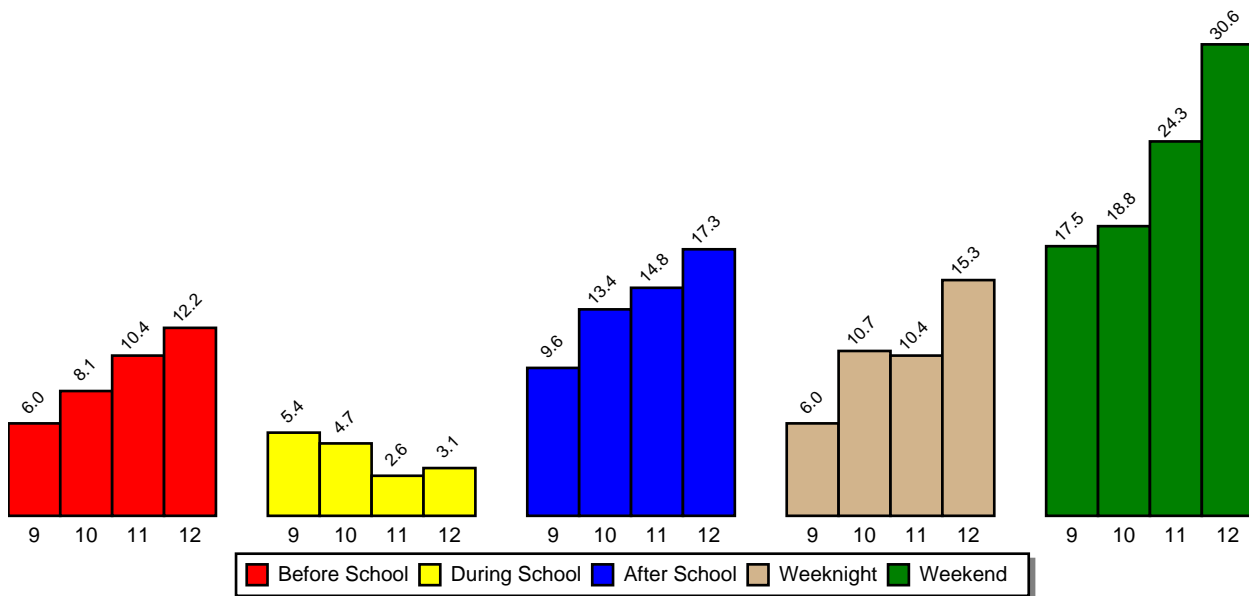


Source: Pride Surveys

10 When Students Use

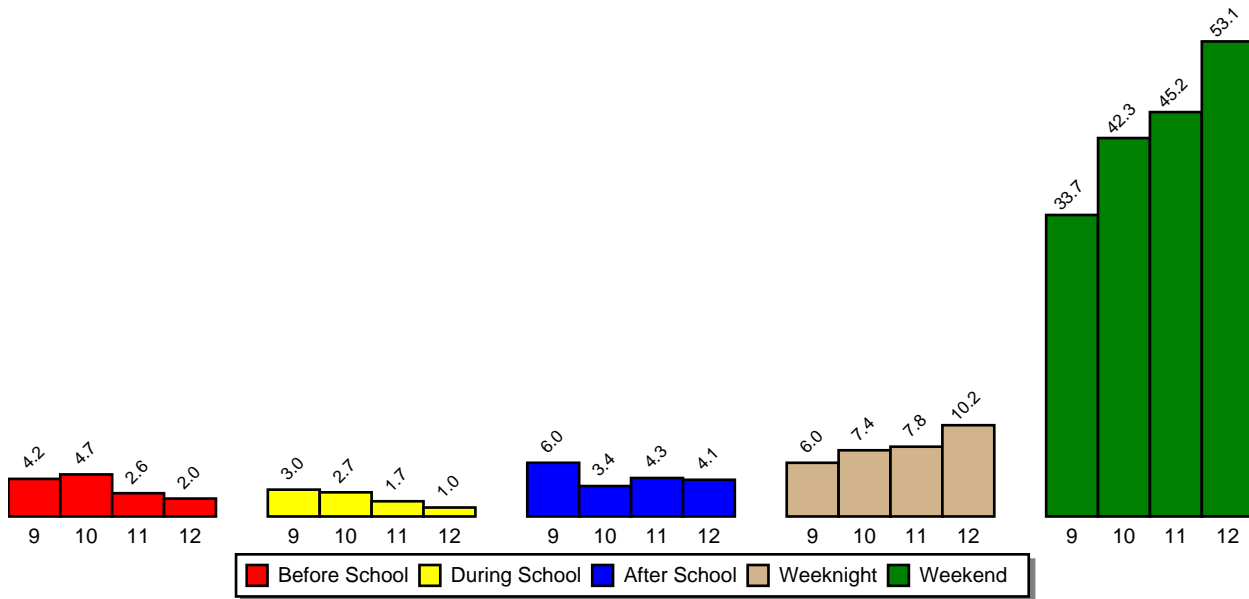
The following graphs show when students report using tobacco, alcohol and marijuana. Past analysis of national statistics show that *During School* is typically the *least* popular time of use.

When Do You Use Any Tobacco



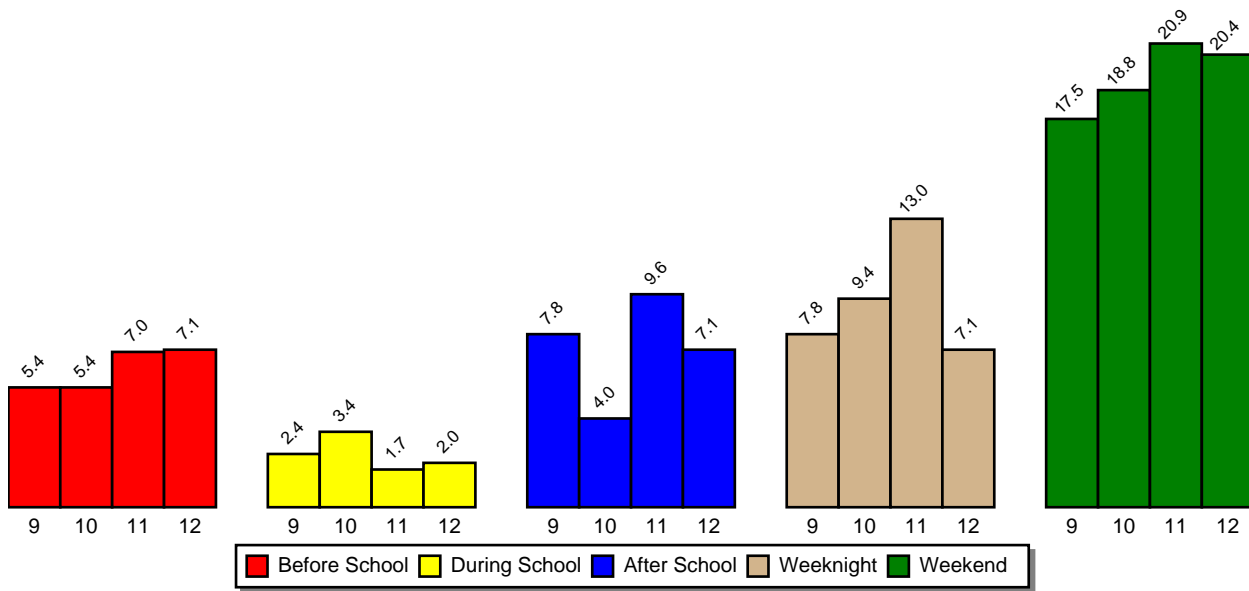
Source: Pride Surveys

When Do You Use Any Alcohol



Source: Pride Surveys

When Do You Use Marijuana



Source: Pride Surveys

11 School Safety

The following table lists the percentage of students who responded as *Never* or *Seldom* feeling safe in the following school locations.

Table 20: School Safety

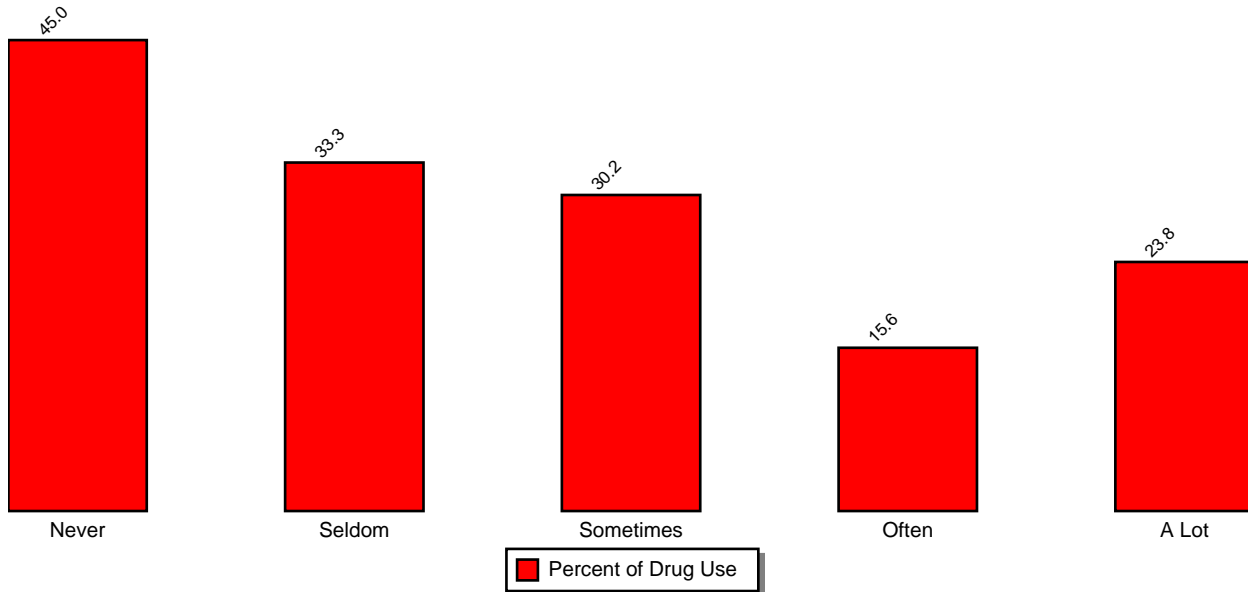
Location	Num	Pct
On the school bus	196	19.3%
In the parking lot	194	19.1%
In the bathroom	183	18.0%
On the playground	173	17.3%
In the halls	164	16.0%
In the cafeteria (lunchroom)	154	15.1%
In the gym	140	13.7%
At school events (ballgames, etc.)	138	13.6%
In the classroom	123	12.0%

*Pct represents percent who responded *Never* or *Seldom*

12 Risk and Protective Factors

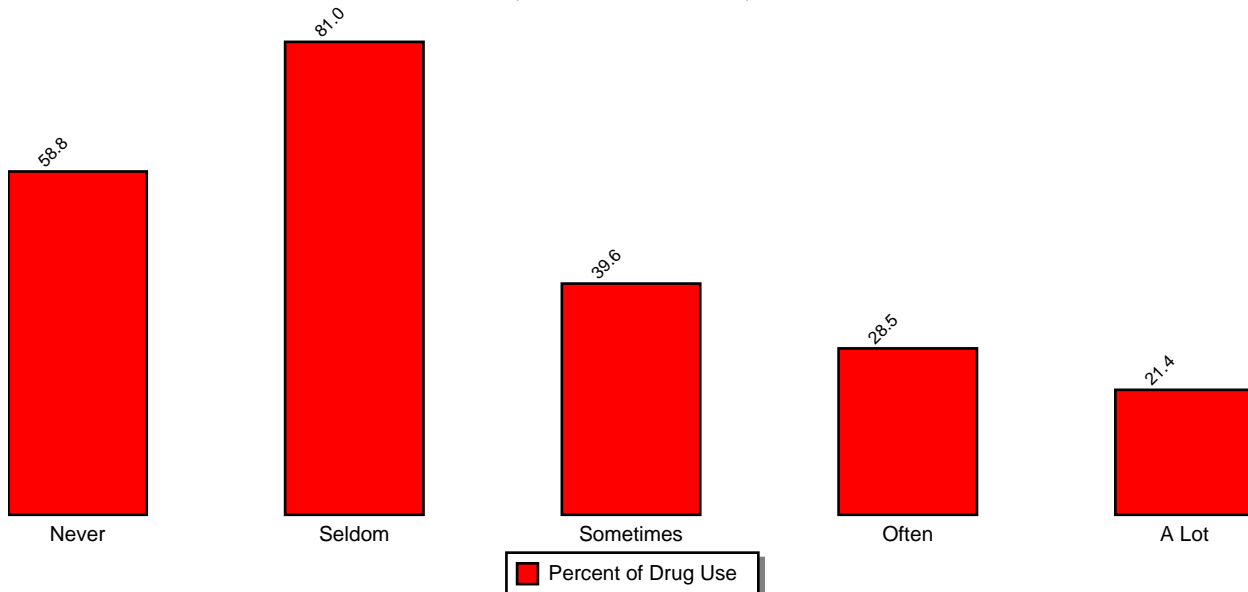
The following graphs on illicit drug use by risk & protective factors show for each category (Never, Seldom, Sometimes, Often, A Lot) of a risk or protective factor question the percentage of students who report using illicit drugs. For example, on the question of taking part in school activities, if the bar labeled NEVER was 40%, this means that OF those students who responded NEVER to taking part in school activities, 40% reported using an illicit drug.

% Students Who Use Illicit Drugs by Take Part in School Activities
(School Protective Factor)



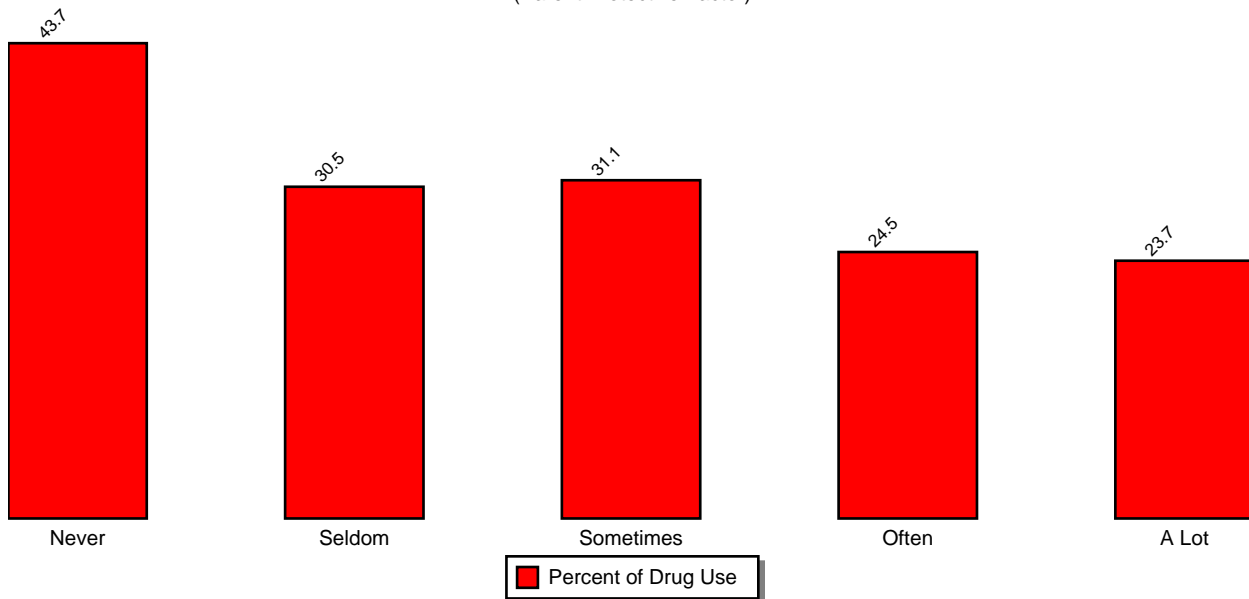
Source: Pride Surveys -- For the group of students who responded NEVER to this question, 45.0% reported using illicit drugs, for A LOT, 23.8% reported using illicit drugs

% Students Who Use Illicit Drugs by Make Good Grades
(School Protective Factor)



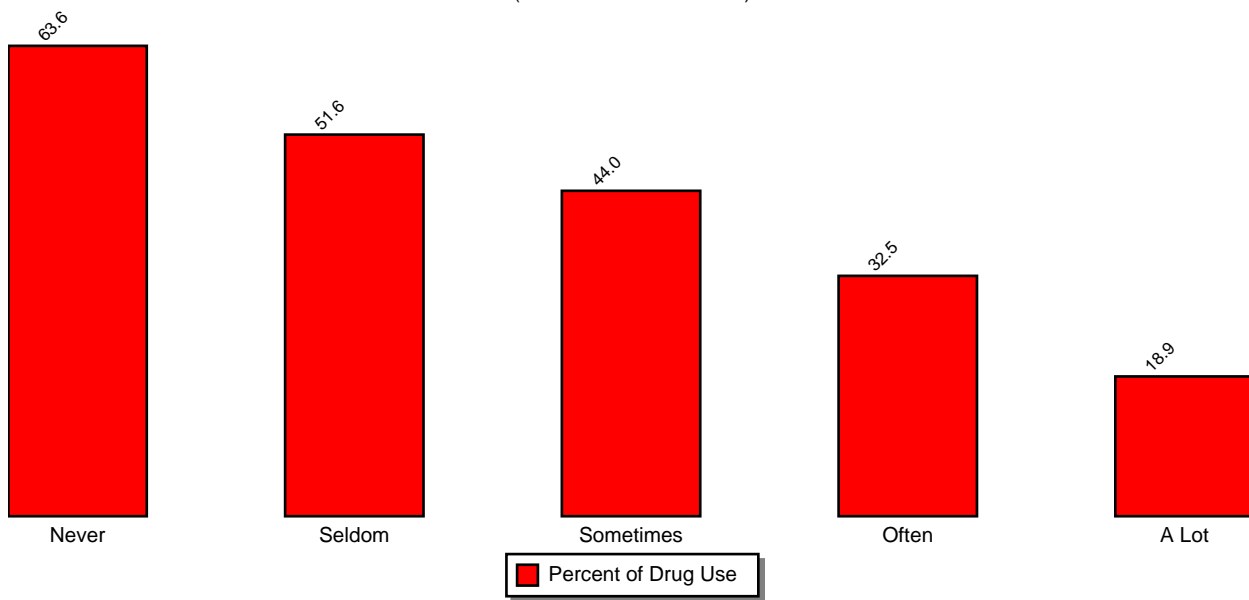
Source: Pride Surveys -- For the group of students who responded NEVER to this question, 58.8% reported using illicit drugs, for A LOT, 21.4% reported using illicit drugs

% Students Who Use Illicit Drugs by Parents Talk About Dangers of Drugs (Parent Protective Factor)



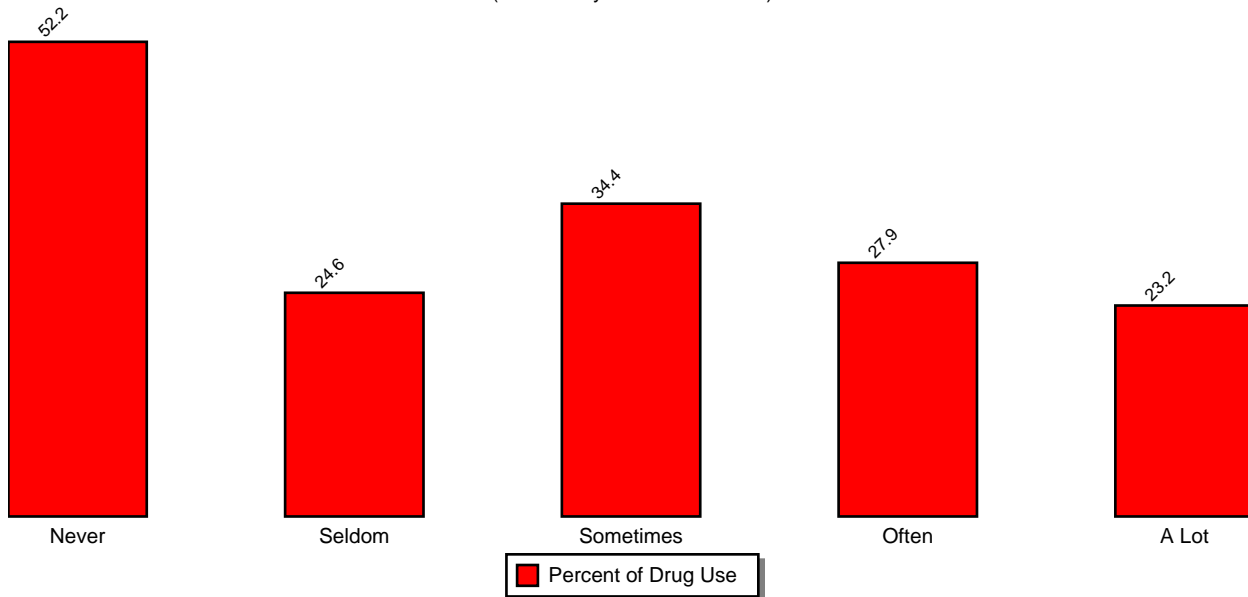
Source: Pride Surveys -- For the group of students who responded NEVER to this question, 43.7% reported using illicit drugs, for A LOT, 23.7% reported using illicit drugs

% Students Who Use Illicit Drugs by Parents Set Clear Rules (Parent Protective Factor)



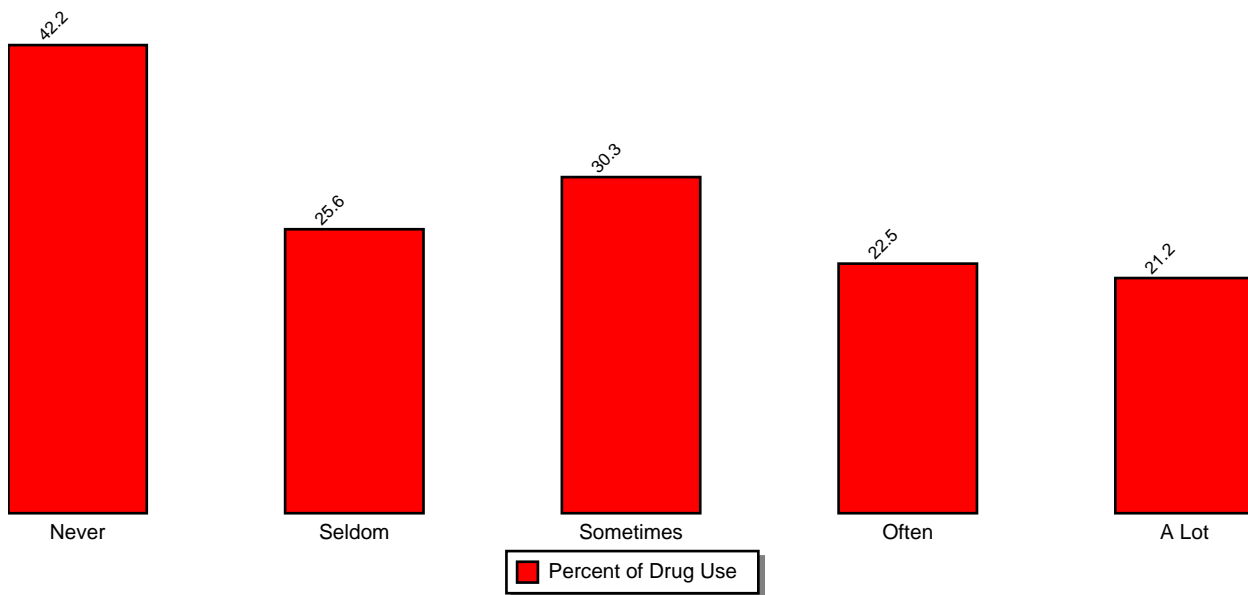
Source: Pride Surveys -- For the group of students who responded NEVER to this question, 63.6% reported using illicit drugs, for A LOT, 18.9% reported using illicit drugs

% Students Who Use Illicit Drugs by Attend Church, Synagogue, etc.
(Community Protective Factor)



Source: Pride Surveys -- For the group of students who responded NEVER to this question, 52.2% reported using illicit drugs, for A LOT, 23.2% reported using illicit drugs

% Students Who Use Illicit Drugs by Take Part in Community Activities
(Community Protective Factor)



Source: Pride Surveys -- For the group of students who responded NEVER to this question, 42.2% reported using illicit drugs, for A LOT, 21.2% reported using illicit drugs

13 The Pride Surveys Questionnaire

Since 1982, the Pride Surveys Questionnaire has been used by schools in 49 of the 50 states and several foreign countries to gather data on student tobacco, alcohol and illicit drug use and related behaviors. A decade ago we added questions on violence to explore the relationship between students who used various drugs and their violence. We now archive more than 8 million completed questionnaires, making the Pride Surveys database on student drug use and

violence the largest in the world.

Other Pride Surveys that we hope you will consider for your assessment and evaluation needs are: Faculty and Staff, Parents, and Grade 4-6. Copies of the questionnaires are available on the Pride Surveys web site www.pridesurveys.com and can be downloaded or you can call 1-800-279-6361 and we will send you copies for review.

14 Why Schools Use Pride Surveys

The following are some of the reasons school systems use Pride Surveys:

Used by more than 8,000 school systems. For more than two decades, schools across the nation have used the Pride Survey to identify student levels of drug use, violence, and related behaviors.

Designated by Federal Law as a measure of illicit drug use by youth. This law can be reviewed in Congressional Record, October 19, 1998, Page H11228. (see www.pridesurveys.com)

40-50 minutes to administer. School time is an important consideration. The survey can be administered during a portion of only one class period.

Evaluates most prevention goals and objectives. Changes in student behavior can be measured over time, allowing an individual school, system, or state to measure most of their goals and objectives.

Helps write winning grants. Schools can match their data against the Pride Surveys national database to indicate need for grant monies, or to indicate success in their drug education programs.

Meets most of the needs of evaluation required by the U.S. Department of Education as expressed in NCLB legislation – Principles of Effectiveness. The requirement for information on: the incidence and prevalence, age of onset, perception of health risk, and perception of social disapproval of drug use and violence by youth in schools and communities. Drug use and these related behaviors are available through the use of the Pride Survey.

Also, the legislation, under the Uniform Management Information and Reporting System (UMIRS) part (C) COMPI- LATION OF STATISTICS: states the collected data shall include incident reports by school officials, anonymous student surveys, and anonymous teacher surveys. The Pride Questionnaire for Faculty & Staff and Faculty and Staff Survey reports for the past year, can be reviewed on our web site.

Allows multi-year comparisons of your data. The data is archived for 10 or more years and through our computer software the data can be compared over multiple years of administrations. The multi-year analysis allows a school, system, or state, to track the changes in data over extended periods of time by sex, race, age, grade, and many other variables.

Data belong to the customer. Local data will not be released without written permission from the customer (school official). Pride Surveys will use data to build a national sample of data for an annual release to the public. The individual school or state data is not identified in the release.

Report includes 120+ pages of tables, charts, and reports. With software developed by Pride Surveys, we create tables, charts and special reports on variables of special concern to schools and administrators. (Ex. One graph shows drug use to occur most often on the weekend when schools are not in session.)

Anonymous, voluntary, protects pupil confidentiality. By following the instruction sheet for administering the questionnaire, the students confidentiality will be protected.

Recognized by National News Media. On our website you will find print media from the Pride Survey and a press release following the Jonesboro, Arkansas shooting at a local Jr. High school.

Independent evaluators used for instrument and methodology evaluation. Independent evaluators were utilized to test for reliability and validity of the Pride Questionnaire. A copy of this evaluation can be obtained from www.pridesurveys.com under the validity hyperlink.

National database for White, African American, and Hispanic students. The only national database that is available on African American and Hispanic students. Comparison of behaviors between races may be compared to the Pride national database.

Lie detection system built into survey. When answers to questions are indicating that the student is not being honest the software will eliminate the questionnaire. Ex. If the student marks getting high when–, and then denies use of drugs, computer programs will eliminate the questionnaire from the data set.

Protection from negative or blaming reports of school administrators and teachers for student drug use. Often we hear, *"what are we going to do about the schools' drug problem"*, this statement needs to be followed with Pride Survey data which indicates drug use is more likely to occur *"at home"* than *"at school"* and drug use occurs most often on *"weekends"* and *"at night"* when school is not in session. Teachers are more likely to teach students about the harmful effects of drugs/alcohol than are parents. All students do not use drugs. This information will be available to schools that choose Pride Surveys for data collection.

**Remember to visit our website @ www.pridesurveys.com
or give us a call @ 1-800-279-6361**